

Weldclass®

BEST SELLERS



AUSTRALIAN
SINCE 1979

7 YEAR
WARRANTY*



Force 131GL Handyman Kit | 6 piece Pack

WC-131GLHK

- 130A @ 20% max output
- 4mm mild steel max MIG capacity
- Fitted with 10A 240V plug
- Promax 180 electronic helmet
- Blue gloves
- Spool of gasless 0.8mm wire
- Spare tips
- Wire brush with slag remover



Force WF-135ST Stick/TIG Welder

WF-06169

- Duty cycle: 140A @20% max output
- 3.2mm max electrode size
- Fitted with 10A 240V plug
- 2.3kg - Super compact, robust & lightweight
- Adjustable Hot Start & Arc Force
- Generator compatible
- Min 7kva, Ideal 8kva
- Promax 180 electronic helmet
- Promax blue gloves
- Promax GP welding rods 2.6mm 1kg
- Promax GP welding rods 3.2mm 1kg
- Chipping hammer
- Wire brush



Force 141GL Gasless MIG Welder

WF-06177

- 140A @ 15% max output
- 4mm steel max MIG capacity
- Fitted with 10A 240V plug
- Takes 1kg spools
- Recommended for use with 0.8/0.9mm wire
- Digital readouts
- 6kg compact, robust & lightweight
- Generator compatible
- Min 7kva, Ideal 8kva
- MIG torch BZL 15 2m
- Earth lead 2m
- Driver roller for 0.8/0.9mm gasless wire



Force 140ST Stick/TIG (Lift-Arc) Welder

WF-06170

- Duty cycle: 140A @15% max output (Stick)
- 3.2mm max electrode size
- Fitted with 10A 240V plug
- LCD digital meter
- Adjustable Hot Start & Arc Force
- Optional VRD
- 4kg - Compact, robust & lightweight
- Generator friendly
- Min 7kva, Ideal 8kva+
- Stressed-Tested - to 440V



Force 160MST MIG/Stick/TIG Welder

WF-06127

- Duty cycle: 160A @20% max output
- 6mm steel max MIG capacity
- Fitted with 10A 240V plug
- Takes 1kg or 5kg spools
- Digital readouts
- 9kg - Compact, robust & lightweight
- Generator compatible
- Min 7kva, Ideal 8kva
- MIG torch BZL 15 2.5m (direct connect)
- Earth lead 3m
- Stick lead 3m



Force 160MST Handyman Kit | 31 piece Pack

WC-160MSTHK

- Duty cycle: 160A @20% max output
- Fitted with 10A 240V plug
- Takes 1kg or 5kg spools
- Gasless wire 0.9mm 0.9kg
- Solid steel wire 0.9mm 1kg
- MIG tips
- Promax 180 helmet
- Welding gloves
- 10 x 125mm Promax thin cutting discs
- 125mm Promax flap disc
- Wire brush
- MIG pliers



Force 180ST Stick/TIG (Lift-Arc) Welder

WF-06171

- Duty cycle: 180A @18% max output (Stick)
- 4mm max electrode size
- Fitted with 15A 240V plug
- LCD digital meter
- Adjustable Hot Start & Arc Force
- Optional VRD
- 4.5kg - Compact, robust & lightweight
- Generator friendly
- Min 8kva, Ideal 10kva+
- Stressed-Tested - to 440V



Force 180MST MIG/Stick/TIG Welder

WF-06128

- Duty cycle: 180A @10% max output
- 8mm steel max MIG capacity
- Fitted with 10A 240V plug
- Takes 1kg or 5kg spools
- Digital readouts
- Robust drive system
- 9kg - Compact, robust & lightweight
- Generator compatible
- Min 8kva, Ideal 10kva
- Spool Gun ready
- MIG Torch H/Duty BZL 25 3m
- Earth Lead 3m
- Stick Lead 3m



Force 200MST MIG/Stick/TIG Welder

WF-06129

- Duty cycle: 200A @25% max output
- 10mm steel max MIG capacity
- Fitted with 15A 240V plug
- Takes 5kg or 15kg spools
- Digital readouts
- 13kg - Compact, robust & lightweight
- Inductance control
- Spool gun ready
- Generator compatible
Min 8kva, Ideal 10kva
- MIG torch H/Duty BZL 25 4m
- Earth lead H/Duty 4m
- Stick lead H/Duty 4m
- Gas regulator



Force 205MST MIG/Stick/TIG Welder

WF-06166

- Duty cycle: 200A @30% max output
- 10mm steel max MIG capacity
- Fitted with 15A 240V plug
- Takes 1kg or 5kg spools
- Digital readouts
- Power Factor Correction
- Synergic or manual controls
- 20+ Pre-set programs for different materials
- Job save, store up to 20 job settings
- Geared wire drive system
- Spool gun ready
- Generator compatible
Min 8kva, Ideal 10kva+



Force 255MST MIG/Stick/TIG Welder

WF-06167

- Duty cycle: 250A @35% max output
- 12mm steel max MIG capacity
- Fitted with 15A** 240V plug
- Power Factor Correction
- Synergic or manual controls
- 20+ Pre-set programs for different materials
- Job Save, store up to 20 job settings
- Geared 4-roll wire drive system
- Takes 5kg or 15kg spools
- Digital readouts
- Spool gun ready
- Generator compatible
Min 13kva, Ideal 15kva+



Force 290MST MIG/Stick/TIG Welder

WC-290MST

- Duty cycle: 290A @55% max output
- Fitted with heavy-duty 240V 15A plug**
- Synergic or manual MIG controls
- Job Save, store up to 20 job settings
- Geared 4-roll wire drive system
- Takes 5kg or 15kg spools
- Digital readouts
- Spool gun ready
- Generator compatible
Min 15kva, Ideal 20kva+
- MIG torch 4m BZL 36
- Earth lead 4m
- Gas regulator



Force 350MST MIG/Stick/TIG Welder

WC-350MST

- Duty cycle: 350A @60% max output
- Fitted with 3-phase 32A plug
- Synergic or manual MIG controls
- Job Save, store up to 20 job settings
- Geared 4-roll wire drive system
- Takes 5kg or 15kg spools
- Digital readouts
- Spool gun ready
- MIG Torch 4m BZL 36
- Earth Lead H/Duty 6m
- Gas Regulator
- Driver Roller for 0.9/1.2mm steel/solid wire



Force 395MST Pulse MIG/Stick/TIG Welder

WC-395MSTK1

- Duty cycle: 400A @60% max output
- Fitted with Heavy-duty interconnecting cables
- Synergic or manual MIG controls
- Additional PULSE MIG functions
- Job Save, store up to 20 job settings
- Geared 4-roll wire drive system
- Takes 5kg or 15kg spools
- Spool gun ready
- MIG Torch 4m BZL 36
- Earth Lead H/Duty 6m
- Gas Regulator
- Driver Roller for 0.9/1.2mm steel/solid wire



Force 201T TIG AC/DC Pulse Welder

WF-06172

- Duty cycle: 200A @30% max output (AC)
- 3.2mm max Tungsten size
- Fitted with 15A 240V plug
- 9kg - Compact, robust & lightweight
- LCD digital controls
- HF or Lift Arc ignition
- Pulse Frequency & width controls
- Slope Up/Down controls
- AC square wave & balance controls
- Generator compatible
Min 8kva, Ideal 10kva+
- Optional foot control
- Stressed-Tested to 440V



Force 45P PFC Plasma Cutter

CF-06176

- Duty cycle: 40A @45% max output
- 20mm Steel max recommended
- Fitted with 15A 240V plug
- 8kg - Compact, robust & lightweight
- Reliable pilot arc ignition
- Power Factor Correction
- Intelligent protection & warning system
- Generator friendly
Min 8kva, Ideal 10kva+
- Stress-tested to 440V
- Perforated plate/Expanded mesh cutting mode



Ultra 155M MIG WELDER 150A

WC-155M

- Duty cycle: 115A @15% max output
- 5mm steel max MIG capacity
- Fitted with 10A 240V plug
- Easy-to-Use Synergic MIG functions
- Inductance control
- Takes 1kg or 5kg spools
- IP23 protection
- 9kg - Compact, robust & lightweight
- Generator compatible Min 7kva, Ideal 8kva+
- Designed for hobbyist & occasional use



Ultra 175MST MIG/Stick/TIG WELDER

WC-175MST

- Duty cycle: 140A @20% max output
- 6mm steel max MIG capacity
- Fitted with 10A 240V plug
- Easy-to-Use Synergic MIG
- Euro torch connection
- Takes 1kg or 5kg spools
- 9kg - Compact, robust & lightweight
- Generator compatible Min 7kva, Ideal 8kva+
- MIG torch H/Duty BZL 25
- Earth lead 3m
- Gas regulator



Ultra 210MST MIG/Stick/TIG WELDER

WC-210MST

- Duty cycle: 180A @20% max output
- 10mm steel max MIG capacity
- Fitted with 10A 240V plug*
- Synergic or manual MIG function
- VRD function
- 2-in-1 dual input 10A/15A**
- Takes 1kg or 5kg spools
- Digital interactive display
- Generator compatible Min 7kva, Ideal 10kva+
- 10kg - Compact, robust & lightweight
- MIG torch H/Duty BZL 25 4m
- Gas regulator
- Earth lead 3m



Ultra 220MP Dual Pulse MIG/Stick/TIG WELDER

WC-220MP

- Pulse-on-Pulse (Double Pulse) MIG
- Single Pulse MIG, with easy-pulse mode for beginners
- Non-pulse MIG, with option of manual or synergic controls
- Fitted with 10A 240V plug
- Takes 5kg or 15kg spools
- Digital interactive display
- Generator compatible Min 13kva, Ideal 15kva+
- 22kg - Compact, & portable
- MIG Torch BZL 25 3m with remote +/- controls on handle
- Gas regulator
- Earth lead 4m



Ultra 250MST MIG/Stick/TIG WELDER

WC-250MST

- Duty cycle: 220A @20% max output
- 12mm steel max MIG capacity
- Fitted with 15A 240V plug*
- Synergic or manual MIG function
- VRD for safe & compliant welding
- Advanced Thermal Control technology
- 26+ MIG Programs
- Takes 5kg or 15kg spools
- LCD interactive display
- 19kg - Compact, robust & lightweight
- Generator compatible Min 7kva, Ideal 10kva+



Ultra 202T TIG AC/DC WELDER

WC-202T

- Duty cycle: 200A @24% max output
- 3.2mm max Tungsten size
- Fitted with 10A 240V plug*
- HF or Lift arc ignition
- 2-in-1 dual input 10A/15A**
- Slope Up/Down
- Pre & Post Gas
- Smart-start
- Easy pulse
- Pulse frequency & width controls
- Super-flex 8m torch
- Gas Regulator
- Earth Lead 4m



Ultra 136S STICK/ARC WELDER

WC-136S

- Duty cycle: 125A @7% max output
- 3.2mm max electrode size
- Fitted with 10A 240V plug
- Hot start & Arc force
- 72V High OCV for smooth & reliable arc
- 3kg - Compact, robust & lightweight
- Generator compatible Min 6kva, ideal 7kva
- Earth lead 3m
- Stick lead 3m



Ultra 181S STICK/ARC WELDER

WC-181S

- Duty cycle: 170A @18% max output
- 4.0mm max electrode size
- Fitted with 15A 240V plug
- Hot start & Arc force
- 72V High OCV for smooth & reliable arc
- 4kg - Compact, robust & lightweight
- Generator compatible Min 8kva, ideal 10kva
- Earth lead 4m
- Stick lead 4m



Ultra 41PA Plasma Cutter & Air Comp

WC-41PA

- Built-in Air Compressor
- Duty cycle: 35A @30% max output
- 16mm steel max recommended
- Fitted with 15A 240V plug
- High quality plasma torch
- Reliable Pilot Arc Ignition
- Cuts all metals; Steel, SS, Alu, Gal etc.
- 16kg - Compact, robust & lightweight
- Rugged roll-frame design
- Generator friendly
Min 8kva, Ideal 10kva+
- Plasma torch 6m
- Earth lead 3m



Ultra 43P Plasma Cutter 40A

WC-43P

- Duty cycle: 35A @30% max output
- 16mm steel max recommended
- Fitted with 15A 240V plug
- High quality plasma torch
- Reliable Pilot Arc Ignition
- Worn consumables alert system
- Cuts all metals; Steel, SS, Alu, Gal etc.
- 7kg - Compact, robust & lightweight
- Rugged roll-frame design
- Generator friendly
Min 8kva, Ideal 10kva+
- Plasma torch 6m
- Earth lead 3m



T100 Welding Trolley

WC-06235

- Robust construction, 1.6mm material
- Double gas bottle chains
- Large top tray; suits most portable machines including MIGs up to 250 Amp
- Wheels mounted wider than frame for added stability



Promax 180 Electronic Welding Helmet

WC-05311

- Exceptional value
- Light weight & comfortable
- Magnification lens holder
- Ideal for Occasional MIG & Stick Welding
- Functions: Variable Shade 9-13, Sensitivity & Delay Adjustments
- Ultra clear vision - Optical rating 1/1/1/2
- Viewing area: 96 x 39mm
- Magnification lens holder



Promax 350 Electronic Welding Helmet

WC-05313

- Generous 100 x 53mm viewing area
- Four Arc Sensors for reliable arc detection and switching
- Ideal for MIG and Stick welding, also suits TIG applications down to 30 amps
- Suitable for light to medium fabrication, rural and maintenance work
- Variable shade (9 - 13) and Grind Mode switch
- Sensitivity and delay adjustments
- High impact tested and rated to AS1337.1



Promax 350 Electronic Welding Helmet

WC-05314

- Generous 100 x 53mm viewing area
- Four Arc Sensors for reliable arc detection and switching
- Ideal for MIG and Stick welding, also suits TIG applications down to 30 amps
- Suitable for light to medium fabrication, rural and maintenance work
- Variable shade (9 - 13) and Grind Mode switch
- Sensitivity and delay adjustments
- High impact tested and rated to AS1337.1



Promax 500 Electronic Welding Helmet

WC-05317

- Large 98 x 87mm viewing area
- Ultra-clear vision
- Four Arc Sensors for reliable arc detection and switching
- Ideal for MIG, TIG and Stick welding
- For professional and industrial applications
- Dual Shade Range (5 - 8 and 9 - 13)
- Grind-Mode switch locks the lens in light shade
- Sensitivity and delay adjustments



Promax 500 Electronic Welding Helmet

WC-05318

WELDWOLF

- Large 98 x 87mm viewing area
- Ultra-clear vision
- Four Arc Sensors for reliable arc detection and switching
- Ideal for MIG, TIG and Stick welding
- For professional and industrial applications
- Dual Shade Range (5 – 8 and 9 – 13)
- Grind-Mode switch locks the lens in light shade
- Sensitivity and delay adjustments



Promax 650 Electronic Welding Helmet

WC-05343

- Super-Size 89cm² viewing area
- 'Landscape' 108mm wide x 82mm high window/screen format
- Ultra-Crisp V1 (1/1/1/1) rated optics with enhanced colour recognition
- Advanced digital controls with memory, cut mode, gradient & other functions
- External grind button for instant & easy switching between welding & grind modes
- Super-comfortable, wrap-a-round headgear with moulded rear pressure pad



Jackson WH70 GDS & Airmax Elite Electronic Welding Helmet

- Superior European quality, reliability and design
- For serious professional and industrial applications
- Auto-darkening technology world-first 1/1/1/1 optical rating
- Suitable for MIG, TIG, Stick welding, Oxy and Plasma cutting
- AS1716 rated (respiratory system)
- AS1337.1 rated (high-impact helmet)
- AS1338.1 rated (lens)
- Hard hat kit available separately



Hard Hat with Adaptor Kit

Flip Front Welding Helmet

7-FFH

- Complies with AS1337 (medium impact)
- Fully Assembled
- Takes Standard 108x51mm Lenses



Product Code	Description
KC-J5225/K	WH70 GDS & Airmax Elite Welding Helmet
KC-J5234/K	Hard Hat with Adaptor Kit - suit WH70 GDS

CLEAR COVER LENSES FOR WELDING HELMETS

WE DO EVERYONE'S LENSES !

Find the right Clear Cover Lens for you welding helmet fast !

See Reference Chart at weldclass.com.au/lens-search



Promax HV5 Fire Retardant Welding Jacket

- Comfortable, lightweight and cool
- 100% cotton specially treated for flame resistance
- Flame retardant stitching
- Wide hook and loop tape closure, no studs
- Pen pocket and internal pocket
- Machine washable
- Hi-vis orange



Product Code	Size	Product Code	Size
WC-05261	Medium	WC-05263	X-Large
WC-05262	Large	WC-05264	2X-Large

Promax BL7 Leather Welding Jacket

- Premium cowhide leather
- Special design offers reduced weight and superior comfort
- Sewn with Kevlar Heat-Resistant thread
- Adjustable cuffs and collar
- Extended back offers better protection of the lower back when bending, kneeling, etc
- Kevlar stitching and fully welted seams for longer seam and garment life



Product Code	Size	Product Code	Size
WC-01782	Medium	WC-01783	X-Large
WC-01781	Large	WC-01784	2X-Large

Promax Blue Flame FR Welding Jacket

- Lighter and cooler than leather
- 100% cotton specially treated for flame resistance
- Flame retardant stitching
- Wide hook and loop tape closure, no studs
- Pen pocket and internal pocket
- Adjustable cuffs and waist straps
- Machine Washable
- Blue/black



Product Code	Size	Product Code	Size
WC-01797	Medium	WC-01799	X-Large
WC-01798	Large	WC-01800	2X-Large

Promax FR Welding Jacket with Leather Sleeves

- 100% cotton specially treated for flame resistance
- Top quality cowhide leather sleeves
- Kevlar stitching with rivets at stress points to prevent seam failure
- Wide hook and loop tape closure, no studs
- Satin lined shoulders and arms
- Pockets and pen holders



Product Code	Size	Product Code	Size
WC-04653	Medium	WC-04656	2X-Large
WC-04658	Large	WC-04657	3X-Large
WC-04655	X-Large	-	-

Promax Blue Welding Gloves

- Crafted for a superior, comfortable fit
- Premium cowhide reinforced and sewn with Kevlar thread
- Reinforced knuckle, palm and thumb for added durability
- Selected heavy-duty leather for long life
- Fully lined



Product Code	Description
WC-01775	Standard Pair
WC-01777	Left-Hand Pair

Promax Blue FR Hood for Welding Helmet

WC-05456

- Blocks out annoying sunlight & reflections from behind the helmet
- Protects head, neck and ears from spatter, debris, sun-burn, etc
- Fast and easy to fit to your welding helmet - Supplied with self-stick hook & loop



Fits to any helmet!

Promax HV2 Hi-Vis FR Welding Jacket & Harness Flap

- Hi-Vis material for day/night use
- 100% flame resistant including reflective tape
- Harness compatible with rear opening flap
- Top quality cowhide leather sleeves
- Kevlar stitching with rivets at stress points to prevent seam failure
- Wide hook and loop tape closure, no studs



Product Code	Size	Product Code	Size
WC-04762	Medium	WC-04765	2X-Large
WC-04763	Large	WC-04766	3X-Large
WC-04764	X-Large	WC-04766	4X-Large

Promax FR Welding Hoods

- Lightweight and cool flame resistant cotton
- Hook and loop opening chin to chest for easier wear and removal
- Kevlar heat-resistant stitching to prevent seam failure
- Drawstring face closure for snug fit



Product Code	Colour
WC-01795	Blue
WC-03772	Hi-Vis Orange

Platinum TG-21 TIG Welding Gloves

WC-04676

- Super-soft grain leather for excellent feel
- Sewn with Kevlar thread to prevent seam failure
- Excellent dexterity and comfort combined with good heat resistance
- Designed to comfortably fit most hand sizes
- Length: 360mm (14")



Promax Blue FR Leather Apron

WC-01753

- Premium Leather: Top quality split cowhide leather
- Riveted Stress Points & Double-Stitched with Kevlar: Longer garment life in tough conditions
- Utility Pocket: For tools, rulers, markers etc
- Chest to Knee Protection: 900mm long
- Does not shed fibres like standard grey/chrome leather
- Adjustable Webbing Straps



Promax Blue Leather Spats Hook & Loop Fastening

WC-01816

- Leather spatts protect your boots and feet from spatter
- Premium cowsplit leather
- Sewn with Kevlar thread
- Height 340mm
- Side stiffeners
- Suitable for general purpose heat, flame and spark protection.



Promax Blue FR Leather Sleeves

WC-05375

- Elasticised ends for easy fitting
- No ties or straps
- Combination leather & FR cotton: Durable, yet light weight and cool



Oxy Cutting & Brazing Kits 'Platinum' Series

- 2 x Regulators – Oxygen and LPG/Acetylene
- 1 x Blowpipe handle
- 1 x Cutting attachment
- 1 x Brazing mixer
- 3 x Brazing tips
- 3 x Cutting tips
- 1 x 10m hose set
- 1 x Tip cleaners
- 1 x Flint lighter
- 1 x Combination circle/roller guide
- 1 x Shade 5 Oxy goggles
- 1 x Multi-purpose spanner
- 4 x Flashback arrestors



Product Code	Description
4-0XACK	Oxy/Acetylene Kit
4-0XLPK	Oxy/LPG Kit

RE4 (Rare-Earth) AC/DC TIG Tungstens

- All metal tungsten
- Suitable for DC (steel and stainless) and AC (aluminium)
- No radioactive elements
- Reliable arc striking with a smooth and stable arc
- Maintains tip geometry
- Low burn off rate
- Purple tip
- 10 per pack



Product Code	Description
WC-05192	1.6mm
WC-05193	2.4mm
WC-05194	3.2mm

Platinum GL-11 Gasless Wire

- Rated by thousands of Aussie fabricators as Australia's No.1 gasless welding wire
- Ultra-smooth arc with minimal splatter
- All-positional capabilities
- Suitable for single and multi-pass welds
- Vacuum foil sealed spool for exceptional storage life



Product Code	Description
2-088FM	0.8mm 4.5kg Spool
2-098FM	0.9mm 4.5kg Spool
2-128FM	1.2mm 4.5kg Spool
2-GWS1115/09	0.9mm 15kg Spool
2-GWS1115/12	1.2mm 15kg Spool

Gasless Wire Mini-Spools

- Easy to use even on steel that is slightly rusty or dirty
- All positional wire, for general purpose use on mild and galvanised steel
- Industrial grade E71T-11
- Suitable for single or multi-pass



Product Code	Description
P2-084FM	100mm/0.9kg Spool 0.8mm
P2-094FM	100mm/0.9kg Spool 0.9mm

Platinum XT6 MIG Steel Wire

- For welding a wide range of mild and mid strength low carbon steels and galvanised steel
- Used with argon or CO2 based gas mixtures
- All positional including vertical down
- AWS Classification AWS A5.18 ER70S-6



Product Code	Description
2-XMS608/08	200mm/5kg Spool 0.8mm
2-XMS608/09	200mm/5kg Spool 0.9mm

MIG Steel Mini-Spools Wire

- Low spatter with good edge wetting and weld shape
- Premium S6 grade, copper coated low carbon steel mig wire for welding a wide range of mild and mid strength steels
- Use with argon mixed gas or CO2
- AWS Classification AWS A5.18 ER70S-6



Product Code	Description
P2-084MW	100mm/1.0kg Spool 0.8mm
P2-094MW	100mm/1.0kg Spool 0.9mm

Platinum 12V (General Purpose) Steel

- Excellent Operator Appeal: Very smooth & stable arc, easy striking, low spatter, self-detaching / easy-to-remove slag
- User Friendly: Tolerant to dirty / rusty steel & poor fit up
- All-Positional: Fast-freezing slag for fillet & butt welding in all positions, including vertical down
- AWS specification A5.1 E6013 / AS/NZS Specification 1553.1 E4112-0



Product Code	Description
2-E12V/26	2.6mm 2.5kg
2-E12V/32	3.2mm 5kg

Platinum 316L Stainless-Steel

- Welding of matching 316, 316L and common "300 series" stainless steels, including; 301, 302, 304, 304L, 3Cr12 etc.
- Good resistance to pitting, acids and general corrosion.
- Heavy-Duty re-usable plastic packet
- All position, except V-down
- AWS E316L-16



Product Code	Description
WC-06453	2.0mm 1kg Re-usable Pack
WC-06454	2.6mm 1kg Re-usable Pack
WC-06455	3.2mm 1kg Re-usable Pack

Platinum 312 Universal

- High strength welding of almost any type of steel. Ideal for; Unknown steels, Dissimilar steels (eg steel to stainless), Die or tool steel, etc.
- Also used as a buffer layer prior to hardfacing etc.
- Heavy-Duty re-usable plastic packet
- All position, except V-down
- AWS E312-16



Product Code	Description
WC-06294	2.6mm 1kg Re-usable Pack
WC-06295	3.2mm 1kg Re-usable Pack

Promax 700 Hardfacing

- General purpose hardfacing of ground-engaging implements and similar applications, including; augers, pints, tynes, blades and parts subject to fatigue or flexing
- Typical hardness 53-56 HRC (1st layer)
- Heavy-Duty re-usable plastic packet
- Horizontal & flat positions only
- For longer service life against abrasion, use Platinum 943 electrodes



Product Code	Description
WC-06444	3.2mm 1kg Re-usable Pack

Platinum 12V (General Purpose) Steel

- General purpose welding of mild & galvanised steel.
- Smooth arc, easy re-striking & self-releasing slag.
- Fast-freezing slag for welding in all positions – including vertical down.
- Heavy-Duty re-usable plastic packet
- All positional
- AWS E6013 / AS:E4112



Product Code	Description
WC-06296	2.0mm 1kg Re-usable Pack
WC-06297	2.6mm 1kg Re-usable Pack
WC-06298	3.2mm 1kg Re-usable Pack

Platinum 309MoL Stainless-Steel

- Welding of Stainless to mild or low alloy steels, matching 309 & 309L stainless, CrNi & CrNiMo stainless & hard to weld steels
- Also used for cladding & buffer layers
- Strong, tough & corrosion resistant
- Heavy-Duty re-usable plastic packet
- All position, except V-down
- AWS E309MoL-16



Product Code	Description
WC-06446	2.6mm 1kg Re-usable Pack
WC-06447	3.2mm 1kg Re-usable Pack

Platinum NiFe Cast Iron

- High strength welding of; cast iron (incl. grey / malleable, nodular & SG iron) & cast iron to steel
- Heavy-Duty re-usable plastic packet
- Horizontal & flat positions only
- AWS ENiFe-CI



Product Code	Description
WC-06299	3.2mm 1kg Re-usable Pack

Platinum 943 Hardfacing

- High-performance hard-facing, for longer service life. Offers both exceptional abrasion resistance & moderate-to-heavy impact strength.
- Applications include bucket lips, screws, hammers, teeth, etc.
- Typical hardness 60-65 HRC (1st layer)
- Heavy-Duty re-usable plastic packet
- Horizontal & flat positions only



Product Code	Description
WC-06445	3.2mm 1kg Re-usable Pack

Filler Rod - Steel S6

- For general TIG welding or oxy/acetylene fusion welding of mild steels
- AWS Classification A5.18 ER70S-6



Product Code	Description
WC-03782	1.6mm - 1.0kg Handy Pack
WC-03783	2.4mm - 1.0kg Handy Pack

Filler Rod - Stainless Steel 316L

- For TIG welding common 300 series stainless steels, such as 301, 302, 304, 304L, 316, 316L also 409, 444 and 3cr12.
- AWS Classification A5.9 ER 316L



Product Code	Description
WC-02373	1.6mm - 1.0kg Handy Pack
WC-02452	2.4mm - 1.0kg Handy Pack

Filler Rod - Aluminium 5356

- For a wide range of aluminium alloys, general aluminium fabrication and repair
- 5% Magnesium content
- AWS Classification A5.10 ER 5356



Product Code	Description
WC-01535	1.6mm - 0.5kg Handy Pack
WC-02308	2.4mm - 0.5kg Handy Pack
WC-02309	3.2mm - 0.5kg Handy Pack

Brazing Rod - Silver 2%

- Joining copper to copper - can be used without flux, due to phosphorous content
- Joining copper to low zinc brass - flux required
- Popular for copper pipe, plumbing fittings, hot water tanks
- Economical



Product Code	Description
WC-06357	2.4mm Bare - Handy Pack - 5 Rods

Brazing Rod - Silver 15%

- Joining copper to copper - can be used without flux, due to phosphorous content
- Joining copper to brass - flux required
- Commonly used in plumbing & HVAC applications; copper pipe, hot water tanks, etc
- Suitable for gap filling



Product Code	Description
WC-06078	2.4mm Bare - Handy Pack - 5 Rods

Brazing Rod - Silver 45%

- General purpose low temperature brazing
- High strength joining of steel, stainless, copper, brass, etc



Product Code	Description
WC-00209	1.6mm Bare - 0.5kg Pack
WC-00210	1.6mm Flux Coated - 0.5kg Pack

Brazing Rod - Manganese Bronze

- For steel, cast iron, malleable iron, copper, copper alloys
- Not suitable for hot or salt water pipes



Product Code	Description
P2-FRMB24B/10	2.4mm Bare - 10 Rods
P2-FRMB24F/10	2.4mm Flux Coated - 10 Rods
P2-FRMB32B/10	3.2mm Bare - 10 Rods
P2-FRMB32F/10	3.2mm Flux Coated - 10 Rods

Brazing Rod - Nickel Bronze

- High strength & good wear resistance
- For steel, cast iron, copper, copper alloys, etc
- Popular for build up of worn components, e.g. gear teeth



Product Code	Description
P2-FRNS24F/10	2.4mm Flux Coated - 10 Rods
P2-FRNS32F/8	3.2mm Flux Coated - 8 Rods

Contour Wrap-A-Round Pipe Measure

- Inexpensive tool for marking straight lines around pipe
- Doubles as a straight edge
- Printed with scale, pitch and tangent charts
- Withstands temperatures up to 180°C
- Pipe capacity is listed for single wrap – double wrap is recommended for 100% accuracy



Product Code	Description	Size	Pipe Capacity
KC-J1858	164B Medium	1,220(l) x 100(w)mm	320mm
KC-J1859	176B Large	1,830(l) x 100(w)mm	480mm
KC-J1860	177B X-Large	2,130(l) x 125(w)mm	560mm
KC-J1861	179B 2X-Large	2,740(l) x 125(w)mm	720mm

Contour Pipe Centering Heads

- Set centrelines, establish angles and marks for butt-ins, locate points inside pipes and tanks, lay out keyways and measure declivity
- Find top or bottom dead centre on pipe
- Find location of other ordinate lines on the sides or at different angles
- Y-type head and adjustable dial bubble protractor
- Aluminium with a hardened steel pin



Standard #6 Centering Head:

- Manually operated centering pin

Jumbo #7 Centering Head:

- Spring loaded and trigger operated centering pin

Product Code	Description	Head	Min Pipe Capacity
KC-J1879	Standard #6 Centering Head	100mm	12mm
KC-J1880	Jumbo #7 Centering Head	200mm	25mm

Promax FHD F-Clamps

- Nickel-Chrome Plated, Heat-Treated Steel: For a corrosion-resistant, high strength clamp
- Oxide-Coated Spindle: For extra weld spatter resistance
- Threaded Stopper: Allows arm removal for clamping in confined spaces or over larger objects



Product Code	Description
WC-01870	100mm x 80mm
WC-01871	200mm x 80mm
WC-01872	300mm x 120mm
WC-01873	400mm x 180mm
WC-01874	500mm x 120mm

Twist Lock Electrode Holder

6-TW400

- Industrial quality suitable for stick welders and lead sets
- Twist lock style
- 400amp



MIG Torch Teflon Liners

- Carbon-teflon for longer life and smoother wire feeding
- Suit almost any MIG torch
- For aluminium wire

Universal Liners:

- Suits torches up to 5m long
- Supplied with fittings to suit all common torch connections

Long Liners:

- Suits torches up to 10m long
- Suits Euro style connections
- Supplied with brass neck liner



Product Code	Description	Wire Capacity
P3-CTUL09	Universal Liner	0.9, 1.0 & 1.2mm
P3-CTUL12	Universal Liner	1.2 & 1.6mm
P3-CTL12/11	Long Liner	1.2 & 1.6mm

Cable Joiners – 500amp

- Compatible with other common brands
- Precision machined brass for reliable connections
- Perish-resistant rubber cover
- Tapered twist-lock style
- Available in standard and 95mm model
- Sold in pairs – 1 x male, 1 x female



Product Code	Description	Cable Capacity
WC-01499	Cable Joiner Set – Red	70mm ²
WC-01867	Cable Joiner Set – Black	50 – 95mm ²

Regulators - Platinum Series

- Heavy Duty Platinum Series
- Solid brass body and bonnet
- 12 month warranty
- Spare parts available
- User friendly colour coded gauges



4-AR1 - Argon
• For MIG or TIG use
• 0-28 L/min flow rate



4-ACR1 - Acetylene
• 0-150 Kpa output



4-OXR1 - Oxygen
• 0-1,000 Kpa output



LPR1 - LPG
• 0-300 KPa output
• For cutting, heating and brazing

Flashback Arrestors - Platinum Series

- Conform to AS4603-1999
- Individually flashback, flow & leak tested
- Certified to EN730
- Thermal cut off valve for protection against sustained flashback (on Regulator-end Models)

Product Code	For	Gas
P4-FBARF2	Regulator	Acetylene / LPG
P4-FBARO2	Regulator	Oxygen
P4-FBATF	Torch	Acetylene / LPG
P4-FBATO	Torch	Oxygen



Conforms to AS4603, independently certified

Quick Couplings For Oxy Gear

- Allows equipment to be quickly and safely dismantled/assembled
- Fast change between hoses and different torches
- Complies with ISO7289 / EN561 Standards
- Automatically shuts off when disconnected
- Use for Oxy, Acetylene, LPG, MIG and TIG gas

Product Code	Description	For	Gas
P4-RQCF	Coupler Set	Regulator	Acetylene / LPG
P4-RQCO	Coupler Set	Regulator	Oxygen / Argon
P4-TQCF	Coupler Set	Torch	Acetylene / LPG
P4-TQCO	Coupler Set	Torch	Oxygen / Argon
P4-RQPF	Pin Only	Regulator	Acetylene / LPG
P4-RQPO	Pin Only	Regulator	Oxygen / Argon



Regulator Mount



Torch Mount

Blowpipe Handle - Platinum Series

P4-BP

- Heavy Duty Platinum Series
- Proven quality, robust long-life design
- Dual-Stage valves for quick and precise adjustment from fine work through to heavy cutting and heating
- Superior valve design with tension system to prevent accidental adjustment
- Suitable for Oxygen/LPG and Oxygen/Acetylene gases
- Fits to Cutting Attachment (Part no P4-CA) or Brazing/Heating Mixers



Cutting Attachment - Platinum Series

P4-CA

- Heavy Duty Platinum Series
- Proven quality, robust long-life design
- Dual-Stage valves for quick and precise adjustment from fine work through to heavy cutting and heating
- Superior valve design with tension system to prevent accidental adjustment
- Suitable for Oxygen/LPG and Oxygen/Acetylene gases
- Fits to common blowpipe handle (part no. P4-BP)
- Takes standard Type 41 (Oxy/Acetylene) or Type 44 (Oxy/LPG) style cutting & gouging tips



Platinum LT40 LPG Burner Kits

Handyflame Kit

WC-02988

- Output up to 390mj/hr, torch length 600mm, operates on full bottle pressure
- Handle + 400mm Tube
- Ø50mm Tip
- 2.5m Hose
- Cylinder Adaptor



Maxflame Kit

WC-02989

- Output up to 500mj/hr, torch length 1m, ideal where maximum flame size/power is required, operates on full bottle pressure
- Handle + 750mm Tube
- Ø65mm Tip
- 3m Hose
- Cylinder Adaptor



Combo Kit

WC-02991

- Output up to 390mj/hr, torch length 600/1000mm, the "all in one kit", regulator reduces gas consumption & allows more precise flame control
- Handle + 400/750mm Tubes
- Ø50/65mm Tips
- 5m Hose
- Regulator



Cutting Tips - T41 Oxy/Acetylene

- Proven consistent quality, long-life design
- Standard Shape - Fits common Roller/ Circle Guides
- Fits to standard cutting attachment (P4-CA)
- Use with Oxygen/Acetylene



Product Code	Description
P4-T416	Size 6 (1-6mm)
P4-T418	Size 8 (6-10mm)
P4-T4112	Size 12 (10-20mm)
P4-T4115	Size 15 (20-75mm)
P4-T4120	Size 20 (75-125mm)
P4-T4124	Size 24 (125-200mm)

Cutting Tips - T51 Oxy/Acetylene '3-Seat'

- 3 seat design suits most straight line and profile cutting machine torches and some one piece hand held cutting torches. Use with Oxygen/Acetylene



Product Code	Description
P4-T510	Size 0 (5-10mm)
P4-T5100	Size 00 (0-5mm)
P4-T511	Size 1 (10-15mm)
P4-T512	Size 2 (15-30mm)
P4-T513	Size 3 (30-40mm)
P4-T514	Size 4 (40-50mm)
P4-T515	Size 5 (50-100mm)
P4-T516	Size 6 (100-150mm)
P4-T517	Size 7 (150-250mm)
P4-T518	Size 8 (250-350mm)

Flint Lighters

- Quality flint lighters and flint renewals
- For quick and easy ignition of oxygen/fuel gas cutting and welding torches
- Flints are replaceable

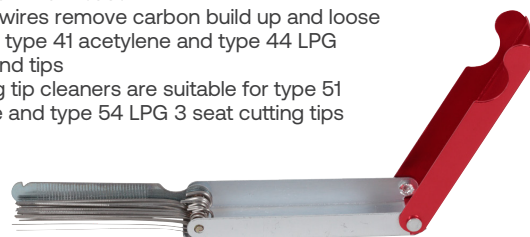


Product Code	Description
P4-SFL	Single Flint Lighter
P4-SFR	Single Flint Replacements Pk10

Tip Cleaners

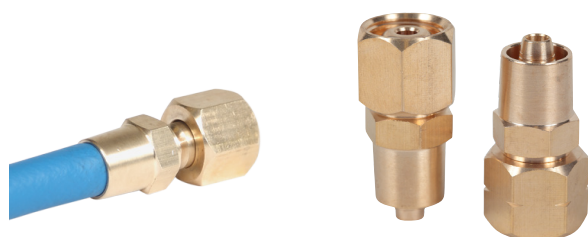
P4-TC

- Standard 100mm (Closed)
- Quality standard and extra long tip cleaners
- Strong aluminium case
- Abrasive wires remove carbon build up and loose slag from type 41 acetylene and type 44 LPG nozzles and tips
- Extra long tip cleaners are suitable for type 51 acetylene and type 54 LPG 3 seat cutting tips



Hose Connectors - Screw-On

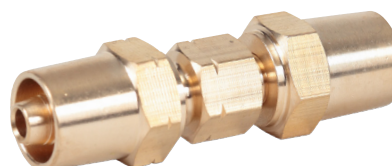
- Brass screw type hose connector suitable for 5mm I.D. hose



Product Code	Description
4-LP112	Suit 5mm I.D. Hose - RH Oxy/Argon
4-LP240	Suit 5mm I.D. Hose - LH Acet/LPG

Hose Joiners - Screw-On

- Brass screw type hose joiner suitable for joining 5mm I.D. hose



Product Code	Description
4-LP265	Suit 5mm I.D. Hose

Hose Couplers

- For joining and connecting hose and hose sets



Product Code	Description
4-WB34	RH Oxy/Argon
4-WB35	LH Acet/LPG

Engineers Chalk

- Resists breakage & powdering
 - No wasting time with chalk that doesn't perform
- Consistently Top Quality - Expect the same quality every time
- Cost effective Non-permanent marking



Seriously snap-resistant!

Product Code	Description
6-EC7510	75 x 10 x 10mm Square -50 pcs/box
6-EC755	75 x 10 x 5mm Split -100 pcs/box
6-EC125	125 x 12 x 5mm Split -144 pcs/box (suit dispenser)

Earth Lead Sets - 200A

WC-06230

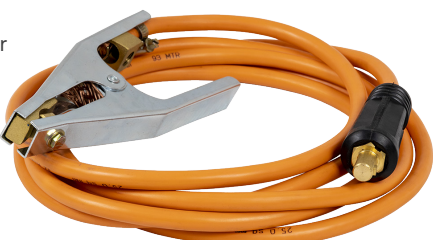
- 200A Earth Lead
- 4m x 16mm² cable with std 10-25/9mm connector
- Suit welding machines up to 200 amps



Earth Lead Sets - 280A

WC-06232

- 280A Earth Lead
- 4m x 25mm² cable with Large 35-50/13mm connector
- Suit welding machines up to 280 amps



Y-Pieces

- For splitting gas supply from one line into two



Product Code	Description
4-R121	RH Oxy/Argon

Chalk Dispenser

- Dispenser / Holder for 125mm chalk
- Retractable action & pocket clip
- Metal design prevents chalk breakage
- Suitable for 125x12x5mm Engineers chalk



Product Code	Description
P6-ECD	Suits 6-EC125 Chalk

Electrode Holder Work Lead Sets - 200A

WC-06231

- 200A Electrode Holder Work Lead
- 4m x 16mm² cable with std 10-25/9mm connector
- Suit welding machines up to 200 amps



Electrode Holder Work Lead Sets - 280A

WC-06231

- 280A Electrode Holder Work Lead
- 4m x 25mm² cable with Large 35-50/13mm connector
- Suit welding machines up to 280 amps



Earth Clamps - Standard

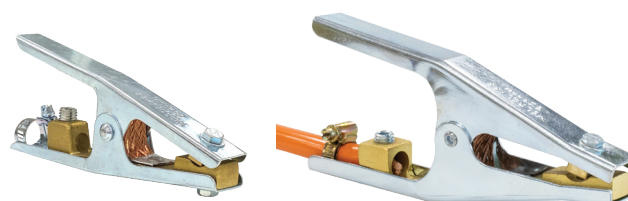
- Weldclass standard series alligator-style earth / ground clamps
- Copper braided shunt for improved conductivity
- Suitable for MIG/STCK/TIG Welders



Product Code	Description
P6-EC200	200 Amp
P6-EC300	300 Amp
P6-EC500	500 Amp

Earth Clamps - Heavy Duty - Direct Fit Style

- Platinum series direct fit earth clamps
- No cable lug required
- Robust heavy-duty build for extended service life

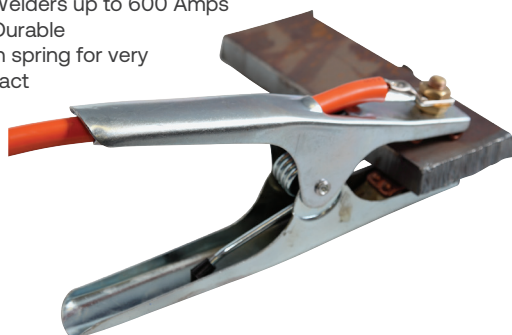


Product Code	Description
WC-01647	Platinum EC200H - Up to 250A-300A
P6-EC500H	Platinum EC500H - Up to 500A-600A

Earth Clamp - Heavy Duty 600A

WC-01532

- All types of Welders up to 600 Amps
- Robust and Durable
- High strength spring for very positive contact



Promax MG12 Mini Magnets

- Low profile, height 60mm
- Ideal for holding work pieces at multiple points
- Max pull force of approx 12kg*
- Aluminium clad enclosure for easy cleaning



Product Code	Description
WC-01875	2-Pack
WC-01876	6-Pack

Promax MG20 Series - On/Off Magnets

- On-off switch allows fast and safe positioning and removal
- Turn magnet Off or at the mid-point when setting up, turn On when in final position
- Ideal for flat, round and square steel profiles
- Easy to clean, simply turn off and wipe



Product Code	Description
WC-01885	MG22 110x95x25mm 90/45°, max pull force approx 35-40kg*
WC-01886	Promax MG26 150x130x35mm 90°, 45° & 60/30° Multi-Angle, max pull force approx 65-70kg*

Magnetic Square - Red Arrow

P6-AMH4

- Magnetic welders square with 90dg & 45dg holding positions
- To assist Positioning of metal plates, brackets, etc when welding
- Approx size (width across flat at base of arrow): 4in: 95mm / 5in: 125mm



Nozzle Dip Gel

WC-06465

- Prevents spatter adhesion and build-up on MIG welding torch nozzle & front-end parts
- Advanced gel formula
- Metal Tin won't burn/melt
- Non toxic



Anti-Spatter Spray

WC-06096

- 500ml Bottle with Trigger Pump
- Made in Australia
- Paintable - contains no silicone
- Non-Toxic & Non-Flammable
- Contains Anti-Rust agents
- Bulk fluid (5L & 20L) is ready to use, and/or can be diluted 1:1 with water if preferred.
- Eco Friendly



MIG Pliers

P6-MPLY

- Multipurpose plier ideal for use when MIG welding
- 4 in 1: Wire cutting, nozzle and tip removal, nozzle cleaning & light hammering



Chipping Hammers

6-SHCH

- Spring handle
- Hardened steel head



Promax Leather Welding Blanket

- For protection grinding sparks, light to medium spatter and indirect heat
- Heavy duty split cowhide leather
- Heat resistant Kevlar stitching to prevent seam failure
- With eyelets

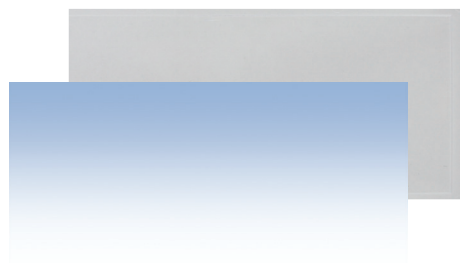


Product Code	Size
8-LWB1818	1.8 x 1.8m
8-LWB2	2.0 x 2.0m
8-LWB3	3.0 x 3.0m

Clear Lenses for Standard Flip-Front Helmets

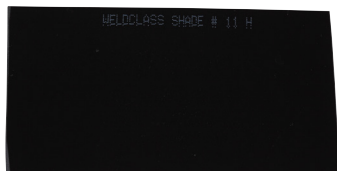
WC-01636

- Suits most common flip-front helmets
- Size 108 x 51mm – suits most standard flip-front helmets
- 7-CL39 'CR39 Style' spatter resistant



Shade Lenses

- Size 108 x 51mm – suits most standard flip-front helmets
- Quality replacement glass shade lenses
- Compliant to Australian standards 1338.1



Product Code	Description
7-SL9	Shade 9
7-SL10	Shade 10
7-SL11	Shade 11
7-SL12	Shade 12

Binzel Style MIG Torches & Parts

- Common Binzel style MIG torches and parts
- Contact ATOM for full range of torches and accessories



Product Code	Description
Promax BZL Torches	
WC-03610	BZL 15 Torch With Euro Fitting – 4m
WC-03612	BZL 24 Torch With Euro Fitting – 4m
WC-03615	BZL 25 Torch With Euro Fitting – 4m
WC-03618	BZL 36 Torch With Euro Fitting – 4m
Nozzles – 2 Per Pack	
P3-B15N	BZL 15 Conical Nozzle – 12mm
P3-B24N	BZL 24 Conical Nozzle – 12.5mm
P3-B25N	BZL 25 Conical Nozzle – 15mm
P3-B36N	BZL 36 Conical Nozzle – 16mm
P3-B36NC	BZL 36 Cylindrical Nozzle – 19mm
BZL Necks	
P3-B15FN	BZL 15 Flexible Neck
P3-B15SN	BZL 15 Standard Neck
P3-B24SN	BZL 24 Standard Neck
P3-B25SN	BZL 25 Standard Neck
P3-B36SN	BZL 36 Standard Neck
Gas Diffusers & Tip Holders – 2 Per Pack	
P3-B15TH	BZL 15 Gas Diffuser/Tip Holder – For M6 Tips
P3-B24GD	BZL 24 Gas Diffuser – White
P3-B24TH	BZL 24 Tip Holder – For M6 Tips
P3-B25TH	BZL 25 Tip Holder – For M6 Tips
P3-B36GD	BZL 36 Gas Diffuser – White
P3-B36TH6	BZL 36 Tip Holder – For M6 Tips
P3-B36TH8	BZL 36 Tip Holder – For M8 Tips
BZL Liners	
P3-BRSL3	BZL Liner For 0.9 to 1.2mm, Red – 3m
P3-BRSL4	BZL Liner For 0.9 to 1.2mm, Red – 4m
P3-BRSL5	BZL Liner For 0.9 to 1.2mm, Red – 5m
P3-BYSL4	BZL Liner For 1.2 to 1.6mm, Yellow – 4m
P3-BYSL5	BZL Liner For 1.2 to 1.6mm, Yellow – 5m
Contact Tips – 5 Per Pack	
P3-BT6066	BZL Contact Tips 6 x 6mm – 0.6mm
P3-BT6086	BZL Contact Tips 6 x 6mm – 0.8mm
P3-BT6096	BZL Contact Tips 6 x 6mm – 0.9mm
P3-BT609	BZL Contact Tips 6 x 8mm – 0.9mm
P3-BT610	BZL Contact Tips 6 x 8mm – 1.0mm
P3-BT612	BZL Contact Tips 6 x 8mm – 1.2mm
P3-BT616	BZL Contact Tips 6 x 8mm – 1.6mm
P3-BT809	BZL Contact Tips 8 x 10mm – 0.9mm
P3-BT810	BZL Contact Tips 8 x 10mm – 1.0mm
P3-BT812	BZL Contact Tips 8 x 10mm – 1.2mm
P3-BT816	BZL Contact Tips 8 x 10mm – 1.6mm
P3-BTA609	BZL Contact Tips, Alu/Flux Core 6 x 8mm – 0.9mm
P3-BTA610	BZL Contact Tips, Alu/Flux Core 6 x 8mm – 1.0mm
P3-BTA612	BZL Contact Tips, Alu/Flux Core 6 x 8mm – 1.2mm

Bernard Style MIG Torches & Parts

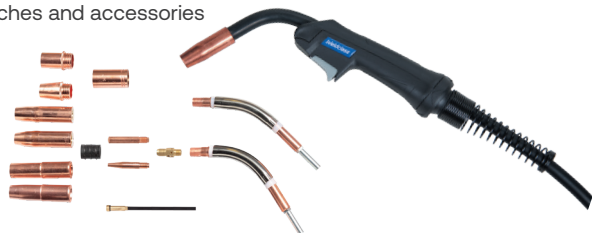
- Common Bernard style MIG torches and parts
- Contact ATOM for full range of torches and accessories



Product Code	Description
Torches	
3-MTBN3B/12	BND 300 Torch With EZ/QD Fitting – 3.6m
3-MTBN3B/15	BND 300 Torch With EZ/QD Fitting – 4.6m
3-MTBN3E/12	BND 300 Torch With Euro Fitting – 3.6m
3-MTBN3E/15	BND 300 Torch With Euro Fitting – 4.6m
3-MTBN4B/12	BND 400 Torch With EZ/QD Fitting – 3.6m
3-MTBN4B/15	BND 400 Torch With EZ/QD Fitting – 4.6m
3-MTBN4E/12	BND 400 Torch With Euro Fitting – 3.6m
3-MTBN4E/15	BND 400 Torch With Euro Fitting – 4.6m
Nozzles – 2 Per Pack	
P3-4392	BND 300 Conical Nozzle – 13mm
P3-4391	BND 300 Straight Nozzle – 16mm
P3-4492	BND 400 Conical Nozzle – 14mm
P3-4491	BND 400 Straight Nozzle – 19mm
BND Necks	
P3-4786	BND 300 Neck – 45°
P3-4790	BND 400 Neck – 45°
Tip Holders – 2 Per Pack	
WC-BE4335P	BND 300 Tip Holder/Head Assembly
WC-BE4435P	BND 400 Tip Holder/Head Assembly
Liners	
P3-43115	BND 300 Liner For Steel 0.9 to 1.2mm – 4.5m
P3-44115	BND 400 Liner For Steel 0.9 to 1.2mm – 4.5m
Contact Tips – 5 Per Pack	
P3-7488	BND 300/400 Contact Tips – 0.8mm
P3-7489	BND 300/400 Contact Tips – 0.9mm
P3-7496	BND 300/400 Contact Tips – 1.0mm
P3-7490	BND 300/400 Contact Tips – 1.2mm
P3-7491	BND 300/400 Contact Tips – 1.6mm
P3-7498	BND 300/400 Contact Tips, Alu/Flux Core – 1.2mm
Rubber Caps – 2 Per Pack	
WC-BE4323P	BND 300 Rubber Caps
WC-BE4423P	BND 400 Rubber Caps

Tweco Style MIG Torches & Parts

- Common Tweco style MIG torches and parts
- Contact ATOM for full range of torches and accessories



Product Code	Description
TWC MIG Torches	
3-MTM170	TWC1 Lincoln Magnum 100L Torch With Bayonet Fitting – 3m
3-MTT2E/12	TWC2 Torch With Euro Fitting – 3.5m
3-MTT4B/12	TWC4 Torch With Bayonet Fitting – 3.5m
3-MTT4B/15	TWC4 Torch With Bayonet Fitting – 4.6m
3-MTT4E/12	TWC4 Torch With Euro Fitting – 3.5m
3-MTT4E/15	TWC4 Torch With Euro Fitting – 4.6m
3-MTT5B/15	TWC5 Torch With Bayonet Fitting – 4.5m
3-MTT5E/15	TWC5 Torch With Euro Fitting – 4.5m
TWC Nozzles – 2 Per Pack	
P3-2150	TWC1 Conical Nozzle – 13mm
P3-170GN	TWC1 Gasless Nozzle
P3-2250	TWC2 Conical Nozzle – 12mm
P3-2262	TWC2 Straight Nozzle – 16mm
P3-2350	TWC4 Self-Insulated Nozzle – 13mm
P3-2362	TWC4 Self-Insulated Nozzle – 16mm
P3-24A62	TWC4 Push-On Conical Nozzle – 16mm
P3-24A75	TWC4 Push-On Straight Nozzle – 20mm
P3-24CT62S	TWC4 Heavy Duty Conical Nozzle – 16mm
P3-24CT75S	TWC4 Heavy Duty Straight Nozzle – 20mm
TWC Necks	
P3-64A45HD	TWC4 Heavy Duty Neck – 45°
P3-64A60HD	TWC4 Heavy Duty Neck – 60°
Diffusers – 2 Per Pack	
P3-170GD	TWC1 Gas Diffuser – Suits Magnum 100L
P3-51	TWC1 Gas Diffuser
P3-52	TWC2 Gas Diffuser
P3-54A	TWC4 Gas Diffuser/Tip Holder
Insulators – 2 Per Pack	
P3-32	TWC2 Insulator – Black
P3-34A	TWC4 Insulator – Black
P3-34CT	TWC4 Heavy Duty Copper Insulator
TWC Liners	
P3-454015	TWC1 Liner For Steel 0.9 to 1.2mm – 4.5m
P3-42303515	TWC2 Liner For Steel 0.8 to 0.9mm – 4.5m
P3-42404515	TWC2 Liner For Steel 0.9 to 1.2mm – 4.5m
P3-44354515	TWC4 Liner For Steel 0.9 to 1.2mm – 4.5m
P3-4411615	TWC4 Liner For Steel 1.2 to 1.6mm – 4.5m
P3-4456415	WC4 Liner For Steel 1.6 to 2.0mm – 4.5m
Adaptors	
P3-X52	TWC4 Adaptor For Use On Eliminator 250 Torch
Contact Tips – 5 Per Pack	
P3-1123	TWC1 Contact Tips 11/23 – 0.6mm
P3-1130	TWC1 Contact Tips 11/30 – 0.8mm
P3-1135	TWC1 Contact Tips 11/35 – 0.9mm
P3-1140	TWC1 Contact Tips 11/40 – 1.0mm
P3-1145	TWC1 Contact Tips 11/45 – 1.2mm
P3-1430	TWC2 & TWC4 Contact Tips 14/30 – 0.8mm
P3-1435	TWC2 & TWC4 Contact Tips 14/35 – 0.9mm
P3-1440	TWC2 & TWC4 Contact Tips 14/40 – 1.0mm
P3-1445	TWC2 & TWC4 Contact Tips 14/45 – 1.2mm
P3-14H35	TWC2 & TWC4 Heavy Duty Contact Tips – 0.9mm
P3-14H40	TWC2 & TWC4 Heavy Duty Contact Tips – 1.0mm
P3-14H45	TWC2 & TWC4 Heavy Duty Contact Tips – 1.2mm
P3-14H52	TWC2 & TWC4 Heavy Duty Contact Tips, Alu/Flux Core – 1.2mm
P3-14H116	TWC2 & TWC4 Heavy Duty Contact Tips – 1.6mm

TIG Torches & Parts

- Common TIG torches and parts
- Contact ATOM for full range of torches and accessories



Product Code	Description
Promax TIG Torch Kits	
3-TTU2917V/4	Universal Torch With 9 & 17 Series Valve Heads – 4m
3-TTU2917V/8	Universal Torch With 9 & 17 Series Valve Heads – 8m
3-TTU226V/4	Universal Torch With 26 Series Valve Heads – 4m
3-TTU226V/8	Universal Torch With 26 Series Valve Heads – 8m
3-TTU226T/4	Universal Torch With 26 Series Heads & Trigger Switch – 4m
3-TTU226T/8	Universal Torch With 26 Series Heads & Trigger Switch – 8m
Torch Heads	
P3-TB17	17 – Standard, No Valve
P3-TB17F	17F – Flexible, No Valve
P3-TB17FV	17FV – Flexible With Valve
P3-TB17V	17V – Valved
P3-TB26	26 – Standard, No Valve
P3-TB26F	26F – Flexible, No Valve
P3-TB26FV	26FV – Flexible With Valve
P3-TB26V	26V – Valved
Collets & Gas Lens – Suits 17/18/26 Series – 2 Per Pack	
P3-10N23	Collet – 1.6mm
P3-10N24	Collet – 2.4mm
P3-10N25	Collet – 3.2mm
P3-10N31	Collet Body – 1.6mm
P3-10N32	Collet Body – 2.4mm
P3-10N28	Collet Body – 3.2mm
WC-45V25P	Gas Lens Collet Body – 1.6mm
WC-45V26P	Gas Lens Collet Body – 2.4mm
WC-45V27P	Gas Lens Collet Body – 3.2mm
Ceramic Cups – Suits 17/18/26 Series – 2 Per Pack	
P3-10N50	Ceramic Alumina Cup – 6.4mm #4
P3-10N49	Ceramic Alumina Cup – 7.9mm #5
P3-10N48	Ceramic Alumina Cup – 9.5mm #6
P3-10N47	Ceramic Alumina Cup – 11.1mm #7
P3-10N46	Ceramic Alumina Cup – 12.7mm #8
P3-10N45	Ceramic Alumina Cup – 15.8mm #10
WC-54N18P	Ceramic Gas Lens Cup – 6.4mm #4
WC-54N17P	Ceramic Gas Lens Cup – 7.9mm #5
WC-54N16P	Ceramic Gas Lens Cup – 9.5mm #6
WC-54N15P	Ceramic Gas Lens Cup – 11.1mm #7
WC-54N14P	Ceramic Gas Lens Cup – 12.7mm #8
WC-53N88P	Ceramic Gas Lens Cup – 15.8mm #10
Back Caps – Suits 17/18/26 Series – 2 Per Pack	
WC-57Y04P	Back Cap Short
WC-57Y05P	Back Cap Medium
WC-57Y02P	Back Cap Long
Gas Lens Gasket – Suits 17/18/26 Series – 2 Per Pack	
WC-54N01P	Gas Lens Cup Gasket