



LIGHTWEIGHT SHIRTS



DS2118

LIGHTWEIGHT VENTED HI VIS DRILL SHIRT

160gsm 100% Cotton Drill Fabric
Vertical back cooling vents and underarm vents
Australian Standards - Day use only

DS2118	YELLOW/NAVY	S-5XL
DS2118	ORANGE/NAVY	S-5XL



DS2118T1

LIGHTWEIGHT VENTED HI VIS DRILL SHIRT WITH 3M TAPE

160gsm 100% Cotton Drill Fabric
Vertical back cooling vents and underarm vents
3M reflective tape, double hoop configuration
Australian standards - Day/Night use

DS2118T1-Y/N	YELLOW/NAVY	S - 5XL
DS2118T1-O/N	ORANGE/NAVY	S - 5XL



DS1118

LIGHTWEIGHT VENTED HI VIS DRILL SHIRT

160gsm 100% Cotton Drill Fabric
Vertical back cooling vents and underarm vents
Australian Standards - Day use only

DS1118-ORA	ORANGE	S-5XL
------------	--------	-------



DS1118T1

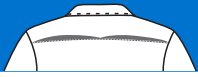
LIGHTWEIGHT VENTED HI VIS DRILL SHIRT WITH 3M TAPE

160gsm 100% Cotton Drill Fabric
Vertical back cooling vents and underarm vents
3M Reflective tape, double hoop configuration
Australian standards - Day/Night use

DS1118T1-ORA	ORANGE	S - 5XL
--------------	--------	---------

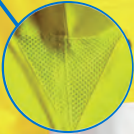


HORIZONTAL BACK COOLING VENTS



2 PIECE COLLAR

UNDERARM MESH VENTS



BUTTON DOWN FLAP POCKET

PEN PARTITION

3M REFLECTIVE TAPE



TRI-BUTTON WRIST CUFF



DS2166T1

LIGHTWEIGHT VENTED HI VIS DRILL SHIRT WITH 3M TAPE

160gsm 100% Cotton Drill Fabric
Horizontal back cooling vents and underarm vents
3M Reflective tape, double hoop configuration
Australian standards - Day/Night use

DS2166T1-Y/N	YELLOW/NAVY	S - 5XL
DS2166T1-O/N	ORANGE/NAVY	S - 5XL



HORIZONTAL BACK COOLING VENTS



DS1166T3

LIGHTWEIGHT VENTED HI VIS DRILL SHIRT WITH TRu^{RT} TAPE

160gsm 100% Cotton Drill Fabric
Horizontal back cooling vents
Underarm vents
TRu^{RT} Reflective Tape
Australian standards - Day/Night use

DS1166T3-ORA	ORANGE	S-5XL
--------------	--------	-------





REGULAR WEIGHT SHIRTS



DS2112

REGULAR WEIGHT HI VIS COTTON SHIRT

190gsm 100% Cotton Drill Fabric
Pen partition with flap down pockets
Australian Standards - Day use only

DS2112-Y/N	YELLOW/NAVY	S-5XL
DS2112-O/N	ORANGE/NAVY	S-5XL



DS2112T1

REGULAR WEIGHT HI VIS COTTON SHIRT WITH 3M TAPE

190gsm 100% Cotton Drill Fabric
3M Reflective Tape, double hoop configuration
Pen partition with flap down pockets
Australian standards - Day/Night use

DS2112T1-Y/N	YELLOW/NAVY	S - 5XL
DS2112T1-O/N	ORANGE/NAVY	S - 5XL



DS1112T1

REGULAR WEIGHT HI VIS COTTON SHIRT WITH 3M TAPE

190gsm 100% Cotton Drill Fabric
3M Reflective Tape, double hoop configuration
Pen partition with flap down pockets
Australian standards - Day/Night use

DS118T1-ORA	ORANGE	S-5XL
-------------	--------	-------





DS2114

REGULAR WEIGHT HI VIS COTTON CLOSED FRONT SHIRT

190gsm 100% Cotton Drill Fabric
Closed Front Placket
Australian Standards - Day use only

DS2114-Y/N	YELLOW/NAVY	S - 5XL
DS2114-O/N	ORANGE/NAVY	S - 5XL



DS2114 T1

REGULAR WEIGHT HI VIS COTTON CLOSED FRONT SHIRT WITH 3M TAPE

190gsm 100% Cotton Drill Fabric
Closed Front Placket
3M Reflective Tape, double hoop configuration
Australian standards - Day/Night use

DS2114T1-Y/N	YELLOW/NAVY	S - 5XL
DS2114T1-O/N	ORANGE/NAVY	S - 5XL



DS1114T1

REGULAR WEIGHT HI VIS COTTON CLOSED FRONT SHIRT WITH 3M TAPE

190gsm 100% Cotton Drill Fabric
Closed Front Placket
3M Reflective Tape, double hoop configuration
Australian standards - Day/Night use

DS1114T1-ORA	ORANGE	S - 5XL
--------------	--------	---------



LADIES WORK SHIRTS



DSW2169T1

RIP STOP HI VIS COTTON VENTED SHIRT WITH 3M TAPE - LADIES

145gsm Super Lightweight Ripstop Fabric
Horizontal back mesh vents and underarm vents
3M Reflective Tape, double hoop configuration
Australian standards - Day/Night use

DSW2169T1-Y/N	YELLOW/NAVY	8 - 22
DSW2169T1-O/N	ORANGE/NAVY	8 - 22



DSW2112T1

REGULAR WEIGHT HI VIS COTTON SHIRT WITH 3M TAPE - LADIES

190gsm 100% Cotton Drill Fabric
3M Reflective tape, double hoop configuration
Pen partition with flap down pockets
Australian standards - Day/Night use

DSW2112T1-Y/N	YELLOW/NAVY	8 - 22
---------------	-------------	--------



DSW1166T1

LIGHTWEIGHT VENTED HI VIS DRILL SHIRT WITH 3M TAPE - LADIES

160gsm 100% Cotton Drill fabric
Horizontal back cooling vents and underarm vents
3M Reflective tape, double hoop configuration
Australian standards - Day/Night use

DSW1166T1-ORA	ORANGE	8 - 22
---------------	--------	--------



DSW2166T1

LIGHTWEIGHT VENTED HI VIS DRILL SHIRT WITH 3M TAPE - LADIES

160gsm 100% Cotton Drill Fabric
Horizontal back cooling vents and underarm vents
3M Reflective tape, double hoop configuration
Australian standards - Day/Night use

DSW2166T1-Y/N	YELLOW/NAVY	S - 5XL
DSW2166T1-O/N	ORANGE/NAVY	S - 5XL

DTW1150

MID WEIGHT COTTON CARGO TROUSER

270gsm Cotton Canvas Fabric
Phone and Multi Tool Pocket
2 Hip pockets

DTW1150-NAV	NAVY	8-22
DTW1150-GRN	GREEN	8-22
DTW1150-SAF	SAFARI	8-22



DTW1150T

MIDWEIGHT CARGO TROUSER WITH TAPE

270gsm 100% Cotton Canvas Fabric
Phone & Multi tool pocket on legs
3M Reflective Tape
2 rear patch pockets with velcro flap
Australian standards - Night use

DTW1150T-NAV	NAVY	6 - 22
--------------	------	--------



RIP STOP SHIRTS



DS1169

RIP STOP COTTON VENTED SHIRT

145gsm 100% Super Lightweight Ripstop Fabric
Horizontal back mesh vents
Underarm vents

DS1169-NAV	NAVY	S-5XL
------------	------	-------



DS2169

RIP STOP HI VIS COTTON VENTED SHIRT

145gsm Super Lightweight Ripstop Fabric
Horizontal back mesh vents
Underarm vents
Australian standards - Day use

DS2169-Y/N	YELLOW/NAVY	S - 5XL
DS2169-O/N	ORANGE/NAVY	S - 5XL



DS2175

RIP STOP HI VIS COTTON VENTED SHIRT

145gsm Super Lightweight Ripstop Fabric
Horizontal back mesh vents
Underarm vents
Australian standards - Day use

DS2175-Y/N	YELLOW/NAVY	S-5XL
------------	-------------	-------



DS2169T1

RIP STOP HI VIS COTTON VENTED SHIRT WITH 3M TAPE

145gsm Super Lightweight Ripstop Fabric
3M Reflective tape, double hoop configuration
Horizontal back mesh vents and underarm vents
Australian standards - Day/Night use

DS2169T1-Y/N	YELLOW/NAVY	S - 5XL
DS2169T1-O/N	ORANGE/NAVY	S - 5XL



TS2851

MICROMESH HI-VIS POLO

175gsm Mircomesh Polyester
Breathable fabric
Chest pocket with pen partition
Ribbed collar
Australian standards - Day use

TS2851-Y/N	YELLOW/NAVY	XS-5XL
TS2851-O/N	ORANGE/NAVY	XS-5XL



TS2850

MICROMESH HI-VIS POLO

175gsm Mircomesh Polyester
Breathable fabric
Chest pocket with pen partition
Ribbed collar and wrist cuff
Australian standards - Day use

TS2850-Y/N	YELLOW/NAVY	XS-5XL
TS2850-O/N	ORANGE/NAVY	XS-5XL



TS2850T1

MICROMESH HI-VIS POLO WITH TRuRT TAPE

175gsm Breathable Mircomesh Polyester
TRuRT Reflective Tape
Double Hoop Configuration
Australian standards - Day/Night use

TS2850T1-Y/N	YELLOW/NAVY	XS-5XL
TS2850T1-O/N	ORANGE/NAVY	XS-5XL

WORK SHORTS



DT1139

HEAVY WEIGHT COTTON CARGO SHORT

320gsm Cotton Drill fabric
Cargo flap pockets on both legs
Tool pocket on RH leg
Back RH pocket

DT1139-NAV	NAVY	77R - 112R
------------	------	------------



DT1147

MID WEIGHT COTTON CARGO SHORT

270gsm Cotton Canvas Fabric
Cargo flap pockets on both legs
Back flap pockets on both side
Coin pocket in RH waist side pocket

DT1147-NAV	NAVY	77R - 112R
DT1147-GRN	GREEN	77R - 112R



WORK PANTS & CARGO PANTS



DT1140

HEAVY WEIGHT COTTON TROUSER

320gsm Cotton Drill Fabric
Integrated belt loops
2 hip pockets, 1 rear pocket

DT1140-NAV NAVY
REG: 77-112, STO: 87-132, LONG: 84-94



DT1142

HEAVY WEIGHT COTTON CARGO

320gsm Cotton Drill Fabric
Phone & Multi tool pockets on legs
Integrated belt loops
2 hip pockets, 1 rear pocket

DT1142-NAV NAVY
REG: 77-112, STO: 87-132, LONG: 84-94



DT1138

REGULAR WEIGHT COTTON TROUSERS

190gsm Cotton Drill Fabric
Integrated belt loops
2 hip pockets, 1 rear pocket

DT1138-NAV NAVY
REG: 77-112, STO: 87-132, LONG: 79-94



DT1140T

HEAVY WEIGHT COTTON TROUSER WITH 3M TAPE

320gsm 100% Cotton Drill Fabric
2 hip pockets, 1 rear pocket
3M Reflective Tape
Australian standards - Night use

DT1140T-NAV NAVY
REG: 77-112, STO: 87-132, LONG: 79-94



DT1142T

HEAVY WEIGHT COTTON CARGO WITH 3M TAPE

320gsm 100% Cotton Drill Fabric
Phone & Multi-tool Pocket
2 hip pockets, 1 rear pocket
3M Reflective Tape
Australian standards - Night use

DT1142T-NAV NAVY
REG: 77-112, STO: 87-132, LONG: 79-94



DT1138T

REGULAR WEIGHT COTTON TROUSERS WITH 3M TAPE

190gsm 100% Cotton Drill Fabric
2 hip pockets, 1 rear pocket
3M Reflective Tape
Australian standards - Night use

DT1138T-NAV NAVY
REG: 77-112, STO: 87-132, LONG: 84-94



DT1150

MID WEIGHT COTTON CARGO TROUSER

270gsm 100% Cotton Canvas Fabric
Phone and Multi Tool Pocket
2 Hip pockets
2 Rear Patch Pockets with Velcro Flaps



DT1150-NAV	NAVY	DT1150-BLK	BLACK	REG: 77-112, STOUT: 87-132, LONG: 84-94
DT1150-GRN	GREEN	DT1150-SAF	SAFARI	



DT1150T

MID WEIGHT COTTON CARGO WITH 3M TAPE

270gsm 100% Cotton Canvas Fabric
Phone & Multi-tool pocket on legs
3M Reflective Tape
2 rear patch pockets with velcro flap
Australian standards - Night use

DT1150T-NAV	NAVY
REG: 77-112, STO: 87-132, LONG: 79-94	



DT1154

DENIM JEANS

100% Cotton Denim Fabric
2 hip pockets
1 rear patch pocket

DT1154-DEN	DENIM
REG: 77-112, STO: 87-132, LONG: 79-94	



DT1154T

DENIM JEANS WITH TAPE

100% Cotton Denim Fabric
2 hip pockets
1 rear patch pocket
3M Reflective Tape
Australian standards - Night use

DT1154T-DEN	DENIM
REG: 77-112, STO: 87-132, LONG: 79-94	



DC2120T1

LIGHTWEIGHT HI-VIS COTTON COVERALL WITH 3M TAPE

190gsm 100% Cotton Drill Fabric
3M Reflective tape, double hoop configuration
Nylon heavy duty studs
Australian standards - Day/Night use

DC2120T1-Y/N	YELLOW/NAVY	DC2120T1-O/N	ORANGE/NAVY
REG: 77-112 STOUT: 87-132 LONG: 79-94			



DC1120T1

LIGHTWEIGHT COVERALL WITH 3M TAPE

190gsm 100% Cotton Drill Fabric
3M Reflective Tape, double hoop
Nylon heavy duty studs
Australian standards - Day/Night use

DC1120T1-ORA	ORANGE
Reg: 77-117, St: 87-132, Long: 79-94	





DC2180T1

HEAVYWEIGHT COVERALL WITH 3M TAPE

320gsm 100% Cotton Drill Fabric
3M Reflective tape, double hoop configuration
Heavy duty metal press studs
Australian standards - Day/Night use

DC2180T1-Y/N	YELLOW/NAVY
DC2180T1-O/N	ORANGE/NAVY
SIZES: REG: 77-112, STOUT: 87-132, LONG: 79-94	



DC2180

HEAVYWEIGHT COVERALL

320gsm 100% Cotton Drill Fabric
Heavy Duty metal press studs
Australian standards - Day use

DC2180-Y/N	YELLOW/NAVY
Reg: 77-117, St: 87-132, Long: 84-94	



DC2179T1

ACTION BACK OVERALL WITH 3M TAPE

320gsm 100% Cotton Drill Fabric
3M Reflective Tape
Australian standards - Day use

DC2179T1-Y/N	YELLOW/NAVY
Reg: 77-117, St: 87-132, Long: 84-94	





WINTER VESTS



TV1915T5

WET WEATHER REVERSIBLE VEST WITH TRuRT TAPE

300D Polyester Oxford Fabric
TRuRT Reflective tape
Reversible with Polar fleece fabric
Vest component of the TJ2910T6
Australian standards - Day/Night use

TV1915T5-YEL	YELLOW	XS-5XL
--------------	--------	--------



DV1193T1

MID WEIGHT COTTON CANVAS VEST WITH 3M TAPE

270gsm 100% Cotton Canvas Fabric
3M Reflective Tape
Inner vest for the DJ2196T1
Australian standards - Day/Night use

DV1193T1-YEL	YELLOW	XS - 5XL
--------------	--------	----------



COTTON JACKETS



DJ2192T1

MID WEIGHT COTTON DRILL JACKET WITH TAPE

100% Cotton Canvas 270gsm
Hip Length with waist pockets
3M Reflective Tape, double hoop configuration
Reflective piping on chest
Australian standards - Day/Night use

DJ2192T1-Y/N	YELLOW/NAVY	XS-5XL
DJ2192T1-O/N	ORANGE/NAVY	XS-5XL



DJ2196T1

MID WEIGHT 3/4 LENGTH JACKET WITH TAPE

270gsm 100% Cotton Canvas Fabric
3/4 length jacket with 2 waist pockets
3M Reflective tape, double hoop configuration
Combines with DV1193T1 to make 4 in 1 jacket
Australian standards - Day/Night use

DJ2196T1-Y/N	YELLOW/NAVY	XS - 5XL
--------------	-------------	----------



TJ2940T7

BOMBER JACKET WITH 3M TAPE

300D Polyester Oxford Fabric
3M Reflective Tape, double hoop with additional shoulder tape
100% Waterproof, seam sealed
Quilt lined for added warmth
Australian standards - Day/Night use

TJ2940T7-Y/N	YELLOW/NAVY	XS-5XL
TJ2940T7-O/N	ORANGE/NAVY	XS-5XL



TJ2900T6

RAIN JACKET WITH TRu^{RT} TAPE

300D Polyester Oxford Fabric
TRu^{RT} Reflective Tape, double hoop configuration
100% Waterproof, seam sealed, concealed hood
Mesh lined jacket
Jacket component of the TJ2910T6
Australian standards - Day/Night use

TJ2900T1-Y/N	YELLOW/NAVY	XS - 5XL
--------------	-------------	----------



TJ2910T6

4 IN 1 RAIN JACKET WITH TRu^{RT} TAPE

300D Polyester Oxford Fabric
TRu^{RT} Reflective Tape, double hoop configuration
100% Waterproof, seam sealed, concealed hood
Inner Reversible vest with tape
Combination of TV1915T5 & TJ2900T6
Australian standards - Day/Night use

TJ2910T6-Y/N	YELLOW/NAVY	XS - 5XL
TJ2910T6-O/N	ORANGE/NAVY	XS - 5XL



TJ2930T6

5 IN 1 RIP STOP RAIN JACKET COMBO WITH 3M TAPE

300D Polyester Oxford Rip-Stop Fabric
3M Reflective Tape
100% Waterproof, seam sealed
Quilt lined inner jacket with removable sleeves
Australian standards - Day/Night use

TJ2930T6-Y/N	YELLOW/NAVY	XS - 5XL
TJ2930T6-O/N	ORANGE/NAVY	XS - 5XL



FLAME RESISTANT

TRU
FIRE RETARDANT
WORKWEAR

Concealed
Press Studs

2 Way
Radio Loop

Rip Stop
FR Fabric

Sewn On
Property Label

LOXY FR
Reflective Tape

Integrated
Pen Partition

TS2500T1

**LIGHTWEIGHT HRC1 FR
SHIRT WITH LOXY FR TAPE**

155gsm Inherent Flame Retardant Fabric
50% Modacrylic, 32% Cotton,
10% Polyamide, 8% Polyarylate
Concealed studs, Gusset Sleeve
ATPV 5.9 cal/cm, HRC 1
Australian standards - Day/Night use

TS2500T1-Y/N	Yellow/Navy	S - 5XL
TS2500T1-O/N	Orange/Navy	S - 5XL



TS1500T1

**LIGHTWEIGHT HRC1 FR SHIRT
WITH LOXY FR TAPE**

155gsm Inherent Flame Retardant Fabric
50% Modacrylic, 32% Cotton, 10% Polyamide, 8% Polyarylate
Concealed studs, Gusset Sleeve
ATPV 5.9 cal/cm, HRC 1
Australian standards - Day/Night use

TS1500T1-ORA	ORANGE	S-5XL
--------------	--------	-------



PARVOTEX™

ARC AND FLASH FIRE PROTECTION

- Parvotex inherent FR provides multi hazard protection against the Electric arc and Flash fire.
- The FR protection is built into the fabric, inherent thermal protection properties and cannot be washed or worn out.
- Parvotex stands up to more washes, has better protection and better durability than FR treated or inherent fabric blends in similar weights.
- Parvotex retains its appearance throughout extended on the job use and repeated laundering.
- The unique fiber blending with Kaneka and Kuraray Vectran®, cotton, polyamide and the twill ripstop fabric construction gives better wearer comfort and durability than other FR treated or Inherent FR blends.



OEKO-TEX® STANDARD 100, PRODUCT CLASS II CERTIFIED

The Oeko-Tex® standard 100, is an independent testing and certification system for textiles. The criteria for certification includes testing for the following substances:

- Illegal substances
 - Legally regulated substances
 - Known harmful (but not legally regulated) chemicals
 - As well as parameters for health care
- Product Class II – Certification for textiles used close to the skin (underwear, bed linen, t-shirts etc)



TC1570T1

HRC2 FR COVERALL WITH LOXY FR TAPE

197gsm Inherent Flame Retardant Fabric
50% Modacrylic, 32% Cotton,
10% Polyamide, 8% Polyarylate
Concealed studs, Gusset Sleeve
ATPV 8.6 cal/cm, HRC 2
Australian standards - Day/Night use

TC1570T1-ORA ORANGE
77R-117R, 87S-132S



TC2570T1

HRC2 FR COVERALL WITH LOXY FR TAPE

197gsm Inherent Flame Retardant Fabric
50% Modacrylic, 32% Cotton,
10% Polyamide, 8% Polyarylate
Concealed studs, Gusset Sleeve
ATPV 8.6 cal/cm, HRC 2
Australian standards - Day/Night use

TC2570T1-Y/N Yellow/Navvy
77R-117R, 87S-132S



TT1550T1

HRC2 FR WORK TROUSERS

197gsm Inherent Flame Retardant Fabric
50% Modacrylic, 32% Cotton,
10% Polyamide, 8% Polyarylate
Concealed studs
ATPV 8.6 cal/cm, HRC 2
Australian standards - Night use

TT1550T-NAV NAVY
77R-117R, 87S-132S, 84L-94L



TT1560T1

HRC2 FR CARGO TROUSERS

197gsm Inherent Flame Retardant Fabric
50% Modacrylic, 32% Cotton,
10% Polyamide, 8% Polyarylate
Concealed studs
Cargo pocket on both sides
ATPV 8.6 cal/cm, HRC 2
Australian standards - Night use

TT1560T-NAV NAVY
77R-117R, 87S-132S, 84L-94L



TS2590T1

HRC2 FR SHIRT WITH LOXY FR TAPE

197gsm Inherent Flame Retardant Fabric
50% Modacrylic, 32% Cotton,
10% Polyamide, 8% Polyarylate
Concealed studs, Gusset Sleeve
ATPV 8.6 cal/cm, HRC 2
Australian standards - Day/Night use

TS2590T1-Y/N Yellow/Navvy S - 5XL
TS2590T1-O/N Orange/Navvy S - 5XL

Tru Workwear (TRu) was established in 2013 as a new company importing premium quality workwear for the Australian market. The directors and management team have over 50 years experience and have developed particular expertise in the design, manufacturing, importing and distribution of Workwear for the Australian market. In this time we have developed an intimate knowledge of the requirements of the market and the organizations that we do business with, In particular, we have developed a clear understanding of all the issues that arise when a 'roll out' of new uniform is required. As a consequence, we believe that no business is better positioned to supply the range of products and the services to the market.

TRu have invested heavily in infrastructure, people, inventory and systems to enable us to serve our customer base. Our capabilities are well established and we have a proven track record. We are aware that many organisations will claim to be capable and equipped to undertake such tasks. We contend however that proven performance outweighs promises, particularly in the service function.

At TRu our mission is to provide the highest quality Workwear and Service along with value for money to our clients. We have a well established supply chain with a successful partnership of over 20 years along with our understanding of the Australian market ensures we are well positioned to offer you the right products and most important "Service".

We uphold the belief that quality garments can only be produced from quality fabric. We set the specifications for our garments right from the beginning of the whole manufacturing process. This includes control of yarns used, spinning and dyeing methods to obtain a better consistent product. It is this control that allows us to achieve continuity in fabric weights, tear strength, colourfastness and a shrinkage rate below the required standard.

ICON DEFINITIONS



TRu garment meets Day Standard AS/NZS 4602.1:2011 Class D - Garments suitable for day use only



TRu garment is 100% cotton fabric



Day / Night Standard - AS/NZS 4602.1:2011 Class D/N - Garments suitable Day or Night use. Materials Tested to AS/NZS 1906.4:2010



Vented shirt - Shirt contains venting options that use the natural flow of air to cool body temperature.



Night Standard - AS/NZS 4602.1:2011 Class N - Garments suitable for Night use only. Material tested to AS/NZS 1906.4:2010



RIPSTOP fabric is a fabric using a special reinforcing technique that makes them resistant to tearing and ripping.



UPF Sun Protection AS/NZS 4399:1996 UPF50+ offers excellent protection from harmful UV rays



Tru garment using a lightweight fabric offering wearer greater comfort in hot and humid conditions.



UPF Sun Protection AS/NZS 4399:1996 UPF40+ offers excellent protection from harmful UV rays



3M Reflective tape is used on the garment. 3M material is tested to AS/NZS 1906.4:2010



Standard AS/NZS 1020:1995. The control of undesirable static electricity. Cotton fibres naturally do not hold or generate static electricity.



TRu^{RT} Reflective Tape is used on the garment. TRu^{RT} Reflective Tape is tested to AS/NZS 1906.4:2010



Fabric has a waterproof finish or coating, whilst the garment remains breathable. The seams have been sealed to ensure water does not leak into the garment.



Loxy FR 9801 Silver Reflective Tape. Loxy Tape is tested to AS/NZS 1906.4:2010



Hazard Risk category, NPFA 70E-Compliant to Category 1, min ATPV 4 cal/cm²



Breathable Fabric



Hazard Risk category, NPFA 70E-Compliant to Category 2, min ATPV 8 cal/cm²



Inherent Flame Retardant garment



Oeko-Tex 100 Class II Fabric

SIZE CHART

SHIRTS

SIZE	XS	S	M	L	XL	2XL	3XL	4XL	5XL
NECK	34/35	36/37	38/39	41/42	43/44	45/46	47/48	49/50	51/52
TO FIT CHEST	85	90	95	100	105	110	115	120	125
SHIRT 1/2 CHEST*	53	55	59	63	67	72	76	80	83

*1/2 CHEST MEASUREMENT IS CALCULATED BY MEASURING ARMPIT TO ARMPIT ON A FLAT SURFACE

JACKETS / VESTS

SIZE	XS	S	M	L	XL	2XL	3XL	4XL	5XL
TO FIT CHEST	85	90	95	100	105	110	115	120	125

POLO SHIRTS

SIZE	XS	S	M	L	XL	2XL	3XL	4XL	5XL
TO FIT CHEST	34/35	36/37	38/39	41/42	43/44	45/46	47/48	49/50	51/52
SHIRT 1/2 CHEST*	53	55	59	63	67	72	76	80	83

*1/2 CHEST MEASUREMENT IS CALCULATED BY MEASURING ARMPIT TO ARMPIT ON A FLAT SURFACE

LADIES SHIRTS ♀

SIZE	8	10	12	14	16	18	20	22
TO FIT BUST (CM)	85	90	95	100	105	110	115	120
SHIRT 1/2 CHEST*	72	77	82	87	92	97	102	107

*1/2 CHEST MEASUREMENT IS CALCULATED BY MEASURING ARMPIT TO ARMPIT ON A FLAT SURFACE

LADIES PANTS ♀

SIZE	8	10	12	14	16	18	20	22
TO FIT WAIST	72	77	82	87	92	97	102	107
TO FIT HIPS	93	98	103	108	113	118	123	128

COVERALLS / PANTS / SHORTS

SIZE	REGULAR	77R	82R	87R	92R	97R	102R	107R	112R	117R
WAIST (INCHES)		30	32	34	36	38	40	42	44	46
TO FIT CHEST (CM)		85	90	95	100	105	110	115	120	125
INSIDE LEG		74	77	79	83	84	87	87	87	87

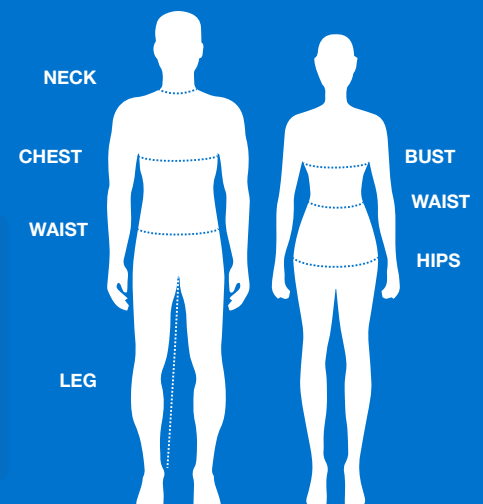
SIZE	STOUT	87S	92S	97S	102S	107S	112S	117S	122S	127S	132S
WAIST (INCHES)		34	36	38	40	42	44	46	48	50	52
TO FIT CHEST (CM)		95	100	105	110	115	120	125	130	135	140
INSIDE LEG		69	71	74	76	79	79	81	81	81	81

SIZE	LONG	79L	84L	89L	94L
WAIST (INCHES)		30	32	34	36
TO FIT CHEST (CM)		95	100	105	110
INSIDE LEG		80	83	85	88

HOW TO MEASURE

For an accurate fit please ensure the measuring tape is level and firm, but not tight.

NECK	Measure at collar level with 2 fingers behind measuring tape
CHEST/BUST	Stand naturally and measure around the largest part of chest/bust
WAIST/HIPS	Stand naturally and measure around waistline or hips, do not measure over clothing apart from under garments
LEG	Measured from the crotch to the heel of the shoe



ALL MEASUREMENTS ARE IN 'CM' UNLESS INDICATED OTHERWISE.
PLEASE NOTE: MEASUREMENTS ARE TO BE USED AS A GUIDE ONLY.
TO OBTAIN CORRECT SIZING WE SUGGEST SAMPLES BE USED AND TRIED ON.