



08

AUTOMOTIVE



## KINCROME AUTOMOTIVE RANGE

Kincrome offers a comprehensive range of industrial quality automotive tools, automotive specialist equipment and automotive accessories to suit the trade mechanic or D.I.Y enthusiast!

### The Kincrome Automotive Range Includes:

- Mechanic Creepers
- Torque Wrenches
- Mechanic Gloves (M,L,XL)
- Booster Cables
- Gear & Bearing Pullers
- Diagnostic Equipment
- Portable Jump Starts & much much more!



### Specialty Automotive

Kincrome offers a range of specialty automotive tools covering areas such as Diagnostic, Cooling, Braking, Panel repair, Electrical and general service tools.

### Torque Wrenches

Kincrome offers a diverse range of Torque Wrenches suitable for industrial, trade and the D.I.Y enthusiast. All of our torque wrenches are 100% factory calibrated, accompanied by a calibration certificate. This ensures that your

instrument is ready to get the job done, from the moment you purchase it. Micrometer and Deflecting Beam options come in multiple drive sizes to suit almost every application. See the NEW digital display models on Page 262.

### Booster Cable Range

Kincrome have introduced a full range of "Booster Cables" with 6 different models to suit any on-road or off-road vehicle application. From cars, trucks, boats to mining equipment there isn't much that our range can't jump start!

### Portable Jump Starters

Kincrome are always sourcing new and exciting products, keeping up to date with the latest technologies. We have 2 Portable Jump Starters, the "Power Pak" and the "Power Pak Plus", both of these products allow you to jump start your car quickly, easily and safely! They are both capable of charging your phones, portable devices and laptops with the included adaptors.



## ENGINE



### FUELINJECTOR NOZ- NOID LIGHT SET

6 PIECE

- Tests electronic fuel injection systems quickly & easily
- Comes complete with instructions and case

#### Includes:

GM PFI	BOSCH PFI
FORD TBI	GM TBI
GEO TBI	GM SCPI

INNER/OUTER 6/30 PART NO. 08116



### OVERHEAD VALVE SPRING COMPRESSOR

- Compresses valve springs on most cars and light trucks
- Tool can be used with cylinder head on or off the engine
- Long tapered offset jaw for a sure grip
- Chrome plated carbon steel

INNER/OUTER 6/48 PART NO. 08083



### ADJUSTABLE IGNITION SPARK TESTER

- Adjustable gap allows different spark gap requirements from 0 - 40,000 volts
- Suits lawn mowers to high energy ignition systems
- Tests for no start conditions
- Tests for spark strength
- Screw assembly for quick spark gap adjustment

INNER/OUTER 6/24 PART NO. 08086



### COMPRESSION TESTER SET

#### Includes:

- Compression gauge with quick release coupler (Scale 0 - 300 psi, 0 - 2000 Kpa)
- NBR hose- length 390mm (15.1/2") (Fits M14 and M18)
- Extension 40mm (1.1/2") M14
- Straight aluminium tube with quick release coupler 180mm (7")
- Angled aluminium tube with quick release coupler 180mm (7")

INNER/OUTER 6/24

PART NO. 08109



### ENGINE CYLINDER HONE

51MM - 177MM

- Adjustable spring tension for positive cutting action, 51mm - 177mm (2" - 7")
- Smooth honing at all speeds
- Spread limit permits easy insertion into cylinder
- Supplied with fine grade stones, 100m (4") length
- Use with a variable speed drill
- Coarse and fine replacement stones are available

INNER/OUTER 2/25

PART NO. 0100

### ENGINE CYLINDER HONE

51MM - 177MM

- Replacement stones for Part No. 0100
- Length: 100mm (4")

Part No		Grit Grade
0100C	Coarse	#120
0100F	Fine	#280

INNER/OUTER 12/60

## COMBINATION 2 AND 3 JAW RATCHETING GEAR PULLERS

- Combination 2 and 3 jaw
- Jaws easily convert from 3 jaw action to 2 jaw action with minimal effort
- Reversible (internal/external)
- Jaws easily adjust using ratcheting geared jaws that hold legs in place
- Jaws easily adjust from internal to external in minimal time
- Removes and installs water pump, alternator and other pulleys with a wide range of special applications
- Jaws and threads made from Chrome Molybdenum
- Body made from FCD 45
- Rotating centre pin



## RATCHETING GEAR PULLER

2 TON

INNER/OUTER 6/12

PART NO. K8153



## RATCHETING GEAR PULLER

5 TON

INNER/OUTER 6/12

PART NO. K8154



## RATCHETING GEAR PULLER

7 TON

INNER/OUTER 6/12

PART NO. K8155

## 2 AND 3 JAW GEAR PULLERS

## 2 JAW GEAR PULLER

3" (75MM) - 1.5 TON

- Used for removing gears, bearings & pulleys etc
- Drop forged alloy steel
- Material: Cr-V steel, nickel plated jaws & black finished bolt

INNER/OUTER 12/24

PART NO. K8126



## 3 JAW GEAR PULLER

3" (75MM) - 2 TON

- Used for removing gears, bearings & pulleys etc
- Drop forged alloy steel
- Material: Cr-V Steel, nickel plated jaws & black finished bolt

INNER/OUTER 12/24

PART NO. K8127

## 2 JAW GEAR PULLER

6" (150MM) - 5 TON

- Used for removing gears, bearings & pulleys etc
- Drop forged alloy steel
- Material: Cr-V Steel, nickel plated jaws & rotating centre pin

INNER/OUTER 6/12

PART NO. K8128

## 3 JAW GEAR PULLER

6" (150MM) - 7 TON

- Used for removing gears, bearings & pulleys etc
- Drop forged alloy steel
- Material: Cr-V Steel, nickel plated jaws & rotating centre pin

INNER/OUTER 6/12

PART NO. K8129



## 3 IN 1 AUTOGRIP GEAR PULLERS

### FEATURES

- Drop forged CR-V
- Full colour carton
- Anodised spring and top cap
- Working range: 4" (76mm - 102mm),  
7" (76mm - 178mm)

### SPECIFICATIONS

- All new Auto Grip 3-In-1 Gear Puller that comes with spring design to stabilise the jaws when gripping
- The 4 jaw holder makes it easy to adjust the gear puller from 3 jaws to 2 jaws and from being an Internal Gear Puller to an External Gear Puller
- It is designed to withstand extremely high pressure
- The patented Threaded Rod Pointer makes it effortless to use as the head stays in the same place even when under load



SCAN TO  
WATCH  
VIDEO



3 JAW



2 JAW



EXTERNAL

### 3 IN 1 AUTOGRIP GEAR PULLER (4") - 12 TON CAPACITY

102MM WORKING LEG LENGTH

INNER/OUTER 8/16

PART NO. K8123



### BEARING PULLER

19-35MM

- 19-35mm capacity • 6mm screw nose diameter
- 50mm hook length • 1 ton capacity

#### Suits Bearing numbers:

607, 608, 609, 626, 627, 628, 629, 636, 637, 638, 639, 6000, 6001, 6002, 6003, 6200, 6201, 6202, 6300, 6900, 6901, 6902, 6903

INNER/OUTER 6/12

PART NO. K8101

### BEARING PULLER

24-55MM

- 24-55mm capacity • 8mm screw nose diameter
- 100mm hook length • 1.3 ton capacity

#### Suits Bearing numbers:

609, 628, 629, 638, 639, 6000, 6001, 6002, 6003, 6004, 6005, 6006, 6200, 6201, 6202, 6203, 6204, 6205, 6300, 6301, 6302, 6303, 6304, 6901, 6902, 6903, 6904, 6905, 6906, 6907

INNER/OUTER 6/12

PART NO. K8102



## OIL FILTER WRENCH

### FLEXIBLE HANDLE

- Heavy duty construction
- Vinyl grip handle
- Assist in removing stubborn and hard to reach oil filters

Part No	Suits Filters - Diameter
<b>K080002</b>	73mm – 83mm (2.7/8" – 3.1/4")
<b>K080003</b>	87mm – 95mm (3.7/16" – 3.3/4")

INNER/OUTER 12/60

## EXTERNAL DISCONNECT SET

### 3 PIECE

- This external set works on Norma-Quick connect fuel lines found on the late model Ford, GM, Chrysler & Mitsubishi vehicles
- They simply clip over the connector and release the spring lock
- They will not damage fuel lines or connectors
- VT & later Commodore, AU & later Falcon, TJ & later Magna, GM Opel and Vectra

INNER/OUTER 10/50

PART NO. K8139

## FUEL & AC DISCONNECT SET

### 4 PIECE

- 4 piece kit suits most spring lock couplers on fuel injection and air condition lines
- Suits 5/16" (8mm), 1/2" (13mm), 5/8" (16mm), 3/4" (19mm)

INNER/OUTER 12/24

PART NO. K8140



## OIL FILTER WRENCH

### 2 WAY 3 JAW

- Loosens and tightens
- Fully adjustable by using 1/2" square drive tool or 21mm socket or spanner
- Manufactured from carbon steel, hardened with black finish

Suits Filters - 65mm - 120mm (2.1/2" - 4. 3/4") diameter

INNER/OUTER 12/60

PART NO. K080004



## OIL FILTER STRAP WRENCH

- Heavy duty non-slip nylon strap
- Use 1/2" square drive tool or 19mm socket or spanner

Suits Filters - Up to 150mm (6") diameter

INNER/OUTER 6/48

PART NO. K080005



## TOYOTA - LEXUS OIL FILTER WRENCH

### 4 CYLINDER

#### Features:

- Oil filter wrench provides multiple contact points that engage the housing cap securely allowing easy removal
- OE design and quality wrench fits Toyota and Lexus applications
- 3/8" Drive with 27mm hex
- 64.5mm with 14 flutes
- See website for full application list

INNER/OUTER 6/12

PART NO. K8173



## TOYOTA - LEXUS OIL FILTER WRENCH

### 6 & 8 CYLINDER

#### Features:

- 24mm hex
- Oil filter wrench provides multiple contact points that engage the housing cap securely allowing easy removal
- OE design and quality wrench fits Toyota and Lexus 6 & 8 cylinder applications
- Forged alloy material
- See website for full application list

INNER/OUTER 6/12

PART NO. K8174



## ELECTRONICS



### DIGITAL DC VOLTAGE TESTER

**VOLTAGE RANGE: 3 - 48 VOLTS**

- Used to detect voltage, ground and circuit integrity • Handy and sturdy storage case
- Large LCD screen provides a 'no-guess' voltage value of the circuit
- Backlit LED glows RED for power and GREEN for ground
- Computer safe (Not for use on Air Bags)

INNER/OUTER 6/24

PART NO. K8300



### SELF POWERED TIMING/WORK LIGHT

- Combines timing light and work light into one instrument
- Powered by two "D" cells or rechargeable batteries (not included)
- Works on all 12 volt gasoline engines
- LED double check indicator ensures proper hookup or detects faulty flash tube

INNER/OUTER 6/24

PART NO. K8141



### DIAGNOSTIC SCAN TOOL OBD2

**CAN ENABLED**

- Works with MOST 1996 and later, OBD2 compliant vehicles
- Supports all OBD2 protocols including the newer (CAN) Control Area Network
- Reads your (DTC) Diagnostic Trouble Codes for identification
- Turns off check engine light (MIL) • Erases (DTC) trouble codes and resets the OBD2 system
- Includes a user manual with a comprehensive list of the most current trouble codes

INNER/OUTER 4/8

PART NO. K8410



### CIRCUIT TESTER

**6 - 12 VOLT**

- To test low voltage circuits • Heavy duty probe and 900mm lead
- Comes with a shock resistant case
- For testing DC circuits on cars within the voltage range only.
- Not suitable for testing mains supply AC circuits

**WARNING** - For testing DC circuits on cars within the voltage range only.  
Not suitable for testing AC mains supply circuits.

INNER/OUTER 4/12

PART NO. 2401



### AUTOMOTIVE CIRCUIT TESTER

**HEAVY DUTY 6 - 24V**

- Low voltage tension circuit tester with 1.5m of heavy duty cable and earth (crocodile) clip
- Chrome finished blade insulated to prevent accidental short circuit

Probe Length:	90mm (3.1/2")
Suits:	6 - 24 Volt



### BATTERY & ALTERNATOR ANALYSER

**12V**

- This tool checks battery charge and alternator levels
- 880mm of insulated cable with test probe and earth (crocodile) clip
- For 12 volt DC systems only



### AUTOMOTIVE CIRCUIT TESTER

**VOLTAGE RANGE: 3 - 48 VOLTS**

- Automotive circuit tester with test lead for either passenger cars or trucks
- Checks the circuit between 3 - 48 volts safely and reliably

Suits:	3 - 48 Volt
--------	-------------

**WARNING** - For testing DC circuits on cars within the voltage range only. Not suitable for testing AC mains supply circuits.

INNER/OUTER 4/20

PART NO. 08103

INNER/OUTER 10/20

PART NO. 08104

INNER/OUTER 12/36

PART NO. K8135

## DIGITAL MULTI-METER

### PROFESSIONAL

#### Features and Benefits:

- Portable professional measuring instrument • 3 1/2 digit LCD Screen • Bar graph for reading pulse
- Resistance measurement • Capacitance measurement • DC and AC voltage measurement
- DC and AC current measurement • Diode test • Audible continuity test • Frequency test • Data hold button
- Range control button - can switch between manual and auto ranging
- **Supplied with:** Test leads (Electrical rating 1500V, 10A x 1 couple, battery 9V NEDA 1604 or 6F22 x 1 Piece, operating manual x 1 piece, protective holster with standard, small and large angle stands and wall mount, and test lead holders x 1 piece, capacitance testing adaptor, carry case • CE approval

Accuracy:	+/- % of reading +/- least significant digits
Power Supply:	9V Battery, NEDA 1604 or 6F22
Operating Temperature:	0° - 40°C (32° - 104°F)
Storage Temperature:	10° - 50°C (14° - 122°F)
Display:	LCD, 3260 counts MAX, updates 2-3 seconds

**INNER/OUTER 5/20**
**PART NO. K8014**


### Spare Parts

<b>Part No. K8014-1</b>	<b>Test leads</b>
<b>Part No. K8014-2</b>	<b>Bag to suit</b>



## DIGITAL MULTI-METER

- Shock proof case
- 'CE' approval
- Includes 9 volt replaceable battery
- Replaceable fuse F250ma
- Measures up to 600 volts DC

- Maximum input 600 volts RMS
- Maximum 2 Mega Ohms resistance
- Includes 2 x 750mm leads and probes
- Instructions included

**INNER/OUTER 10/50**
**PART NO. 08101**

## INFRARED THERMOMETER

### NON CONTACT

An Infrared handheld thermometer can accurately and safely read temperatures ranging from -30°C to 500°C, with a distance to spot ratio 12:1

- Non-contact infrared thermometer
- Distance to spot ratio 12:1
- Temperature range: -30° ~ 500°C -22° ~ 1022°F
- Changeable between °C & °F
- Laser pointer • Selectable emissivity

**INNER/OUTER 5/20**
**PART NO. K11110**

### Specifications

Distance To Spot Ratio	12:1
Temperature Range	-30° ~ 550°C (-22° ~ 1022°F)
Accuracy	±2.5% or ±3°F
Resolutions	0.1°C or 0.1°F
Operating Temperature	0°C ~ 50°C
Power Supply	9V Battery (Not Included)
Emissivity	Selectable (0.85, 0.90, 0.95)
Operating Humidity	Max 80%RH



## INFRARED THERMOMETER

### NON CONTACT

#### Features:

- Laser sight technology
- Longer battery life than traditional 9V thermometer
- Last measurement memory recall by pressing °C/F key while power is off
- Real time maximum temperature reading
- Auto shut-off extends battery life
- Large LCD screen, with bright amber colour backlit

#### Specifications:

- Accuracy (Tobj=-15~35°C, Tamb=25°C): +/-1.5°C(2.7°F)
- Accuracy (Tamb=23 +/-3°C): Tobj=0~365°C: +/-2.5% of reading or 2.5°C (4.5°F) whichever is greater
- Tobj=-35~0°C: +/- (2.5°C+0.05/degree)
- Resolution (-9.9~199.9°C): 0.2°C/0.5°F

\*\*The thermometer will automatically shut off if left idle for more than 15 seconds

Many uses, such as • Automotive • Industry • Cooking

Emissivity:	0.95 fixed
Response Time (90%):	<1sec
Distance:	Spot=8.1
Battery Life:	Typ. 18, min 14 hours continuous use
Dimensions:	166.4 x 33.9 x 63.5mm (6.55 x 1.33 x 2.50")
Weight:	113 grams (3.98oz) including batteries (AAA* 2pcs)

**INNER/OUTER 5/20**
**PART NO. K8006**






Accurate colour-coded display meter with scale from 0 to 16V



DC Amps Display



DC Volts Display



## BATTERY LOAD TESTER

### 6 VOLT OR 12 VOLT < 100 AMP

- Test 6V or 12V DC batteries, test the charging system, analyse battery condition, test starter motor on your vehicle - all with one tool
- Accurate colour-coded volt meter with scale from 0 to 16V
- Test standard lead acid vehicle batteries
- 100 Amp load test suitable for testing 12 Volt batteries up to 1000CCA
- 50 Amp load test suitable for testing 6 Volt batteries up to 1000CCA
- Metal case and powder coated surface provides protection of the battery tester

Includes:	
Battery test capacity	6VDC or 12VDC Lead acid batteries
Load test capacity	100Amps @ 12VDC or 50Amps @ 6VDC
Amps Capacity	200 to 1000CCA (Cold Cranking Amps)
Amps Setting	100 Amps
Display Meter	Analog, 0-16VDC (Max)
Voltage Range	0-16VDC
Accuracy	+/- 0.2VDC
Test cycle	10 seconds per test (MAX) 1 minute cool down per test

INNER/OUTER 5/10

PART NO. KP1460



## STANDARD BOOSTER CABLES

- Surge protection
- Heavy duty terminal clamps
- 12V battery/application
- (CCA) Copper clad aluminium cable

PART NO			INNER/OUTER
KP1451	Standard 100 AMP	• Suits 4 Cylinder Petrol Engines • 2.5m cable length	10/20
KP1452	Standard 200 AMP	• Suits 4 to 6 Cylinder Petrol Engines • 2.5m cable length	10/20

## BATTERY LOAD TESTER

### 12 VOLT < 500 AMP

- Test 12V DC batteries, alternators, regulators & starters
- Test batteries up to 160Ah/1000CCA
- 500 Amp adjustable load
- Large colour coded display meters
- Metal, powder coated surface

Includes:	
Battery test capacity	12V Lead acid batteries
Test range	Battery, alternator, regulators & starters
Load test capacity	Adjustable carbon pile 0 - 500 AMPS @ 12V DC
Amps capacity	Up to 160Ah/1000CCA (Cold Cranking Amps)
Amps setting	500 Amps
Voltage range	0-16V DC (MAX)
Voltage accuracy	+/- 0.1V DC
Test cycle	20 seconds per test (MAX) 2 minutes cool down in 5 minutes
Safety	Test buzzer after 15 seconds

INNER/OUTER 4/8

PART NO. KP1461



INCLUDES



**INTELLI-CHECK II**  
Alternator Check  
Reverse Polarity Alarm  
Battery Voltage Indicator

## HEAVY DUTY BOOSTER CABLES

- Extra heavy duty terminal clamps
- Surge protection
- 12V/24V battery/application
- Copper clamp bridge on KP1454,55, 56 models
- Intelli-Check system analyser - reverse polarity alarm, alternator charge check, battery voltage indicator

PART NO			INNER/OUTER
KP1453	Premium 400 AMP	• Suits 4 to 8 Cylinder Petrol Engines • 3m cable length	8/16
KP1454	Premium 600 AMP	• Suits Diesel & Petrol Engines • 3.5m cable length	5/15
KP1455	Ultimate 800 AMP	• Suits Commercial Vehicles • 3.5m cable length	5/15
KP1456	Ultimate 1000 AMP	• Suits Construction & Earth Moving • 6m cable length	6/12



## POWER PAK™ JUMP STARTER

### MULTI FUNCTION

- Intelli-Check jumper cables
    - Reverse polarity protection
    - Anti re-charge protection
    - Short circuit protection
    - Over discharge protection
    - Surge protection
  - 12V DC car charger
  - 240V AC charger
  - Boost button for extra power
  - Includes laptop charging cables, multi-purpose cable, electronic device adaptor cables
- Features**
- Jump start most vehicles requiring up to 400CCA (Petrol Vehicles, Motorbikes, Marine & Outdoor equipment)
  - Charge electronic products: MP3s, cameras laptop computers, tablets, mobile phones
  - Ideal for emergencies: camping, boating, holidays - where extra power is required

Specifications	
Battery Capacity	14.8wh (3700mAh)
Battery Cells	3
Output	<ul style="list-style-type: none"> <li>• 5V/2A - Mobile Phone, Tablet, PC, PSP, MP3/MP4</li> <li>• 12V/10A - Air pump or small accessory</li> <li>• 19V/3.5A - Laptop PC</li> <li>• Jump start - 12V up to 6 cylinder petrol vehicle</li> <li>• LED Light - Light Strobe, SOS</li> </ul>
Maxium Input	14V 1A DC
Starting Current	200A
Peak Current	400A
Lifetime	1000 Cycles

INNER/OUTER 5/10

PART NO. KP1401



## POWER PAK™ PLUS JUMP STARTER

### MULTI FUNCTION

- Intelli-Check jumper cables
    - Reverse polarity protection
    - Anti re-charge protection
    - Short circuit protection
    - Over discharge protection
    - Surge protection
  - 12V DC car charger
  - 240V AC charger
  - Boost button for extra power
  - Includes laptop charging cables, multi-purpose cable, electronic device adaptor cables
- Features**
- Jump start most vehicles requiring up to 600CCA (Petrol & Diesel Vehicles, Motorbikes, Marine & Outdoor equipment)
  - Charge electronic products: MP3s, cameras, laptop computers, tablets, mobile phones
  - Ideal for emergencies: camping, boating, holidays
  - Where extra power is required

Specifications	
Capacity	22.2wh (6100mAh)
Battery Cells	3
Output	<ul style="list-style-type: none"> <li>• 5V/1A - Mobile Phone, Tablet, PC, PSP, MP3/MP4</li> <li>• 12V/10A - 12V Devices, Air Pump etc</li> <li>• 19V/3.5A - Laptop</li> <li>• Jump Start - Petrol &amp; Diesel vehicles up to 8 cylinder with a battery CCA (Cold Crank Amp) rating of 600CCA or less</li> <li>• LED Light - Light Strobe, SOS</li> </ul>
Input	14V 1A DC
Starting Current	300A
Peak Current	600A
Lifetime	1000 Cycles

INNER/OUTER 5/10

PART NO. KP1404

## UNDER CAR

### TYRE REPAIR KIT

#### 53 PIECE

- 15 minute repair time
- On vehicle repair - no need to raise the vehicle or remove the wheel, can be used if vehicle is on an incline

Includes:	
• Protective Blow Mould Case	• 1 Pce Pencil Tyre Gauge
• 1 Pce Heavy Duty Zinc Alloy T-handle Insert Needle	• 1 Pce Lubricant
• 1 Pce Heavy Duty Zinc Alloy T Handle Spiral Probe Reamer	• 4 Pce Plastic Valve Caps
• 30 Pce Repair Plugs	• 4 Pce Chrome Hex Valve Caps
• 2 Pce Hex Keys	• 4 Pce Plastic Valve Casing
	• 4 Pce Valve Cores
	• 1 Pce Valve Tool

INNER/OUTER 5/10

PART NO. K8066

#### Spare Parts

Part No	Tyre Repair Plugs
K8066-3	Replacement Tyre Repair Kit for K8066



### TYRE LEVER SET

#### 2 PIECE

- 250mm (10") and 400mm (16") for extra length and leverage
- Chrome Finish
- Used for levering tyres on and off car and motorbike rims
- Carbon Steel
- Drop Forged

Sizes: 250mm (10") and 400mm (16")

INNER/OUTER 12/48

PART NO. K8148



### UNIVERSAL BEARING PACKER

- Fast and efficient: place the bearing between the metal cones, tighten, and apply grease through the fitting on the end of the thread shaft. Forces out the old grease and evenly injects fresh grease

Cone Diameter: 125mm (5")

INNER/OUTER 6/24

PART NO. 08061



## BRAKES



### DIGITAL TYRE GAUGE

#### BACK LIT SCREEN

- CE approved
- Accuracy - 35 +/-1 PSI (at 25° within range 0.5 - 99.5 PSI)
- 1 x 3V CR2032 button cell (Included) • PSI, Kpa, BAR scales
- Auto 'Off' after 45 seconds, or depress button continuously for 3 seconds

INNER/OUTER 12/144

PART NO. K8065



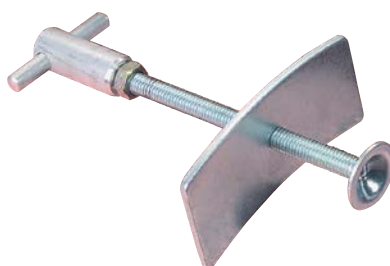
### DIGITAL DISC BRAKE CALIPER

4" (100MM)

- On/Off button • Metric and Imperial functions
- Zero setting allows for comparative measurement
- RS-232 serial port connection for computer interface
- Hardened and tempered stainless steel gauge
- Resolution: 0.01mm (0.0005")
- Range: 0-100mm (0-4")
- Accuracy: +/- 0.02mm (+/- 0.001")
- Battery type: SR44 (1.5V)
- Operating temperature: 0-40°C
- 11mm digits in LCD display

INNER/OUTER 10/40

PART NO. K11040



### DISC BRAKE PAD SPREADER

- Manufactured from 4.4mm thick steel and zinc plated
- Installs brake pads on most domestic and imported cars and light trucks, it compresses the disc brake piston for easy pad installation

INNER/OUTER 6/48

PART NO. 08062



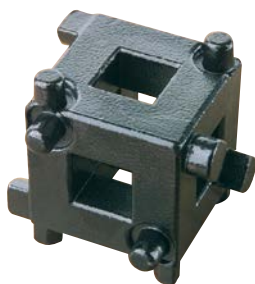
### ONE MAN BRAKE BLEEDER KIT

7 PIECE

- One Man Brake Bleeder Kit used for service of:
- Brake calipers • Drum brakes cylinder • Master cylinders
- 2 X 155mm PVC Hoses • 1 X 480mm PVC Hose
- 1 X Fluid Collection Bottle with extra strong magnet
- 3 X Connectors

INNER/OUTER 6/48

PART NO. K8145



3/8  
SQ. DRIVE

### BRAKE CALIPER WIND BACK CUBE

3/8" SQ. DRIVE

- Manufactured from alloy steel, hardened with blackened finish
- Used for retracting wind back type pistons in brake calipers
- The cube design provides five drive pin configurations to fit most applications
- Suits most vehicles with rear disc brakes
- Use with 3/8" sq. drive tools

INNER/OUTER 12/96

PART NO. 08051



### FLEXIBLE LINE CLAMPS

2 PIECE

- Made from nylon, these Flexible Line Clamps with special radius jaws will not damage internal hose linings
- Ideal for brake & fuel lines

Size	150mm (6") maximum hose outer diameter 14mm
	180mm (7") maximum hose outer diameter 20mm

INNER/OUTER 24/48

PART NO. 04101



### BRAKE ADJUSTING TOOL

- Adjusts "screw" and "star" type adjusters on drum brake vehicles

Overall Length:	180mm (7")
-----------------	------------

INNER/OUTER 12/96

PART NO. 40022

## TORQUE WRENCHES

### DIGITAL TORQUE WRENCH

#### CLICK TYPE 20-200NM

- Standard click type Torque Wrench
- Easy read digital display
- Torque Values: Nm, Ft-lb, Kgf-m
- Torque range 20-200Nm
- 48 tooth ratchet head design
- Digital torque trace feature
- Protective blow mould case
- Quick Release Mechanism

#### Features:

Overall Length: 580mm	Accuracy: +/-2%
Ratchet Head Width: 40mm	Works In Both Directions
Reversible Ratchet Head	Requires 2AAA Batteries (Not Included)
Weight: 1.5kg	Certificate Of Calibration

**INNER/OUTER 2/4**
**PART NO. K8183**

**SETS TORQUE  
IN BOTH  
DIRECTIONS**
**ACCURATE TO  
+/-2%**

### DIGITAL TORQUE WRENCH

#### CLICK TYPE 30-340NM

- Standard click type Torque Wrench
- Easy read digital display
- Torque Values: Nm, Ft-lb, Kgf-m
- Torque Range 30-340Nm
- 48 tooth ratchet head design
- Digital torque trace feature
- Extended handle design
- Protective blow mould case

#### Features:

Overall Length: 650mm	Accuracy: +/-2%
Ratchet Head Width: 40mm	Works In Both Directions
Reversible Ratchet Head	Requires 2AAA Batteries (Not Included)
Weight: 1.62kg	Certificate Of Calibration

**INNER/OUTER 2/4**
**PART NO. K8184**

**SETS TORQUE  
IN BOTH  
DIRECTIONS**
**ACCURATE TO  
+/-2%**

### MICROMETER TORQUE WRENCH

#### 1/4" SQ. DRIVE

Manufactured from nickel chrome plated alloy, 1/4" square drive, with reversible ratchet head. The inch/lb and Nm scale is engraved on the barrel of the wrench. The micrometer type sleeve allows accurate preset torque levels to be set. When torque is reached, the wrench produces an audible click and a release of tension. Contents: 1/4" Drive Ratchet. Packaged in a blow mould case.

#### Features:

Dual scale torque wrench 17.7 - 212.4 Inch/lb, 2.0-24.0 Nm	Easy grip handle
Can be used in the dark, blind spots, in oil, in noisy surroundings and on vibrating machinery	Accuracy: +/- 4%
No pointer or dial to monitor	Supplied with Certificate of Calibration

**INNER/OUTER 5/20**
**PART NO. MTW200I**


### MICROMETER TORQUE WRENCH

#### 3/8" SQ. DRIVE

Manufactured from nickel chrome plated alloy, 3/8" square drive, with reversible ratchet head. The inch/lb and Nm scale is engraved on the barrel of the wrench. The micrometer type sleeve allows accurate preset torque levels to be set. When torque is reached, the wrench produces an audible click and a release of tension. Contents: 3/8" Drive Ratchet. Packaged in a blow mould case.

#### Features:

Dual scale torque wrench 5 - 80 Ft/lb, 6.8 - 108.5 Nm	Easy grip handle
Can be used in the dark, blind spots, in oil, in noisy surroundings & on vibrating machinery	Accuracy: +/- 4%
No pointer or dial to monitor	Supplied with Certificate of Calibration

**INNER/OUTER 4/16**
**PART NO. MTW80F**


### MICROMETER TORQUE WRENCH

#### 1/2" SQ. DRIVE

Manufactured from nickel chrome plated alloy, 1/2" square drive, with reversible ratchet head. The inch/lb and Nm scale is engraved on the barrel of the wrench. The micrometer type sleeve allows accurate preset torque levels to be set. When torque is reached, the wrench produces an audible click and a release of tension. Contents: 1/2" Drive Ratchet. Packaged in a blow mould case.

#### Features:

Dual scale torque wrench 10 - 150 Ft/lb, 13.60 - 203.50Nm	Easy grip handle
Can be used in the dark, blind spots, in oil, in noisy surroundings and on vibrating machinery	Accuracy: +/- 4%
No pointer or dial to monitor	Supplied with Certificate of Calibration

**INNER/OUTER 4/12**
**PART NO. MTW150F**






## DEFLECTING BEAM TORQUE WRENCH

### 1/2" SQ. DRIVE

- Deflecting beam mechanism - no spring
- Sliding scale
- Supplied with certificate of calibration
- Dual signal - audible click and visual
- Protective blow mold case

Range:	20 - 220 Ft/Lb (40 - 300 Nm, 4 - 30 Kg/cm <sup>2</sup> )	Length:	490mm
Accuracy:	± 4% of setting	Weight:	1.8Kg

INNER/OUTER 3/6

PART NO. K8030



### Spare Parts

Part No	
K8030-1	Trip Kit
K8030-2	Wedge Kit
K8030-3	1/2" Square Drive



## DEFLECTING BEAM TORQUE WRENCH

### 3/8" SQ. DRIVE

- Deflecting beam mechanism - no spring
- Sliding scale
- Supplied with certificate of calibration
- Dual signal - audible click and visual
- Protective blow mold case

Range:	7.5-90 Ft/Lb (10-120Nm)	Length:	375mm
Accuracy:	± 4% of setting	Weight:	0.98Kg

INNER/OUTER 3/6

PART NO. K8031



### Spare Parts

Part No	
K8031-1	Trip Kit
K8031-2	Wedge Kit
K8031-3	3/8" Square Drive



## DEFLECTING BEAM TORQUE WRENCH

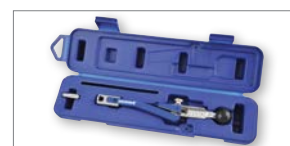
### 1/4" SQ. DRIVE

- Deflecting beam mechanism - no spring
- Sliding scale
- Supplied with certificate of calibration
- Dual signal - audible click and visual
- Protective blow mould case

Range:	50-200 IN/LB (5-25Nm) 50-250 Kg/cm <sup>2</sup>	Length:	210mm
Accuracy:	± 4% of setting	Weight:	0.26kg

INNER/OUTER 3/6

PART NO. K8032



### Spare Parts

Part No	
K8032-1	Trip Kit
K8032-2	Wedge Kit
K8032-3	1/4" Square Drive



## DEFLECTING BEAM TORQUE WRENCH

### 3/4" SQ. DRIVE

- Deflecting beam mechanism - no spring
- Sliding scale
- Supplied with certificate of calibration
- Dual signal - audible click and visual
- Protective blow mold case

Range:	100 - 500 Ft/Lb (150 - 650 Nm, 20 - 65 Kg/cm <sup>2</sup> )	Length:	890mm
Accuracy:	± 4% of setting	Weight:	7.6Kg

INNER/OUTER 3/6

PART NO. K8034



### Spare Parts

Part No	
K8034-1	Trip Kit
K8034-2	Wedge Kit
K8034-3	3/4" Square Drive



## DIGITAL TORQUE ADAPTOR

### 1/2" SQ. DRIVE

- Convert any ratchet into a Torque Wrench • Display range: 40-200Nm (29.5 – 147.6 ft.lb)
- Accuracy: + /- 1% • 5 torque settings (kg-cm kg-m lb-in lb-ft N-m)
- Memory slots record last 50 torque value readings • Both peak and trace settings
- Supplied with certificate of calibration

INNER/OUTER 3/6

PART NO. K8035



## TORQUE SCREWDRIVER

### 1/4" F/HEX

Measuring range:

- 1 - 6 n.Nm • 13.3 - 48.7 in/lb • 1/4" Female hexagon bit holder • Simple torque adjustment without the need of any additional specialist tools • Quick lock to prevent accidental adjustment of set torque • Torque Screwdriver 'slips' when torque is reached removing the possibility of 'over-tightening' • Ergonomic, durable handle • Supplied with certificate of calibration

INNER/OUTER 3/6

PART NO. K5500

## ANGULAR TORQUE GAUGE

### 1/2" SQ. DRIVE

- Made from Chrome Vanadium Steel, chrome plated
- 1/2" Square drive angular torque gauge with adjustable angle scale and locking L-type arm
- Allows correct tensioning of fasteners by degrees of torque
- This tool is required when manufacturers specify a torque setting using a measurement of degrees after the initial torque is set

INNER/OUTER 6/48

PART NO. 08085



## GARAGE STOOLS & CREEPERS



## WORKSHOP STOOL

### GAS LIFT

- 360° swivel mechanism
- ANSI certified smooth rolling castors
- Comfortable, fire proof foam padding
- Commercial grade vinyl

Adjustable Height	460 - 600mm (140mm)
Padded Swivel Seat	Diameter 355mm
Weight	5.3 Kg
Capacity:	150 Kg

INNER/OUTER 3/6

PART NO. K8108



## WORKSHOP STOOL

### HEAVY DUTY

- Patented 360° swivel mechanism
- SGS certified
- Includes removable heavy duty back rest
- Comfortable, fire proof foam padding

Padded Swivel Seat	Diameter 355mm
Padded Back Rest	345 x 185mm
Weight	7.7 Kg
Capacity:	300 Kg

INNER/OUTER 3/6

PART NO. K8109



## PNEUMATIC GARAGE STOOL

- Heavy duty construction - Chrome plated steel
- Foot ring and support ring • Padded adjustable back rest
- Ready to assemble

Adjustable Height	730 - 860mm (130mm)
Padded Swivel Seat	Diameter 350mm
Padded Back Rest	300 x 150mm
Weight	2.55 Kg
Capacity:	150 Kg

INNER/OUTER 3/6

PART NO. K8110

## ALUMINIUM ANODIZED CREEPER

### LIGHT WEIGHT 44"

- 6 extra wide ball bearing nylon castors for fast, effortless movement in any direction
- 75mm (3") castors
- Strong, durable construction
- Fully welded
- Durable anodized coating on frame
- Adjustable headrest with over-stuffed and over-sized padding for extreme comfort for those long stints under the car

Load capacity:	135kg (300lb)
Measurements:	1110mm x 490mm
Weight:	7kg

INNER/OUTER 3/6 **PART NO. K120020**



## 5 WHEEL GARAGE CREEPER

- Heavy duty 5 wheel garage creeper
- Adjustable headrest with stick shift
- Oversized 1" square steel frame
- 3.5" castors with tread
- Rear drop frame for leg comfort
- Cushioned vinyl

Load capacity:	112Kg
Measurements:	1140 x 480 x 135mm
Weight:	12kg

INNER/OUTER 3/6 **PART NO. K8111**



## MECHANIC'S CREEPER

- Heavy duty construction
- 25mm square tubular frame
- Vinyl padded base & headrest
- Heavy duty 100mm (4") wheels
- Powder coated finish
- 110Kg capacity

Measurements:	1020 x 510 x 165mm
Weight:	10kg

INNER/OUTER 3/6 **PART NO. 08010**



## MECHANIC'S CREEPER SEAT

- Added bracing under seat for extra strength
- Heavy duty construction
- Vinyl padded seat
- 65mm (2.5") heavy duty castors
- Packaging: full colour carton
- 130Kg capacity

Measurements:	355 x 470 x 365mm
---------------	-------------------

INNER/OUTER 3/6

**PART NO. 08011**

## DISPOSABLE SEAT COVER ROLL

### 250 PIECE

- Protect you and your customer's seats from stains
- Handy tear-off reel
- Made from tough LDPE material (14 micron)
- Built in base and head rest pockets for universal fitment
- Suits most cars, vans, trucks & 4X4 bucket style seats
- Base pocket 500mm
- Head rest pocket 240mm
- Measurements: 1300 x 800mm
- Single use only



**NEW**

INNER/OUTER 3/6

**PART NO. K8250**



## GENERAL AUTOMOTIVE



### 6 LED MAGNETIC PICK-UP TOOL

- 6 LED (100,000 hrs)
- Magnet lifts up to 1.35Kg
- Extendable from 170 - 680mm (510mm) with flexible tip
- 16 hour run time
- Anodised aluminium casing
- 4 x LR44 lithium batteries (included)



Adjustable Length: 170 - 680mm

INNER/OUTER 12/48

PART NO. K8060



### 5 LED MAGNETIC PICK-UP TOOL

- 5 LED (100,000 hrs)
- Magnet lifts up to 450g
- Extendable from 150 - 520mm (370mm)
- 4 x LR44 Batteries (included)
- Pocket clip
- 20 hour run time
- Anodised aluminium casing



Adjustable Length: 150 - 520mm

INNER/OUTER 12/48

PART NO. K8061



### LED MAGNETIC TELESCOPIC PICK-UP

- Powerful magnet up to 1kg • Long life LED
- Pocket Clip • 3 x LR41 (1.5v) Batteries included



Adjustable Length: 170 - 660mm

INNER/OUTER 10/40

PART NO. K8003



### MAGNETIC TELESCOPIC PICK-UP TOOL

- This tool has a telescopic shaft which houses a powerful magnetic pick up end, making it ideal for retrieving metal objects that are visible but not easily accessible
- Will pick up weights to 300gm



Length: 90mm to 470mm (3.1/2" to 18.1/2")

INNER/OUTER 12/60

PART NO. 70042



### CLAW PICK-UP TOOL

PART NO. WT042

- This useful tool has a plated flexible arm with a claw action pick up end, controlled from the spring loaded grip
- Ideal for retrieving items that are visible but not easily accessible

Flexible arm length: 600mm (24")

INNER/OUTER 12/60



### MAGNETIC TELESCOPIC PICK-UP TOOL

- A pen type, fully extendable pick-up tool, which will pick up items that weigh up to 2kg
- Ideal for retrieval of nuts, screws and metal objects lost in awkward places
- Complete with pocket clip



Length: 140mm to 650mm (5.1/2" to 25.1/2")

INNER/OUTER 12/60

PART NO. 70044



### MAGNETIC TELESCOPIC PICK-UP TOOL

#### FLEXIBLE SHAFT - 560MM (22")

- Chrome plated flexible shaft with heavy duty magnetic tip
- Will pick up weights to 2Kg • Includes plastic handle
- Ideal for the retrieval of nuts, screws & other steel objects lost in awkward places

Length: 560mm (22")

INNER/OUTER 12/60

PART NO. 08033



### MECHANICS STETHOSCOPE

- Insulator on probe allows operator to accurately detect and locate internal engine/bearing noises

Probe length: 290mm (11.1/2")

INNER/OUTER 12/60

PART NO. K080023



## RATCHET HOSE CLAMP TOOL

- Hose clamp pliers make installing and removing flat-typed hose clamps in hidden and hard to reach areas easier
- Services most ring-type or flat-band hose clamps
- The clamps are held open with ratchet locking mechanism
- Special jaws design to access hose clamps in any position

Small Capacity: 0 - 38mm	Large Capacity: 22 - 55mm
INNER/OUTER 10/20	<b>SMALL PART NO. K8075</b>
INNER/OUTER 10/20	<b>LARGE PART NO. K8076</b>



## EXTENSION MIRROR

### TELESCOPIC HANDLE

- Fully extendable extension mirror with fully flexible head and a 40mm diameter mirror to provide good visibility in concealed areas
- Plated finish and comes complete with pocket clip

Length: 180 - 500mm (7" to 20")

INNER/OUTER 10/50

**PART NO. WT045**



## EXTENDABLE INSPECTION MIRROR

### WITH LED LIGHT

- Ergonomic rubber grip handle
- Single CR2016 3V battery (Included)
- Mirror Diameter: 55mm
- Shaft Extends: from 30mm to 720mm

INNER/OUTER 12/48

**PART NO. K8049**



## MULTI PURPOSE CLEANER

The Multi Purpose Cleaning Gun enables quick and efficient:

- High pressure – cooling system flushing
- High pressure – high flow water cleaning
- High pressure – high volume air blowgun
- One hand operation
- Integrated air and water controls for easy use
- Multi-step nozzle suits most radiator and water heater hoses
- Can be used as a air blowgun

### Functions:

- Cooling system flushing • Engine bay washing
- Car and truck washing • Floor-washing
- Air blow gun high flow cleaning all in the palm of your hand

INNER/OUTER 6/12

**PART NO. K8171**



## PRESSURE SPRAYER

### 2 LITRE

- Plunger pump • Viton seals • Brass nozzle
- Trigger lock • HDPE tank
- Ideal for Non-corrosive degreaser, tyre shine, window spray etc

Maximum flow rate	250ml/min
Maximum pressure	2.5 - 3.0 Bar (36 - 43 PSI)

INNER/OUTER 6/12

**PART NO. K16012**



## MAGNETIC LIGHT & PULL UP TOOL

### 2 IN 1

- Manufactured from aluminium
- 3 x Bright White LED's: 18 Lumen /1 LED
- Telescopic Length: 175 - 550mm
- Heavy duty magnetic base 4.1kg adhesion power
- Able to pick up to 2.3 kg from the head
- 2 x 4 # LR44 disc batteries included
- Push button /off switch • Pen clip



INNER/OUTER 12/60

**PART NO. K8062**

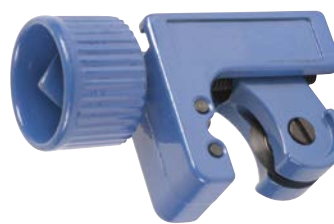


## BRAKE FLUID TESTER

- The tester can be used as a digital brake fluid tester suitable for determining brake fluid quality
- Developed for professional use in automotive repair shops and in servicing
- Quality is tested and indicated on five LED's in terms of per cent of moisture in the brake fluid
- Suits DOT 3 and DOT 4 brake fluid

INNER/OUTER 6/24

PART NO. K8085



## MINI TUBE CUTTER

- Powder coated carbon steel

Range:	3mm - 16mm (1/8" - 5/8") outer diameter
Overall Length:	50mm

INNER/OUTER 12/48

PART NO. K080015



## TOW BALL SPANNER

- Suit 50mm tow Balls with 33mm or 24mm nuts
- Suits 16mm bolts
- Suits 8mm to 12mm D shackle
- Carbon steel with heat treatment

INNER/OUTER 12/24

PART NO. K8152



## TANK SENDER SPANNER SET

- Fuel tank sender spanner set (adjustable)
- For removing and replacing the plastic retaining ring on the sender unit on fuel tanks
- Universal application
- Tank sender spanner 75-160 mm
- Drive 24mm

INNER/OUTER 6/36

PART NO. K8137



## 5 POINT TAMPERPROOF BIT SET

### 11 PIECE

- Suits late model vehicles
- 1/4" Dr. tamper resistant TX-Plus Bit Set
- 9 - TX: T10, T15, T20, T25, T27, T30, T40, T45, T50
- 1 - 1/4" Drive, magnetic bit holder
- 1 - 1/4" Sq. Drive x 1/4" hex bit adapter

INNER/OUTER 12/24

PART NO. K8130



## HOSE PINCHER SET

### 2 PIECE

- To pinch vacuum lines, fuel lines and other hoses without damage

Maximum outer diameter hose - 22mm

INNER/OUTER 12/48

PART NO. K080019



## UNIVERSAL CLUTCH ALIGNING KIT

### 7 PIECE

- This revolutionary tool allows the clutch and pressure plate to be assembled together, then installed in the vehicle as a preassembled unit
- Fits most vehicles up to 5000kg (excludes double plate clutches)
- Lightweight and easy to use

INNER/OUTER 12/48

PART NO. K080014



## STUD EXTRACTOR

- This stud extractor suits fasteners from 6mm (1/4") to 19mm (3/4")
- The body and socket are made from carbon steel, the gear is made from Chrome Molybdenum
- The body, socket and gear are all hardened and tempered

Body Diameter:	55mm (2")
Overall Length:	65mm (2.1/2")

INNER/OUTER 6/24

PART NO. SR101



## TUBE BENDER

### HEAVY DUTY

- Vinyl grip 160mm (6.1/4") handle length
- Designed to fit popular tubing: 5mm (3/16"), 6mm (1/4"), 8mm (5/16"), 10mm (3/8") O.D.
- For use on copper, aluminium, stainless steel and other metal pipes without kinking or flattening

INNER/OUTER 6/24

PART NO. 08082





## FEELER GAUGE

### 32 BLADE

- Overall length: 105mm (4") • Steel plate - chrome plated
- This gauge is used to measure and reproduce very small but accurate gaps, when adjusting tappets on cars, motorbikes, mowers etc.
- Refer manufacturers handbook for specific measurements

#### Dual marked blade sizes

**Metric (mm):** 0.03, 0.04, 0.05, 0.06, 0.07, 0.08, 0.09, 0.10, 0.13, 0.15, 0.18, 0.20, 0.23, 0.25, 0.28, 0.30, 0.35, 0.38, 0.40, 0.45, 0.50, 0.55, 0.60, 0.63, 0.65, 0.70, 0.75, 0.80, 0.85, 0.90, 1.00mm

**Imperial (inch):** 0.001, 0.0015, 0.002, 0.0025, 0.0028, 0.003, 0.0035, 0.004, 0.005, 0.006, 0.007, 0.008, 0.009, 0.010, 0.011, 0.012, 0.013, 0.014, 0.015, 0.016, 0.018, 0.020, 0.022, 0.024, 0.025, 0.026, 0.028, 0.030, 0.032, 0.034, 0.035, 0.040"

INNER/OUTER 6/60

PART NO. 412092



## OFFSET FEELER GAUGE

### 12 BLADE

- Metric and imperial
- Overall length: 100mm (4")
- Steel plate - chrome plated

#### Sizes

**Metric (mm):** 0.203, 0.254, 0.305, 0.330, 0.356, 0.381, 0.406, 0.457, 0.483, 0.508, 0.635, 0.660mm

**Imperial (inch):** 0.008, 0.010, 0.012, 0.013, 0.014, 0.015, 0.016, 0.018, 0.019, 0.020, 0.025, 0.026"

INNER/OUTER 12/60

PART NO. K080007



## UNIVERSAL CLUTCH ALIGNING KIT

### 17 PIECE

Manufactured from carbon steel and blackened finish, this tool is used for fast accurate alignment of the flywheel pilot hole & clutch centre plate for gearbox re-assembly to engine. Steel bushes for use on popular Audi, Chrysler, Citroen, Daihatsu, Fiat, Ford, Holden, Honda, Mazda, Mitsubishi, Nissan, Peugeot, Renault, Rover, Saab, Toyota, Volkswagen and Volvo vehicles (excludes double plate clutches) • Blow mould protective case

Contents:	1 x Spindle, size of handle 150mm (L)
	8 x pilot hole/spigot bush adaptors
	8 x clutch plate centre adaptors

INNER/OUTER 5/20

PART NO. 08056



## SEAL PULLER

### 310MM (13")

- Manufactured from medium carbon steel, zinc plated round shank and black finished blade
- The universal seal puller is for use on rubber 'O' rings, oil and grease seals
- Particularly useful for commercial vehicle applications
- The two tip sizes provide leverage in seal housings

INNER/OUTER 6/48

PART NO. 08060



## PARTS WASHER BRUSH

- Large bristle head with plastic wood grain handle
- Convenient hanger hole

Overall Length:	260mm (10")
Brush Diameter:	30mm (1.1/4")

INNER/OUTER 12/48

PART NO. K080018



## GASKET SCRAPER

- For cleaning cylinder heads and removing old sealant and carbon deposits

Overall Length:	280mm (11")
Blade Width:	25mm

INNER/OUTER 12/48

PART NO. K080016



Torque Wrench Not Included



## MECHANIC'S GLOVES

### 1 PAIR

- Specially designed for the professional mechanic
- Guards your hands against heat, cold, cuts and abrasions
- Padded palm area for extra protection against pneumatic tool vibration
- The backing material is a lightweight, breathable stretch nylon
- The palm area and fingers are synthetic leather (Clarino®)
- Reinforced and double stitched for extra durability
- Machine washable in cold water

Part No	Size
K080024	Medium
K080025	Large
K080026	Extra Large

INNER/OUTER 12/48

## DRAIN PAN 15L

- Suitable for multiple oil changes
- Feature anti splash lip that contains fluid when carrying or pouring
- Enclosed pouring spout makes easy work of returning oil / fluid to recycling container
- Removeable screw off cap for easy disposal and transport of fluids

INNER/OUTER 6/12

PART NO. K8400



## FEATURES

- Perfect for safely storing nuts, bolts, screws & small metallic objects
- Powerful single & double magnets
- Durable rubber coating over magnet to prevent damage to surfaces
- Can be used vertically, horizontally or upside down



## MAGNETIC PARTS TRAY

- 150mm (5.3/4") round stainless steel tray
- Powerful single magnet

INNER/OUTER 10/30

PART NO. K8070



## TWIN MAGNETIC PARTS TRAY

- Powerful double magnets

INNER/OUTER 5/20

PART NO. K8071



## TRIPLE MAGNETIC PARTS TRAY

- Rectangle stainless steel tray 360 x 160mm
- Powerful triple magnets

INNER/OUTER 6/12

PART NO. K8072



## QUAD MAGNETIC PARTS TRAY

- Stainless steel tray 290 x 270mm
- 4 powerful magnets

INNER/OUTER 3/6

PART NO. K8073

## SUSPENSION



### TIE ROD END & PITMAN ARM PULLER

- Forged alloy steel • Heat treated centre screw
- Pulling Capacity 0.5 Tonne

Jaw Opening Width:	27mm (1.1/16")
Overall Length:	54mm (2.1/8")

INNER/OUTER 12/48 **PART NO. 08081**



### COIL SPRING COMPRESSOR SET

2 PIECE

- Universal fitting
- Safe and easy way to compress coil springs
- Two jaw type
- Material: pressed steel jaws with powder coated and screw shaft, black finished

Total Length:	31.5cm
Capacity:	28.50cm

INNER/OUTER 10/20 **PART NO. K8125**



### BATTERY POST/TERMINAL CLEANER

- Ideal for removing dirt, grime and corrosion from battery posts and terminals
- External brush for cleaning battery posts
- Internal brush for cleaning battery terminals

INNER/OUTER 12/48 **PART NO. K8150**

## BODY



### SLIDE HAMMER KIT (5LBS)

9 PIECE

<b>Includes:</b>	1 x tapered screw
1 x small flat hook	1 x small round hook
1 x large flat hook	1 x large round hook
1 x screw holder	1 x slide hammer - overall length: 530mm (21")
1 x self tapping screw	1 x adaptor

INNER/OUTER 3/6

**PART NO. 08049**



### PANEL REMOVER SET

5 PIECE

- Specially designed slim profile tools • Impact resistant high quality nylon that won't scratch bodywork • Use to remove small fascias from dashboards, air vents, door panels, door locks, electronic seat controls etc • Double ended • Light weight and easy to use

1 x Straight Remover	1 x Pull Type Remover
1 x Handy Remover	1 x Wide Type Remover
1 x Narrow Type Remover	

INNER/OUTER 6/12

**PART NO. K8147**



### SLIDE HAMMER & PULLER KIT

17 PIECE

- Designed for removal of front & rear hubs, bearing oil seal bushes and various types of axles
- Includes components to build the sliding hammer for two and three leg internal and external puller applications

1 x 23" Tee bar handle	1 x Axle puller
1 x 4.8 Lbs (2,200 gm) hammer	1 x Dent puller
3 x Nut & bolt for gear puller use	1 x Screw
1 x Locking pliers adapter	3 x Puller legs
1 x Nut for puller use	1 x Hook
1 x 2-Jaw gear puller head (internal & external)	
1 x 3-Jaw gear puller head (internal & external)	

INNER/OUTER 3/6

**PART NO. K8156**

### FENDER COVER

- Protect your vehicle from marks and scratches
- Durable vinyl material
- Rubberised, non-slip, scratch resistant backing for extra stability

Size: 760mm x 600mm

**PART NO. 08002**

INNER/OUTER 4/16



## WHEELS & TYRES



### FRONT AXLE NUT SOCKETS

- Deep single hex impact socket 1/2" Sq. Drive
- Overall length: 90mm (3.1/2")
- Manufactured from chrome molybdenum with heat treated black finish

Part No	Size
K080011	30mm (1.3/16")
K080012	32mm (1.17/64")
K080013	36mm (1.27/64")

INNER/OUTER 1/2/48



### HUB NUT SOCKET

54MM

- 1/2" DR thin wall, high strength front hub nut socket
- 6 point socket: perfect for 4WD front hub nuts on most popular 4WD • See website for fitment guide

INNER/OUTER 1/24

PART NO. K8254



### HUB NUT SOCKET

55MM

- 1/2" Dr thin wall, high strength front hub nut socket
- 6 point socket: perfect for 4WD front hub nuts on most popular 4WD • See website for fitment guide

INNER/OUTER 1/24

PART NO. K8255

## SUPATool - AUTOMOTIVE



### BALL JOINT SEPARATOR & TIE END SEPARATOR

- Made from a single piece of drop forged alloy steel • Zinc plated to protect from rust • Heat treated to withstand hard usage

Part No			
PART NO. 2208	Ball Joint Separator	Length 300mm (12")	Opening 23mm (15/16")
PART NO. 2209	Tie Rod End Separator	Length 400mm (16")	Opening 17mm (21/32")

INNER/OUTER 5/20



### WHEEL BRACE - 4 WAY

- Heavy duty forged four way wheel nut wrench
- Silver finish for corrosion protection

Sizes 17, 19, 22mm, 13/16"

INNER/OUTER 20/60

PART NO. 1430



### EXTENDING WHEEL NUT WRENCH

- Telescopic handle • Handle length: 285mm

Sizes 17 & 19mm, 21 & 23mm

INNER/OUTER 6/24

PART NO. S080013



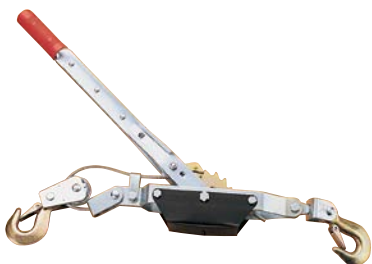
### COIL RING COMPRESSOR

- Two jaw type, ductile cast iron jaw
- Easily operated with 21mm spanner or socket

Length 200mm (8")

INNER/OUTER 10/40

PART NO. 2203



### HAND PULLER

2 TONNE

- Ratcheting style hand puller capable of 2000kg
- Capacity for varied uses including pulling, securing and tightening

INNER/OUTER 4/24

PART NO. 2230



### HARMONIC BALANCER PULLER

13 PIECE

- Universal fitting 13pce forged alloy steel, zinc plated
- Suitable for most vehicles

INNER/OUTER 10/20

PART NO. 2201



### BALL JOINT REMOVER

HEAVY DUTY LEVER TYPE

Forged carbon body ball joint separator with steel bolt

Jaw Opening:	20mm (3/4")
Throat Depth:	32mm (1-1/4")
Max. Opening Capacity:	35mm (1-1/4")

INNER/OUTER 4/16

PART NO. 2210



## LISLE AUTOMOTIVE RANGE

Celebrating over 110 years, the family owned and operated 'LISLE' was founded in 1903 with the majority of its products still manufactured in the United States.

'LISLE' specialty automotive tools are specifically designed for the trade and automotive market. 'LISLE's' range of specialty automotive tools, mechanics creepers and lubrication & tyre products, offer mechanics and serious motoring enthusiasts a range of quality tools designed for specific purposes.

With over 650 products available 'LISLE' is the preferred Automotive Specialist brand in the trade.



## THE INNOVATOR IN SPECIALTY TOOLS SINCE 1903

Lisle specialty tools, mechanic's creepers, lubrication & tyre products are the preferred line among automotive parts & accessory distributors because Lisle manufactures quality products that are priced right.

# Lisle®



## BRAKES

### BRAKE HONES

Controlled pressure makes it possible to polish or hone with just one stone grit. Square ends of stones hone to the end in step-cut and blind-end cylinders. 240 grit stones are 1-1/8" long on 10000 & 10500. Flexible driver provides excellent stability.

#### 3 STONE - 240 GRIT

Range - 27/32" to 2" (21.4 - 50.8mm)

PART NO. 10000

#### 2 STONE - 240 GRIT

Range - 11/16" to 2-1/2" (17.5 - 63.5mm)

PART NO. 10500

### REPLACEMENT STONES

- To suit Brake Hone (Part No. 10000)

PART NO. 10050

### REPLACEMENT STONES

- To suit Brake Hone (Part No. 10500)

PART NO. 10550



### DISC BRAKE HONE

Special abrasive pads polish the cylinder without cutting. Controlled pressure, three abrasives and flexible driver give good stability and speed. Stones are 1" long (25.4mm)

#### 3 STONE - 240 GRIT

Range - 1 1/2" to 3 1/8" Disc Brake Cylinders (38.1 to 79.3mm)

PART NO. 10400

### REPLACEMENT STONES

- To suit Brake Hone (Part No. 10400)

PART NO. 10490



### VACUUM TESTING / BRAKE BLEEDING KIT

Comes with 75000 Vacuum Pump and Complete Accessories for Vacuum Testing and Brake Bleeding

Pump is made of one-piece zinc die cast material for durability and improved performance. Order 75400 repair kit to replace worn out o-rings, seals and valves.

PART NO. 75000



### 3/16" TUBING BENDER PLIERS

Bends 3/16" Brake Lines Without Kinking or Flattening, Especially in Tight Spots.

Bend all types of 3/16" (4.76mm) OD tubing. Unique head design bends tubing without collapsing the tube. Won't mark tube surface. The handles are more than 3-1/4" (82.55mm) apart for proper leverage when handling even steel tubing.

PART NO. 44150



### COMBINATION BRAKE LINING THICKNESS GAUGE SET

The 9 Piece Manual Brake Gauge Set Allows Brake Pad Wear to be Accurately and Consistently Measured without Guessing.

Designed to check both straight on or at a 90° angle to the rotor with offset tips so the gauges can be used without removing the wheel or caliper assembly on many applications. Brake lining gauges identify thickness levels for brake lining inspection. Made from durable, flexible acetal. The gauges are colour coded to match SAE or Metric recommendations for brake pad replacement.

PART NO. 81850

## BRAKES

**BRAKE SPRING PLIERS**

**Double ended tool for removing and installing brake springs**

Use plier tips to stretch brake spring. Handle ends remove & install spring over anchor post. Handle length is 12 3/4" (323.85mm)

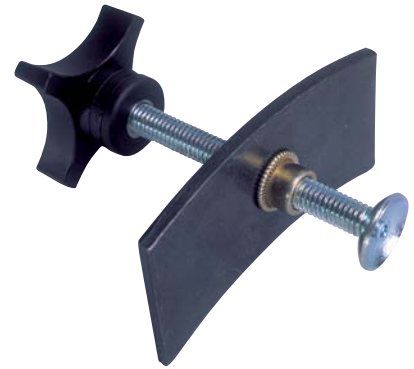
PART NO. 11260

**BRAKE BLEEDING KIT**

**Simple to Use**

Everything needed to quickly bleed brakes with no mess. Plastic bottle collects discharged fluid. Three separate adaptors fit the common bleeder screws

PART NO. 19200

**DISC BRAKE PAD SPREADER**

**For Installing Pads on Most Domestic and Import Cars and Light Trucks**

Makes changing pads an easy job. Tool compresses disc brake piston for easy pad installation

PART NO. 24400

**QUICK QUAD PAD SPREADER**

**A Quick Way to Spread Brake Pads and Compress Disc Brake Pistons for Pad Replacement on Single, Double & Quad Piston Calipers**

Simultaneously compress all four pistons on quad piston applications. Can be used while caliper is on the vehicle or hanging free. Makes brake pad replacement a quick and easy job.

PART NO. 29100

**SPEEDY BRAKE PAD SPREADER**

**Compresses Brake Pistons in Seconds**

Squeeze the handle and the fast acting plunger compresses the disc brake piston in seconds, making brake pad replacement an easy job.

PART NO. 24300



Part No. 24300

Part No. 25750

**DUAL PISTON BRAKE PAD SPREADER**

**Compresses Brake Pistons in Seconds**

Squeeze the handle until the plunger contracts the inboard brake pad, simultaneously compressing dual brake pistons, making dual piston pad replacement an easy job.

PART NO. 25750



## BRAKES



### UNIVERSAL EMERGENCY BRAKE TOOL

Allows technicians to compress the emergency brake cable spring with one hand. Keeps one hand free for brake shoe arm or lever replacement.

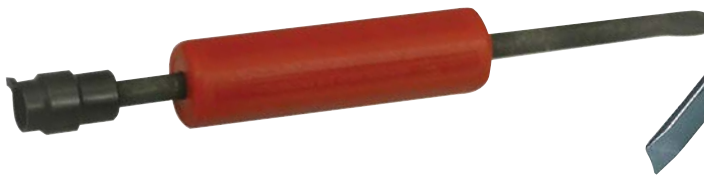
PART NO. 44210



### EMERGENCY BRAKE CABLE RELEASE TOOL

Quickly and easily pushes the emergency brake cable out of the cable connector for rear brake service or replacement. The tool can be used on many domestic and import vehicles with an emergency brake cable at the rear wheels. Works on drum brake applications as well as vehicles with rear disc brakes.

PART NO. 44220



### BRAKE SPRING TOOL

**Makes it Easy to Remove and Replace Springs**  
A spring tool for removing and replacing brake return springs that are set over a post. Heat-treated end fitting engages hook and removes it from the post when the tool is turned clockwise. "Shoe horn" design on the other end makes it easy to slip the spring back over the post. Large handle gives good grip and easy operation.

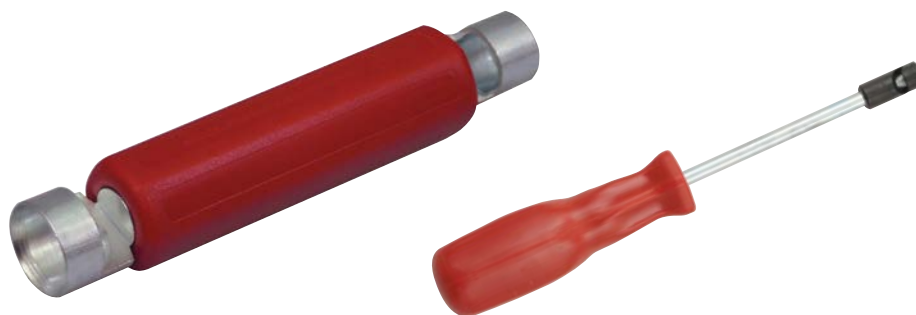
PART NO. 46750



### BRAKE ADJUSTMENT TOOL

**Speeds Star Wheel Adjusting**  
Insert tool through slot in backing plate. Different angle at each end adapts to various makes and models.

PART NO. 50700



### BRAKE SPRING WASHER TOOL

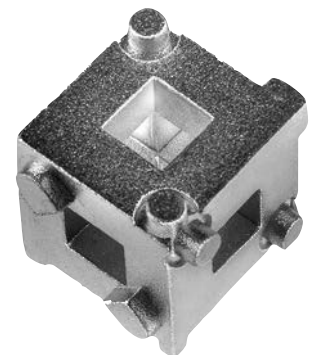
**Fits Both Large and Small Washers**  
Troublesome brake shoe retaining spring washers can now be easily removed and then reinstalled. Wide "window" allows better visibility to align the nail and washer slot.

PART NO. 47400

### BRAKE SPRING TOOL

**Designed for Import Car Brake Return Springs**  
This tool removes and installs import brake return springs. Also works on domestic brakes that don't use an anchor pin. Engage brake spring in tool head. Turn handle to lock on spring. Expand spring to install or remove.

PART NO. 45100



### DISC BRAKE PISTON TOOL

**Rotates Piston Back Into the Caliper When Replacing Pads**  
A sixth side has been added and one side has been modified. This tool now fits more applications. Used on vehicles with four wheel disc brakes. Fits most domestic and some import applications. Push and turn tool to rotate piston into caliper. Use with 3/8" drive ratchet and extension.

PART NO. 28600

## BRUSHES

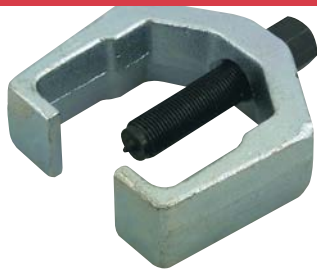
### PARTS CLEANING BRUSH

- Removes dirt and grease from motors, machinery and metal parts
- Polypropylene bristles hold up under repeated use in cleaning solvents

PART NO. 14000



## SUSPENSION



## PITMAN ARM PULLER

**Heavy Duty Puller Works on Most Cars and Light Trucks**  
Designed to work on even the most stubborn Pitman arm pulling jobs. Position puller jaws over Pitman arm and turn center screw to free Pitman arm. Puller body is drop-forged and heat-treated for strength.

PART NO. 41900



## STEPPED PICKLE FORK KIT

5 PIECE

**Step Design on the Forks keeps the tool from bouncing back when separating Ball Joints, Steering Dampeners, Tie Rods, Pitman arms and other applications**

Includes five forks: 11/16", 15/16", 1-1/8", 1-7/16" and 1-5/8". The forks are threaded to interchange with either the handle for hammering or the pneumatic driver. The forks are heavy-duty forgings and the handles are heat-treated alloy steel. The fork steps can be sharpened if needed.

PART NO. 41440



## STRUT TOOL

Safe - Universal - Inexpensive

This is an inexpensive, but super safe strut spring compressor. Fits all strut spring sizes, import and domestic. Heavy duty clamps and bolts securely hold spring during operation.

PART NO. 62300



## SHOCK ABSORBER TOOL

**For Removing and Installing Shock Nuts**

Fits most domestic models and some Ford OEM shock nuts. Place stem socket over shock stem. Hex nut socket fits the nut. Hold one, turn the other for removal. 1 End 9/16" (14.20mm) and the other end .591 (15.08mm)

PART NO. 20400



## STEPPED TIE ROD SEPARATOR

PART NO. 18520

## STEPPED BALL JOINT SEPARATOR

PART NO. 18530

**Step Design Helps Keep Tool from Bouncing Back** 18520 is used to replace worn out tie rods and to separate shock absorber links. The tine opening is 11/16" (17.46mm). 18530 is used to replace worn out ball joints and to remove CV drive shafts on FWD vehicles. The tine opening is 15/16" (23.81mm). These heavy-duty tools are drop forged and heat-treated for long use. Steps can be sharpened if needed.

## TRUCK ANCHOR PIN BUSHING DRIVER

**Also Removes Truck Leaf Spring Bushings**

Pneumatic bushing driver set removes and installs truck and trailer anchor pin bushings and stuck anchor pins. Drive the bushing out with the small cone. Use the larger cone to install bushing to the proper depth.

PART NO. 28890



## BEARING

HANDY PACKER®  
BEARING PACKER

**Quickly Flushes Out Old Grease and Repacks Bearings with Less Mess**

The Handy Packer works on bearings up to 3-1/2" (88.9mm) O.D. The grease stays in the tool cavity, not on your hands. To pack a bearing, place the bearing on the piston. Press down on the cap until the old grease is forced out and the new grease shows on top of the bearing.

PART NO. 34550



## ADJUSTABLE SEAL PULLER

Head Adjusts to 5 Positions

Two hook sizes easily remove most oil and grease seals. Where clearance is a problem, remove the pin to reposition the head. The adjustable head works great on front wheel drive transaxles. Also works on front crankshaft seals without removing the radiator.

PART NO. 56650



## SEAL PULLER

For Oil and Grease Seals

Simply insert the tip of the tool behind the oil or grease seal, press and pull. Leverage works for you. Two size tips reach in and fit nearly all seal applications.

PART NO. 56750



## LIMITED ACCESS SEAL PULLER

**Use With 3/8" Drive for Hard-to-reach Oil and Grease Seals**  
Simply insert hook behind seal and pull. Two hook sizes to fit most oil and grease seals. Can also be used with a breaker bar for extra reach or leverage. If the puller tips wear, sharpen on a grinding wheel.

PART NO. 56920



## UNIVERSAL BEARING PACKER

Fast, Efficient, Thorough

Simply place the bearing between the plastic cones, tighten, and apply grease through the fitting on the end of the threaded shaft. Forces out old grease and evenly injects fresh grease. Cone diameter is 4-1/2" (114.3mm).

PART NO. 62520

## 4WD

### CV JOINT BANDING TOOL

**For All Band-It® and Band-It Jr.® Style Clamps**

Works on all CV joints using the Band-It or Band-It Jr. type boot bands. Use 5/8" socket or wrench to wind and crimp new band on boot. Tool is easily disengaged from the band after the band is tightened.

PART NO. 30950



## EXHAUST



### TAILPIPE EXPANDER

Removes clamp grooves and rounds out pipes. Practical, rugged tools that make easy work of a tough job. Two sizes fit most pipes: **32500** - 1-5/8" to 2-7/16" (41.3mm - 61.9mm) and the **32750** - 2-3/8" to 3-1/4" (60.3mm - 82.5mm).

PART NO. 32500

PART NO. 32750

### PIPE STRETCHER KIT

**Stretches Pipe up to 4-1/4" (107.95mm) Including Stainless Steel**

Use with an impact wrench to quickly stretch pipes.

Collet sets expand pipes from 1-5/8" to 4-1/4".

The tool can be used on the vehicle. The pipe stretcher kit is a convenient, inexpensive alternative to hydraulic pipe expanders. Comes in a molded storage case.

Expands all types of exhaust pipe, including stainless steel, from 1-5/8" to 4-1/4" (41.3mm - 107.95mm) in size.

PART NO. 17350



## ENGINE



### PINION BEARING RACE DRIVER SET

**Set Includes 8 Drivers for Driving Inner and Outer Pinion Bearing Races**

Use the extended, two-piece handle for driving rear pinion bearing races. A pneumatic handle is also included for use with an air hammer. Sizes: 2 11/16" 2 27/32", 2 7/8", 3", 3 1/4", 3 1/2", 3 3/4", 4 1/8". (68.3, 72.2, 73.03, 76.2, 82.5, 88.9, 95.3, 104.8mm)

PART NO. 59400



### HEAVY DUTY BEARING RACE & SEAL DRIVER SET

**Fits Most 18 wheel semi trailers and some medium duty trucks**

Use the tapered driver side for bearing races and the flat side for seals. Includes six drivers and handle extension for driving bearing races and seals on hubs with deep brake drums without removing the drums. Driver sizes: 3-43/64", 4-7/8", 4-13/16", 5-1/2", 5-25/32", and 6". (93.3, 123.9, 122.2, 139.7, 146.8, 152.4mm)

PART NO. 61900



### BEARING RACE & SEAL DRIVER MASTER SET

**Makes it easier to insert wheel bearing race and seals without damage to race and axle housing**

This master set includes nine drivers to fit most common wheel bearings. Turn discs over to drive seals. In convenient clam shell for storage.

PART NO. 12980



### OIL PAN PLUG RETHREADING KIT

**Removes damaged thread and taps a New oversize thread**

This set includes a piloted drill, spring-loaded tapping tool and 5 magnetic drain plugs.

The unique tapping tool ensures the new thread will be perpendicular to the gasket surface to prevent leakage. Works on soft steel and aluminium oil pans with 1/2", 12mm & 14mm threads. Can be used on the vehicle when room permits. 58650 Plugs & Gaskets (Set of 5) 58880 Piloted Drill Assembly 58900 Tap

PART NO. 58850



### VALVE KEEPER REMOVER & INSTALLER KIT

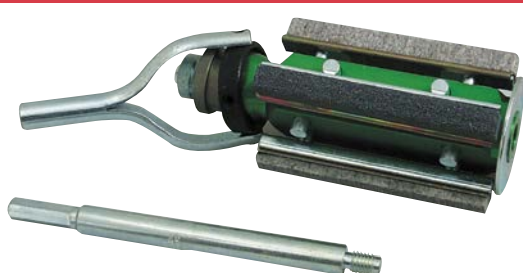
**Quickly Removes and Installs Valve Keepers on most overhead valve Engines with Valve Stems >From 4.5 to 7.5mm and 5/16" to 3/8"**

Makes valve component disassembly and reassembly fast and easy. Push or tap tool with a hammer to remove valve keepers. Magnet in tool body captures keepers for quick removal and valve disassembly. To install keepers, load in retainer on valve stem, then push or tap handle to install. Can be used on the car or bench. New smaller size works on Toyota four cylinder and Chrysler New World Engine applications.

PART NO. 36050



## ENGINE



## ENGINE CYLINDER HONE

## Best by Far - Yet Competitively Priced

Micrometer head assures accuracy in feeding. Expands quickly to cylinder size with fast action rack and pinion. Bottom guard plate helps prevent stones from accidentally hitting the crankshaft. Universal joint action makes grinding of back cylinder easy.

Clip-on stones and wipers are easily changed in a few seconds. Stones are available in five grits. Use with heavy-duty 1/2" drill. Standard range 3" to 4 1/4". Big range (2 3/4" - 10 1/4") with additional rack sets and stone sets. Long 5" stones cut faster, more accurately.

Includes the following: Cylinder hone body with 1 set of 15540 standard range rack (range is 3" to 4 1/4"). 1 set each of 15500 coarse stones and 15510 medium stones, cleaning brush and dressing paddle in a sturdy storage case.

PART NO. 15000

Cylinder Size Range	Rack Set Part No. Weight	Stone & Wiper Set Part Numbers				Special Hard Bond for Steel 150 Grit
		80 Grit	180 Grit	280 Grit	500 Grit	
2 3/4" - 3 3/4" 69.8-95mm	15550 1lb. (453.6grams)	15690 *15740	15690	15700	-----	-----
3"-4 1/4" 76.2- 108mm	15540 1lb. 2oz. (510.3grams)	15500	15510	15520	15990	15490
4"-6 1/4" 100-158mm	15530 1 lb. 6oz. (623.7grams)	15500	15510	15520	15990	15490
6 1/8"-10 1/4" 155-260mm	15560 1lb. 14oz. (850.5grams)	15500	15510	15520	15990	15490

\*For Nikasil Cylinders

## GRIT STONE

Part No	180 Grit
15500	Replacement Engine Cylinder Hone for 15000
15510	Replacement Engine Cylinder Hone for 15000

## SMALL CYLINDER HONE

## For 1-3/4" to 2-3/4" (44.5 - 69.9mm) Cylinders

Precision built for small cylinders. Stones are 3-1/2" long, assuring unusual accuracy. Stones cover full range, are easily changed, and available in four grits. Comes complete with 16410, 16420 and 16430 medium grit stone sets in sturdy storage case. Stones for Nikasil cylinders available. See chart.

Cylinder Size Range	Stone & Wiper Set Part Numbers			
	80 Grit	180 Grit	280 Grit	For Alum.
1.75" - 2.20" 44.5 - 55.9mm	16440	16410 *16570	16380	16470
2.05" - 2.50" 52 - 63.5mm	16450	16420 *16580	16390	16480
2.35" - 2.75" 59.6 - 69.9mm	16460	16430 *16590	16400	16490

\*For Nikasil Cylinders

PART NO. 16000



## STONE-TYPE GLAZE BREAKER

## Full 2" to 7" Range (50.8 - 177.8mm)

Controlled pressure assures positive, adjustable contact through full range. Operates with any electric drill. Furnished with 3" long 220 grit stones, see below for other grits.

Adjustable stop collar permits quick selection of two range settings, from 2" to 4" and from 4" to 7". Stone arms are easily compressed to eliminate cylinder scratches.

## Replacement Stones available

220 grit - Part No. 23520

240 grit - Part No. 23530

320 grit - Part No. 23540

PART NO. 23500



## RIDGE REAMER

## Big Range Scraper Action

Rollers assure easy turning in cylinder. Exclusive stabilizer spring allows operator to take selective cut to minimize chatter. Spring-loaded carbide cutter follows contour of cylinder. Complete ridge removed in just a few easy turns. Offset jaw guides assure rigidity throughout the range.

PART NO. 36500

## ENGINE

### RING COMPRESSORS

#### Lisle Spring Clutch Eliminates Ratchet Problems

The Lisle spring clutch assures a proper fit on the piston and a positive locking action

18500	Range 1-1/2" to 3" (38.1-76.2mm)
19500	Range 2-1/8" to 5" (Height 3-1/2")
20500	Range 3-1/2" to 7" (Height 3-1/2")
21000	Range 3-1/2" to 7" (Height 7")
21500	Range 7" to 10" (Height 7")



### STRETCH BELT REMOVER / INSTALLER

Combination Removal and Installation Tool for most Stretch Belt Applications found on many Accessory Drive Systems

Unique magnetic faces hold the tool in place on the pulley. Helps prevent damage to belt or pulley during removal or installation. Compact, one-piece tool can be used on the front or back side of the pulley. 2pc remove/install

PART NO. 59370

### COMBUSTION LEAK DETECTOR

#### Quickly Pinpoints Combustion Leaks

Checks for combustion leaks caused by bad head gaskets, cracked blocks, and cracked or warped heads. Fluid changes from blue to yellow when exposed to combustion gases from the radiator. Connect the hose to any vehicle vacuum line. Place tapered end of tool into radiator opening. With the engine running, the vehicle vacuum or the vacuum pump draws vapors through the indicating fluid for testing.

Replacement Fluid	Part No 75630
Replacement Fluid	Part No 75730 (Diesel)



\*Includes Fluid

PART NO. 75500



### WRINKLE BAND RING COMPRESSOR

#### 4 Ways Better!

1. LOW FRICTION! Wrinkle Band cuts friction in half. Rings slide in easily. 2. WRINKLE BAND! Can't slip down into cylinder. 3. CAM OPERATED! Set adjustment screw just once for entire set of pistons. 4. FASTER! Insert a full set of pistons in half the time, with half the work!

PART NO. 21700



### TAKE-APART RING COMPRESSOR

The 19000 combines Lisle spring clutch with take-apart feature necessary for Volkswagens, motorcycles, outboard motors, etc. Quick release makes it easy to remove from connecting rod. Can be used on conventional engines with narrow ring spacing

PART NO. 19000



### PISTON RING INSTALLER

#### Save by Reducing Ring Breakage

Tapered jaws to remove and install most passenger car and light truck rings from 3/64" to 1/4" (1.2 - 6.3mm).

PART NO. 33500

### RING GROOVE CLEANER

#### Comes with two Easy-To-Set cutter wheels

Heavy coil spring holds cutter in groove for fast removal of carbon. Tool comes with standard 24020 cutter blade sizes: 5/64", 3/32", 1/8", 5/32", 3/16" and special 24350 cutter blade with sizes: 1.5mm, 1/16", 1.75mm, 2mm, and 1/4". Handles pistons 2-3/4" to 5" diameter. 24270 metric cutter wheel is available with 2mm, 2.5mm, 3mm, 4mm and 5mm

PART NO. 24000



## ENGINE

**TORQUE ANGLE METER****For All Torque-to-Yield Fastener Applications**

Commonly used for tightening head bolts and other bolts where a torque angle is required. Use with 1/2" drive.

PART NO. 28100

**VALVE SPRING COMPRESSOR****An "ON THE CAR" Tool**

Makes compressing the spring and removing the keepers a simple job. No need to remove the head. Adjustable cam action. No need to readjust the tool after each spring

PART NO. 16750

**OVERHEAD VALVE SPRING COMPRESSOR****Compresses valve springs for keeper removal without removing cylinder heads**

Offset jaws grip springs securely and compress the springs evenly.

PART NO. 16550

**UNIVERSAL FAN CLUTCH WRENCH SET****Removes Fan Clutch on Most Models**

This 2-piece set removes and installs fan clutches.

The set includes a universal holding wrench and a universal turning wrench. The holding wrench is adjustable to fit the bolts that attach the pulley to the water pump. The turning wrench has the 5 common fan clutch nut sizes built into one tool: 7/8" (22mm), 1 7/16" (36mm), 1 9/16" (39mm), 1 7/8" (47mm) and 2" (50mm). Both wrenches are long to provide extra leverage for stubborn fan clutch nuts. Made of heat treated alloy steel to provide strength.

PART NO. 42920

**BROKEN PLUG REMOVER KIT FORD 3V****A Three Step Kit for Removing Spark Plugs that have Seized in the Engine Head and Broken**

Includes a unique Porcelain Puller Tool that snaps onto the terminal of a broken spark plug to pull the porcelain out. Also includes a Porcelain Pusher for when the porcelain breaks off in the spark plug tip and a Self-Tapping Puller to remove the seized metal tip. Comes in a blow moulded plastic case for storage. Order Lisle 65710 for the Porcelain Puller individually or 65730 for the Porcelain Puller, Right Handed Nut and Housing.

PART NO. 65700

**VALVE SPRING COMPRESSOR****High Leverage Allows One-Hand Operation**

Exceptionally strong, rigid frame, weighs only 6 lbs. Works with nearly all valve-in head and L-head engines as well as truck and tractor engines.

PART NO. 44300

**DEEP HOLE ALUMINIUM HEAD M14 X1.25 SPARK PLUG HOLE REPAIR KIT****Replaces Stripped Spark Plug Threads in Aluminium Heads with 14mm Spark Plugs**

Installs a new solid steel spark plug thread insert in original thread location. Set includes one-piece drill tap, long tap holder, short tap holder, insert installer, swedger and handle. Includes three insert sizes: 5/16", 7/16" and 11/16"

PART NO. 65000

**BROKEN SPARK PLUG REMOVER FOR FORD V8 3 VALVE ENGINES****Set Includes a Unique Porcelain Pusher Tool**

This tool set removes broken spark plugs from 2004 to 2008 V8 3 valve per cylinder engines, (a common problem).

The set includes a unique porcelain pusher tool and a tapered, left-hand thread remover for removing the broken spark plug without leaving the porcelain in the engine cylinder. Porcelain pusher is used to press the porcelain piece, without breaking the porcelain, farther into the plug tip. This provides space for the left hand thread remover to bite into the stainless steel plug tip so it can then be pulled. **Spare Parts Available**

PART NO. 65600



## ENGINE



### VALVE LAPPER - LARGE

#### For Hand Lapping Valves

Thick handles for easy lapping.

1-1/8" and 1-3/8" (28.6mm - 24.9mm) diameter cups for larger valves

Replacement available

1 3/8" Replacement Cup - Part No. 21120

1 1/8" Replacement Cup - Part No. 21130

### SMALL VALVE LAPPER

#### For Hand Lapping Valves.

Thick handles for easy lapping.

Has 5/8" and 13/16" diameter cups for smaller valves.

Replacement available

13/16" Replacement Cup - Part No. 21220

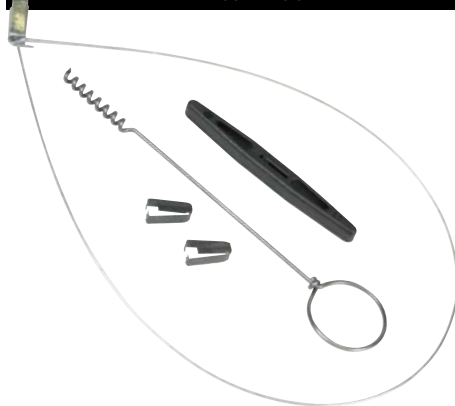
5/8" Replacement Cup - Part No. 21230

### WATER PUMP SPROCKET HOLDER ECOTEC

#### Holder for GM Ecotec Holds the Timing Chain and Gear in Place While Removing or Installing Water Pump on Ecotec Engines

Securely holds water pump sprocket preventing loss of timing or damage to the engine. Special half-moon design allows easier access to water pump gear bolts. Uses access cover bolts to hold the tool in place.

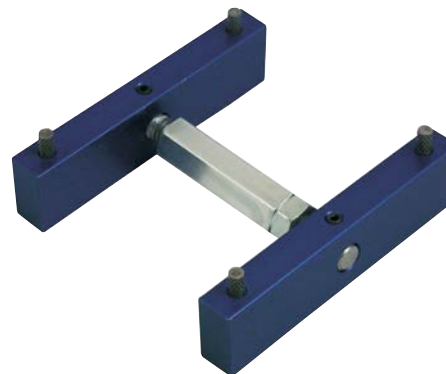
PART NO. 21100



PART NO. 21200



PART NO. 13800



### SNEAKY PETE

#### Removes and Installs upper rear main seals without dropping crankshaft

The Lisle 27000 includes everything needed to speed up a long, slow job. Cork screw puller makes it easy to remove old seal. To install new seal, 27000 includes a pulling wire with a removable T-handle and spring steel clip that grips the seal firmly as it is pulled into position. Two extra clips are furnished. Saves many times its cost every time it is used.

PART NO. 27000

### VALVE HOLDER

#### For Both 14mm & 18mm Spark Plug Threads

Commonly used when valve springs or valve stem seals are replaced. Air pressure helps prevent the valve from falling into the combustion chamber. Comes with two-step fitting for both 14mm & 18mm threads. Heavy duty 12" flexible hose allows easy access to spark plug hole and air supply. Thread fitting to spark plug hole and other end to air supply

PART NO. 19700

### DUAL OVERHEAD CAM (DOHC) LOCK TOOL

#### Locks Camshaft Sprockets in Place During Belt / Chain Replacement

This versatile tool easily locks and holds both camshaft sprockets firmly in place. Unique design uses knurled pins to hold against the inside of the cam sprockets. The two parallel bars "float" which allows the knurled pins to align with the sprockets. Preserves the engine timing during belt or chain replacement.

PART NO. 36880



### SHAFT IN SEAL PULLER

#### Removes cam shaft and crank shaft seals without damage to the shaft

Engage the adjustable hook behind the seal. Brace the push rod against the engine head and push the handle to remove the seal. Removes the seal without damage to the shaft.

PART NO. 58430

### UNIVERSAL CAM ADJUSTER

#### Adjusts to fit different sized cam sprockets

This adjustable tool is designed to both hold and turn cam sprockets. The tool is needed to turn the cam sprockets to adjust the cam position. It can also be used to hold the cam sprocket in place when removing the cam bolt. It will work on all single and dual overhead cam sprockets with holes.

PART NO. 38220

## ENGINE



## OIL PRESSURE SWITCH SOCKET

Fits 1" and 1-1/16" Switches Up To 1-5/8" Long  
One socket with the correct length to fit 1" and 1-1/16" oil pressure switches (for vehicles equipped with warning lights). 1-7/8" overall height for clearance. Use with 3/8" drive or 1-1/8" hex.

PART NO. 13200



## OIL PRESSURE SWITCH SOCKET

Fits 1 1/16" Switches Up To 2 5/8" Long, Found on Newer GM and Chrysler Vehicles

Fits 1 1/16" oil pressure sending unit (gauge type), found on most all '91 and newer GM vehicles. Also fits '87 and newer Chrysler vehicles with combination light and gauge oil pressure switches. Use with 3/8" drive or 1 1/8" hex

PART NO. 13250



## OXYGEN SENSOR SOCKET

Removes and Installs Oxygen Sensors on Most Domestic and Some Imports

Special 7/8" socket with cutaway slot to provide clearance for wire harness. Provides adequate depth to fit over sensor. Heat treated alloy steel. Use with 3/8" square drive or 1" wrench.

PART NO. 12100



## OXYGEN SENSOR THREAD CHASER

Cleans Threads in Oxygen Sensor Holes

Use with 3/4" hex socket or 3/8" square drive. Size: M18x1.5  
Also works on M18x1.5 spark plug threads.

IMPORTANT: Use anti-seize.

PART NO. 12230



## SPARK PLUG HOLE &amp; OXYGEN SENSOR THREAD CHASER

Double-Ended for Both 14mm & 18mm Threads

Cleans threads in spark plug holes, also oxygen sensor holes. Use with 3/4" spark plug socket

PART NO. 20200



## COMPRESSION TESTER

Quickly and Accurately Check Compression on Gasoline Engines

Gauge registers 0 - 300 P.S.I. and 0 - 2100 kpa. Fits 14mm and 18mm thread sizes

PART NO. 20250

Individual Part No.	Description
20530	Spark plug adapter 10mm
20540	Spark plug adapter 12mm



## VACUUM GAUGE AND FUEL PUMP TESTER

Easy reading gauge assures accurate vacuum and pressure check

PART NO. 20300



## STRAP WRENCH

Loosen or Tighten Cylindrical or Rectangular Objects

Handy, self-tightening strap wrench won't slip. Works great for installing or removing timing belt sprockets or belt pulleys.

Range from 1" to 6-5/8" (25.4mm - 263.5mm) round.

Tensile strength of strap is 1350 P.S.I. Handle is made of glass-filled polypropylene which provides superior strength

PART NO. 28500



## STETHOSCOPE SET

Dual purpose set detects both Mechanical & Air induced sounds

Use the black diaphragm chamber & screw-in metal probe to detect mechanical sounds from bearings, engines, transmissions, etc. For air induced sounds, attach the vinyl hose to hollow tube and funnel assembly. The funnel amplifier will detect noises from vacuum leaks, exhaust leaks, air leaks and wind noise. For hard to reach locations, remove the funnel and use the hollow tube.

PART NO. 52750



## MECHANIC'S STETHOSCOPE

Unique sound Chamber & Super thin diaphragm greatly amplifies sounds

Quickly pinpoints the source of mechanical noises in engines, transmissions, differentials and bearings.

PART NO. 52500

## ADJUSTABLE SPARK PLUG WIRE PULLER

Jaws Adjust to Five Positions

Plier jaws adjust to five different positions allowing easier access to spark plug boots. Specially shaped, cushioned jaws grip the boot straight on or from the side. Plastic handle grips help prevent shock.

PART NO. 51750



## RADIATOR

### SPILL-FREE FUNNEL

The Spill Free Funnel has been improved by adding an extra 45 degree elbow, a 5" extension, and a new E adapter. The E adapter is used on the surge tanks on many Ford applications. 45 degree elbow allows use on radiator caps that are placed at an angle. Extension allows access to caps located under shrouds or in fender wells.

The Spill-Free Funnel eliminates trapped air pockets which usually cause erratic cooling system and heater performance. It controls the proper amount of coolant entering system and enables unattended filling of the cooling system. The funnel eliminates squeaky belts caused by coolant overflow and protect the environment. Five adapters fit most domestic and import cars, light trucks and Ford vehicles.

PART NO. 24680



### NEW CLEAR FUNNEL

#### Replacement Bits:

21920	Lid for Funnel (will fit all older Funnels)
22210	Funnel
22280	45 Degree Elbow
22300	Fluid Stopper
22330	Large Cap A
22340	Medium Cap B
22370	Large Adapter A with Gasket
22390	Medium Adapter B with Gasket
22410	Small Cap C
22450	Small Adapter C with Gasket
24640	Threaded Cap D
24650	Threaded Adapter D with Gasket for GM
24670	5" Straight Extension
25390	Threaded Adapter E with Gasket for Ford

## PULLERS

### HARMONIC BALANCER INSTALLER

Installs Harmonic Balancers or Drive Pulleys that are Pressed on the Crankshaft

Set includes a driving screw, thrust bearing and threaded adapters necessary to work on a wide range of domestic and some import harmonic balancers. Two long adapters for use on Dodge Hemi and Generation III GM motors.

The 1.75" spacer allows the tool to work more effectively on deep harmonic balancers.

PART NO. 53460



### HARMONIC BALANCER PULLER SET

Updated Jaw Design on Damper Puller Provides Even Greater Strength. Clevis Pins Allow Jaws to be Quickly Removed and Replaced

This kit features the puller hardware and special pulling screws to remove most automotive harmonic balancers. The kit includes a standard harmonic balancer puller, pulling screws and adapters for 3300 and 3800 GM V6 engines, and our updated harmonic damper pulley puller for Chrysler, GM, Mitsubishi and Dodge.

PART NO. 51700



### HARMONIC BALANCER PULLER FOR GM

For GM 3300 And 3800 V6 Cylinder Engines

The 45300 is equipped with the special bolts and adapters to pull the harmonic balancer cleanly without damage to the crank sensor. Order the 45350 Retrofit Kit to use with your Lisle 45500 Harmonic Balancer Puller.

PART NO. 45300



### HARMONIC BALANCER PULLER

Helps stop damage to pulley and shaft

Designed to ease the operation of pulling the balancer pulley. It reduces damage to both the pulley and the shaft.

PART NO. 45500



45350 Retro-Fit Kit to suit GM 3300 & 3800 V6



## PULLERS

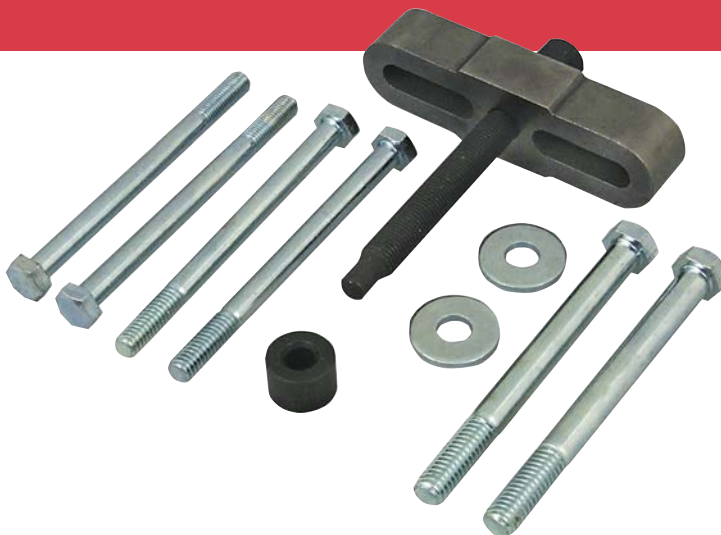
### STEERING WHEEL PULLER

Universal Puller for Most Makes & Models

Screw pad protects end of steering shaft. Heavy duty for long wear.

PART NO. 45000

45050 - Screw Pad



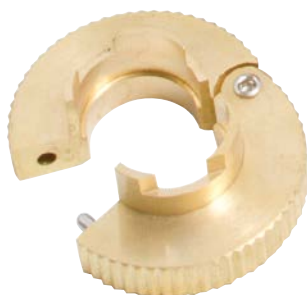
## FUEL MANAGEMENT

### 4 PC. LOW PROFILE JIFFY-TITE® DISCONNECT SET

Low profile design quickly and easily disengages the line from jiffy-tite quick-connect fittings without removal of the clip.

The teeth of the tool fit perfectly into tight tolerance of Jiffy-tite® connectors and when rotated allow the line to be pulled without damage to the connector or retaining clip so they can be reused. Includes four sizes: 3/8", 1/2", 5/8"-30% and 5/8"-39%. All sizes are available individually. Also available is the 3/4" Low Profile 3/4" Jiffy-tite Disconnect not included in the set.

PART NO. 22990



Individual Part No.	Description
22920	8mm jiffy Tite Disconnect
22930	3/8" Low Profile Jiffy-Tite Disconnect
22940	1/2" Low Profile Jiffy-Tite Disconnect
22950L	5/8" - 30% Low Profile Jiffy-Tite Disconnect
22960	5/8" - 39% Low Profile Jiffy-Tite Disconnect
22970	3/4" Low Profile Jiffy-Tite Disconnect



### DISCONNECT SET FOR JIFFY-TITE CONNECTIONS

Disengages the Line from Jiffy-tite Quick-Connect Fittings without removal of the Clip.

Handy spring-action of the stainless steel tool keeps the tool on the line and makes the tool easier to use. Teeth of the tool fit perfectly into tight tolerance of Jiffy-tite connectors and when rotated allow the line to be pulled without damage to the connector or retaining clip so they can be reused. Tools fit the most popular Jiffy-tite fittings found on oil cooler lines used on transmissions and radiators and on other applications. Applications: 1996 and newer GM vehicles; Many 2004 and newer Daimler Chrysler vehicles; Some 2005 and newer Mercedes vehicles; Harley-Davidson V-Rod; Freightliner; Peterbilt; Volvo; White. Patent 5,909,901

PART NO. 22710



### MASTER PLUS DISCONNECT SET

Contains popular disconnect tools for A/C, fuel, transmission, oil cooler and air lines

A complete set of disconnect tools that can be stored in a handy blow-moulded case.

PART NO. 39800

## FUEL MANAGEMENT



### BASIC FUEL INJECTION TEST SET

This set checks fuel pressure on most domestic (except GM TBI) and Japanese Fuel Injection and Throttle Body Injection Systems. Tests the following: Bosch AFC, MPC, Digijet/Digifant - except C.I.S.; Chrysler; Ford; GM - except T.B.I.; Japanese Fuel Injection Systems; others using Bendix-type fuel injection or Schrader-type valve including the small Schrader valve found on Ford.

PART NO. 58600



### MASTER FUEL INJECTION TEST SET

#### Test All Types of Fuel Injection Systems

Set checks fuel pressure on most Port Fuel Injection (PFI) and Throttle Body Injection (TBI) systems. Comes with a variety of adapters and gauges for checking many types of systems. Adapts to work with test port connections, end of hose connections and in-line connections. Tests GM, Ford, Chrysler, Honda/Acura, Toyota, Bosch CIS and L-Jetronic. List of component parts included with instructions.

PART NO. 55700



### MASTER PLUS DISCONNECT SET

A set of the most popular Disconnect Tools in one handy molded case

Includes fuel line quick connect and spring lock couplings, air conditioning line couplings, and transmission oil cooler connectors.

PART NO. 39850



### MASTER DISCONNECT SET

Contains Popular Disconnect Tools for A/C & Fuel Lines

A complete set of disconnect tools that can be stored in a handy blow-moulded case.

PART NO. 39900



### ANGLED DISCONNECT TOOL SET

Disconnects Air Conditioning and Quick Connect Fuel Lines

Disconnects spring lock couplings on Ford and Chrysler AC lines. Works on fuel lines and other quick disconnect couplings on domestic and import vehicles. The handles are angled to access tight spots. Made of durable plastic that resists fuels and solvents. Six sizes: 5/16", 3/8", 1/2", 5/8", 3/4" and 7/8".

PART NO. 39400



### FUEL & AC DISCONNECT PLIERS

Unique Design Provides Extra Leverage when Disconnecting Quick Connect Coupling Air Conditioning and Fuel Lines

Use with 5/16", 3/8" or 1/2" adapters from the Lisle 37000 or 39400 Disconnect Tool Sets. The pliers' forks have different sized openings so the tool can be turned around to fit single or two step collar designed connector lines. The pliers can also be used to reconnect stubborn lines or connections that are in hard-to-reach areas.

PART NO. 37300



### FUEL TANK LOCK RING TOOL

A Stout Tool to remove and Install Plastic Fuel Tank Lock Rings from 4" to 7-1/4" (101.6-184.2mm) without damage

Channel design on body allows the legs to adjust to fit a wide range of applications and keeps the drive centered. Works on the new smaller GM serrated rings and traditional rings. The design is compact so the tool is not left hanging over the work area with the potential for hitting other components.

PART NO. 63000



### AIR CONDITIONING / FUEL LINE DISCONNECT TOOL SET

Disconnects Air Conditioning and Quick Connect Fuel Lines

Set disconnects the spring lock couplings on Ford & Chrysler air conditioning lines. Works on fuel line quick connect couplings found on GM, Ford, & Chrysler. The 5/16" size fits on push lock connectors on Ford radiators and transmission lines. Set includes six sizes: 5/16", 3/8", 1/2", 5/8", 3/4" and 7/8".

PART NO. 37000

## TUNE UP



## INLINE SPARK TESTER

**Gives a Visual Check of the Ignition System**

Quickly diagnose problems with all ignition systems. Connect the tool between the spark plug and the plug wire. The tool is double-ended to offer a straight boot and a 90° boot on one tool. With the engine running, the tool flashes a mirror image of ignition spark

PART NO. 20610



## SPARK PLUG WIRE PULLER

**Nylon Stops the Shocks and Beats the Heat and Burns**

Helps you pull spark plug wires quickly, easily and without damage to the wire or rubber boots.

PART NO. 51500



## IGNITION SPARK TESTER

**Quickly Checks Spark at Plug Wire**

A handy tool to check ignition spark without removing the spark plug. The tool is specially calibrated to measure ignition voltage. Works on both standard and electronic ignition systems. Easy to use. Simply adjust calibration screw to proper gap size. Attach spark plug wire to end of tester. Clamp tester on engine to ground. Crank engine and check for spark.

PART NO. 50850



## SPARK TESTER

**Tests spark plugs, spark plug wires and coils without puncturing the wire**

With the engine running, place the grooved end of the tool over the plug wire. The bulb will flash to indicate spark.

PART NO. 19380

## TRANSMISSION



Part No. 23400



Part No. 55500

Part No. 61750

## TRANSMISSION / TRANSAXLE PLUGS

**Stops Loss of Transmission Fluid**

Stepped plugs fit transmissions and transaxles on most cars and pickups. Stepped design prevents slipping. Plugs cover a range of 1" - 2.180" (25.4mm - 55.37mm).

PART NO. 23400

## CLUTCH ALIGNMENT TOOLS

**Faster, Easier Replacement of Clutches**

55500 shaft and bushings provide an accurate fit for eight pilot bearing sizes. Tapered cone handles the rest. 61750 has a shaft, ten pilot bushings and two plate alignment cones with graduated turned diameters for "automatic" fit of most metric clutch plates. A tapered cone to fit all others is provided.

## CLUTCH ALIGNMENT TOOL

PART NO. 55500

## METRIC CLUTCH ALIGNMENT TOOL

PART NO. 61750



## FILTER

## SWIVEL-GRIPPER™

Tough, Stainless Steel Band with Permanently Bonded Textured Coating for Superior Gripping Power...won't Slip

Swivel handle makes it easy to turn in tight spots. Handle swivels more than 180° with adjustable tension. Tension adjusting nut allows swivel pressure to be regulated — no more floppy filter wrenches. Patent pending coating process adds many additional gripping points to securely grab the filter. Extra Small Swivel-Gripper has a special narrow 1/2" band to fit into tight places. Can also be used on some fuel filters. Large Swivel-Gripper fits many tractors and other farm implement products.

# SWIVEL-GRIPPER™

## "NO-SLIP" FILTER WRENCH



## "NO-SLIP" FILTER WRENCH

Extra Small	Range 2.375" - 2.625" (60.3 - 66.7mm)
-------------	---------------------------------------

PART NO. 57010
----------------

## "NO-SLIP" FILTER WRENCH

Small	Range 2.875- 3.25(73 - 82.5mm)
-------	--------------------------------

PART NO. 57020
----------------

## "NO-SLIP" FILTER WRENCH

Standard	Range 3.5- 3.875(88.9 - 98.4mm)
----------	---------------------------------

PART NO. 57030
----------------

## "NO-SLIP" FILTER WRENCH

Large	Range 4.125" - 4.5" (104.7 - 114.3mm)
-------	---------------------------------------

PART NO. 57040
----------------

OIL FILLER CAP WRENCH  
FOR DODGE/JEEP

Fits threaded plastic Oil Filler Caps on Newer Dodge/Jeep V8 Engines

Helps loosen stubborn oil filler caps by providing leverage. Can be used with 3/8 square drive. Works great in hard-to-reach areas. For use on many Dodge Ram, Dakota and Durango as well as some Jeep Liberty, Grand Cherokee and Commander with threaded plastic oil filler caps.

PART NO. 34000
----------------

## "SWIVEL GRIP" OIL FILTER WRENCHES

## JOHN DEERE OIL FILTER WRENCH

Range 4.75" - 5.1875" (120.7 - 131.8mm)
---

PART NO. 53200
----------------

LARGE SWIVEL GRIP  
OIL FILTER WRENCH

Range 4.125" - 4.5" (104.7 - 114.3mm)
---------------------------------------

PART NO. 53250
----------------

STANDARD SWIVEL GRIP  
OIL FILTER WRENCH

Range 3.5" - 3.875" (88.9 - 98.4mm)
-------------------------------------

PART NO. 53500
----------------

## Handle Swivels to Clear Obstructions

All models feature the swivel handle, gripper "teeth" and 1" wide stainless steel band. The swivel handle makes it easy to turn filters in hard to reach locations. Vinyl covered handle.

OIL FILTER WRENCH FOR CUMMINS  
& DETROIT DIESEL ENGINES

Range 4.3125" - 4.75" (109.5 - 120.7mm)
---

PART NO. 54200
----------------

OIL FILTER WRENCH FOR  
CATERPILLAR ENGINES

Range 5.25" - 5.75" (133.5 - 146mm)
-------------------------------------

PART NO. 54300
----------------

SMALL SWIVEL GRIP  
OIL FILTER WRENCH

Range 2.875" - 3.25" (73 - 82.5mm)
------------------------------------

PART NO. 53700
----------------

SWIVEL GRIP  
OIL/FUEL FILTER WRENCH

Range 2.375" - 2.625" (60.3 - 66.7mm)
---------------------------------------

PART NO. 54400
----------------

## FILTER



## FILTER WRENCH

## Straight Handle Filter Wrench

1" stainless steel band with special "teeth" grips tightly. Vinyl covered handle provides firm, comfortable grip. 3 1/2" - 3 7/8" Range (86.9mm - 98.42mm)

PART NO. 53900

## OIL FILTER PLIERS

## Two Position, Slip Joint Handle for Greater Range

Range from 2-1/4" to 4" (57.15 - 101.6mm) Sure grip teeth prevent slipping. Cushioned handles provide comfort.

PART NO. 50750

## OIL FILTER PLIERS

## Two Position, Slip Joint Handle for Greater Range

Range from 3-5/8" to 6" (92.1 - 152.4mm) Sure grip teeth prevent slipping. Cushioned handles provide comfort.

PART NO. 50950

## CAP STYLE FILTER WRENCH SET

## Set Includes Ten 3/8" Drive Cap Wrenches

Fits many domestic and import automotive applications.

Complete set comes in a handy plastic case.

PART NO. 54920

Part No. 54920



## FILTER SOCKET SET

## 5 PIECE

## Set of 5 Low Profile Oil and Fuel Filter Canister Sockets in One Handy Case

Contains very low profile, 6 point 24mm, 27mm, 29mm, 32mm and 35/36mm sockets for use on oil and fuel filter canisters when replacing the element. Use with 3/8" drive. 2009 and up Chevy Aveo, Pontiac G3 and 2011 and up Chevy Cruze with 1.4L, 1.6L, 1.8L motor use the 24mm socket.

PART NO. 13300

## H.D. END CAP WRENCH

## Size: 76mm - 14 flutes

End Cap Filter Wrenches has been improved by adding welds to hold a steel disc to the top of the wrench. This is in addition to the spots welds which will greatly increase its strength. Use with 3/8" Square Drive

PART NO. 61570

Part No. 61570  
was 54760

## FILTER WRENCHES

Steel jaws grip filter without slipping. Works in tight spots from the front of the filter using 3/8" drive.

## WIDE RANGE FILTER WRENCH

63250 Range from 3-1/8" to 3-7/8" (79.4 - 98.4mm)

PART NO. 63250

## IMPORT CAR FILTER WRENCH

63600 Range from 2-1/2" to 3-1/8" (63.1 - 79.4mm)

PART NO. 63600



## FILTER



### ADJUSTABLE OIL FILTER WRENCH

For Trucks and Tractors. Fits John Deere, Case, Caterpillar, Mack, Detroit Diesel & Others Tough, stainless steel band adjusts for extra range...won't slip. Professional quality. 1/2" square drive. Range 4-3/8" - 5-5/8" (111.1 - 142.8mm).

PART NO. 53100



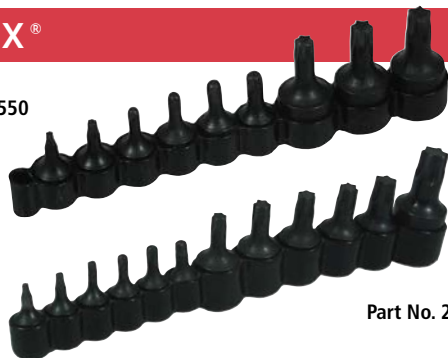
### "BIG RANGE" FILTER WRENCH

For Filters Up to 6" (152.4mm)  
Adjusts quickly to fit any spin-on oil filter up to 6" diameter.  
Use with 1/2" drive or 3/4" wrench. Strong polypropylene belt.

PART NO. 63500

## TORX®

Part No. 26550



Part No. 27200

### TORX® BIT SETS

Sizes for Most Applications, T-10 through T-60

All Torx bits are made of heat-treated alloy steel.

26550 - 9 pc. set includes T-10 through T-50.

27200 - 12 pc. set includes the same bits as our 9 pc. set, plus the T-47, T-55 & T-60 bits. T-10 through T-30 are 1/4" drive. T-40 through T-55 are 3/8" drive. T-60 is 1/2" drive.

#### 9 PIECE

Sizes: T-10, T-15, T-20, T-25, T-27, T-30, T-40, T-45, T-50

PART NO. 26550

TORX® Replacements Bits:

26560	T-10	1/4" drive
26570	T-15	1/4" drive
26580	T-20	1/4" drive
26590	T-25	1/4" drive
26600	T-27	1/4" drive
26610L	T-30	1/4" drive
26620L	T-40	3/8" drive
26630L	T-45	3/8" drive
26640	T-50	3/8" drive

#### 12 PIECE

Sizes: T-10, T-15, T-20, T-25, T-27, T-30, T-40, T-45, T-47, T-50, T-55, T-60

PART NO. 27200

TORX® Replacements Bits:

26560	T-10	1/4" drive
26570	T-15	1/4" drive
26580	T-20	1/4" drive
26590	T-25	1/4" drive
26600	T-27	1/4" drive
26610L	T-30	1/4" drive
26620L	T-40	3/8" drive
26630L	T-45	3/8" drive
26500	T-47	3/8" drive
26640	T-50	3/8" drive
26650	T-55	3/8" drive
26520	T-60	1/2" drive

### SUPER TORX® BIT SET

20% Stronger than One-Piece Torx Bits

This set includes nine of the most popular TORX® sizes for automotive applications. The six smaller bits are 1/4" drive, and the three larger bits are 3/8" drive. The set includes T-10, T-15, T-20, T-25, T-27, T-30, T-40, T-45 & T-50 in a convenient holder.

PART NO. 37600

### TORX® SOCKET SET

#### 9 PIECE

For External Torx Bolts

Seven sizes E-6 thru E-16. The three smaller sizes are 1/4" drive; the four larger sizes are 3/8" drive. Made of heat-treated alloy steel. Sockets are kept in a convenient vinyl holder.

Sizes	E6	E7	E8	E10
Bolt Sizes	#8	#10	#12 & 1/4"	5/16"

Sizes	E12	E14	E16
Bolt Sizes	3/8"	7/16"	1/2"

PART NO. 26750

TORX® Socket Replacements:

\*Not in Set

26770	E5*	#6	1/4" drive
26780	E6	#8	1/4" drive
26790	E7	#10	1/4" drive
26800	E8	#12 & 1/4"	1/4" drive
26820	E10	5/16"	3/8" drive
26830	E12	3/8"	3/8" drive
26840	E14	7/16"	3/8" drive
26850	E16	1/2"	3/8" drive



Super TORX® Replacement Bits:

\*Not in Set

37610	T-10	1/4" drive
37620	T-15	1/4" drive
37630	T-20	1/4" drive
37640	T-25	1/4" drive
37650	T-27	1/4" drive
37660	T-30	1/4" drive
37670	T-40	3/8" drive
37680	T-45	3/8" drive
37690	T-47	3/8" drive
37700	T-50	3/8" drive
37710	T-55*	3/8" drive
37720	T-60*	1/2" drive



## FASTENER



### LONG ARM HEX KEY SET

#### In a Handy Storage Case

Allows for longer reach for deep socket Allen-type screws. Also increases torque. 42500 includes 12 fractional hex keys. Heat-treated alloy steel.

Sizes: .05", 1/16", 5/64", 3/32", 7/64", 1/8", 9/64", 5/32", 3/16", 7/32", 1/4", 5/16",

PART NO. 42500

### LONG ARM HEX KEY SET

#### In a Handy Storage Case

Allows for longer reach for deep socket Allen-type screws. Also increases torque. 42650 includes 9 metric hex keys. Heat-treated alloy steel.

Sizes: 1.5mm, 2mm, 2.5mm, 3mm, 4mm, 5mm, 6mm, 8mm, 10mm

PART NO. 42650



### HEX BIT SET

#### Seven Piece Set - Metric - 3/8" Square Drive

High strength, heat-treated alloy steel bits are securely broached into chrome plated sockets. No set screws to tighten! Bit sets store in a convenient vinyl storage holder. Drive Size: 3, 4, 5, 6, 7, 8, 10mm

PART NO. 33850

#### Replacement TORX® Bits:

33860	3mm
33870	4mm
33880	5mm
33890	6mm
33900	7mm
33910	8mm
33920	10mm



### 1/4" FLEX MAG DRIVER MAGNETIC

A 9" (228mm) flexible shaft with 1/4" square drive for starting and removing fasteners in hard-to-reach locations. Strong neodymium magnet in the square drive tip can also be used as a magnetic pickup tool with a 12 oz. (340grams) weight capacity.

PART NO. 63200

### LOCK RING PLIERS

For Removing and Installing All Types of Lock Rings. Spreads lock rings commonly found on transmissions, master cylinders, brakes and other applications. Specially designed flag tipped jaws are knurled on the end to prevent slipping.

PART NO. 44900



### HEAVY DUTY INTERNAL / EXTERNAL SNAP RING PLIERS

**Reversible Action for Internal and External Applications**  
The heavy duty plier construction and larger tips are designed for larger snap rings. The tool quickly converts from internal to external use by pivoting the handles. Tough tool easily compresses internal rings and expands external rings. Conical tip ends prevent the snap ring from slipping off the tips. Ten tip sets in a handy plastic pouch are included to fit a wide range of snap ring sizes. Tips are easily interchanged by turning a set screw, wrench included.

Replacement Tip: Set 49460

PART NO. 49200

### STUCK BOLT, NUT, AND STUD REMOVER SET

The 6 piece set removes standard and metric bolts, nuts and studs from 1/4" to 9/16" (6mm to 14mm). Drive the proper size remover over the bolt head, nut or stud. The remover spline cuts into the bolt head or threads for a sure grip

PART NO. 19250



Part No. 19250



### STUD REMOVER

Removes Studs from Engine Blocks, Exhaust Manifolds, Cylinder Heads and Other Applications

Allows for easy removal of studs. Tool has two holes, 1/2" (12.7mm) and 3/4" (19mm) for optimum fit, minimizing damage to threads. Range 3/8" (3.5mm) - 3/4" (19mm). Design allows tool to grip flush with mounting surface of the stud so it can grab studs that are broken off very close to the mounting surface. Use with 1/2" square drive.

PART NO. 71200



### SUPER OUT SET

A SUPER STRONG extractor set made of a special hardened, shock-resistant tool steel. Works on both left and right hand threads. Super Outs cut their way STRAIGHT into bolts, eliminating wedging or further tightening of frozen bolts and screws. Five extractor sizes extract 1/4" to 1/2" and larger bolts and screws.

PART NO. 62900

#### Replacement Super Outs:

Part No.	Bolt Size	Drill Size
62560	1/4"	1/8"
62570	5/16"	11/64"
62730	3/8"	15/64"
62580	7/16"	9/32"
62590	1/2"	3/8"



### SNAP RING PLIERS

#### SMALL

Reversible action for both Internal and External Snap Rings. Smaller Design to fit tight spaces

The tool quickly converts from internal to external use. Simply pivot each handle to the opposite side to reverse action. Includes four pairs of tips to fit a wide range of snap ring sizes. 45 and 90° tips for hard to reach areas. Conical tip ends prevent the snap ring from slipping off of the tips.

Replacement Tip Set: 46250

PART NO. 46200

## FASTENER



### HAND IMPACT TOOL SET 1/2"

**Loosens Rusted, Frozen Nuts, Bolts and Screws**  
Unique design delivers over 200 ft. lbs. of "Shock Torque."  
Can be reversed to tighten.  
Can also be used with impact sockets!

PART NO. 30200

#### Replacement Bits:

30000	1/2" Impact Tool	29550	#3 Phillips Bit
30150	1/2" Bit Holder	30190	#4 Phillips Bit
29630	#1 Phillips Bit	30170	3/8" Straight Slot Bit
30180	#2 Phillips Bit		



### HAND IMPACT TOOL SET 3/8"

**Loosens Rusted, Frozen Nuts, Bolts and Screws.**  
Unique design delivers over 200 ft. lbs. of "Shock Torque." Can be reversed to tighten. Can also be used with impact sockets! 3/8" sq. drive with 3/8" drive bit holder; #1, #2, #3, #4 Phillips, and 3/8" straight slot bits.

PART NO. 29200

#### Replacement Bits:

29000	1/2" Impact Tool	29550	#3 Phillips Bit
29630	#1 Phillips Bit	30190	#4 Phillips Bit
30180	#2 Phillips Bit	30170	3/8" Straight Slot Bit

### SMALL FASTENER REMOVER

**For Use with a Pneumatic Impact Tool to Loosen Rusted or Seized Fasteners.**

A 3/4" open end wrench can be used to turn the socket while impacting the fastener. A locking pin in the driver keeps the bit holder in place on the square drive for safe operation. The bit holder can be removed from the driver by depressing the pin. Works faster than hand impact tools. Especially useful for removing brake rotor screws. The tool works with 5/16" Hex impact bits. Kit includes Phillips #1, #2, #3, #4 and a straight slot bit.

PART NO. 60530



### MINI ZERO RATCHET COMBO KIT

**A Toothless, Infinite Ratchet Housed in a Reversible Anodized Aluminum Body**  
These tools work where a standard screwdriver or ratchet can't fit. The driver can be flipped to switch from clockwise to counter-clockwise drive. Set includes: 1/4" square drive, 3/8" square drive and a 1/4" hex magnetic bit driver for 1/4" bits. Also includes a set of six 1/4" drive bits.

PART NO. 61200

#### Replacement Bits:

61300	1/4" Square Drive Ratchet (Blue)	61320	1/4" Square Drive Ratchet (Green)
61310	3/8" Square Drive Ratchet (Red)	61350	6 Piece Bit Set



### RIGHT ANGLE RATCHETING SCREWDRIVER

Use where a screwdriver won't fit. Makes it easy to remove and install moulding around fender wells and other tight places. Place handle over the bit and turn. Reverse handle on bit to tighten. Can also be used with 1/4" round shaft screwdriver. Ratcheting action with infinite settings. Includes straight slot and #2 Phillips bit assemblies.

PART NO. 64250

#### Replacement Bits:

64300	Slot Bit Assembly
64330	Phillips Bit Assembly
64260	Ratchet Handle

## BODY



### WINDOW HOLDER

**Holds Door Glass While Working on Window Regulator**  
Works on all cars and trucks with a top door frame. Simply loop cable over door frame and attach suction cups to each side of glass. Window glass is then securely held above the door while work is performed.

PART NO. 63900



### WINDSHIELD LOCKING STRIP TOOL

**Two Double-Ended Tips to Fit Most All Applications**  
Unique design allows tip to swivel 90 degrees in either direction to work where others won't. Just select the tip with opening that most closely fits locking strip, and then feed locking strip into eyelet. Tip swivels in 90° in either direction.

PART NO. 47000



### WINDOW BELT MOULDING REMOVER

**Quickly Removes All Window Belt Moulding**  
Slide the powder-coated tool downward between the window exterior and the door. The channel side of the tool should face the door. When the tool channel is below the belt moulding, push or pull the tool upward. The tool quickly removes the belt moulding without damage to the window or the mouldings. Fits most domestic and import vehicles.

PART NO. 35150



### PLASTIC FASTENER REMOVER

**Removes Plastic Hold-Down Fasteners**  
This tool quickly removes various types of plastic fasteners that hold on weather stripping, radiator shrouds, fender linings, air dams and other plastic or rubber parts. The tool is equipped with a sliding urethane button for use when extra leverage is necessary.

PART NO. 35260



### PUSH PIN PLIERS

**For Easy Removal of Plastic Push Pin Type Panel Fasteners with Center Pins**  
Pointed pliers tips will not damage the pin or anchor. The tool is only 7-1/2" (190mm) long to fit in tight spaces.

PART NO. 41250

## BODY

**WINDSHIELD WIPER ARM REMOVER**

Makes Wiper Arm Removal and Replacement an Easy Job  
Easily removes wiper arms without damage to car finish.

PART NO. 65750

**DOOR UPHOLSTERY REMOVER**

**For Plastic Fasteners**  
Place the tool under the edge of the door panel and insert into fastener as far as possible... then simply pry up. Rugged tool with a large comfortable handle.

PART NO. 35400

**WINDOW AND DOOR CLIP REMOVER / INSTALLER**

**Removes and Installs Door Handle and Window Crank Clips**

Works on the common "C" type clip. Really fast and easy. Helps prevent damage to door panel upholstery. Opposite end firmly holds clip for easy installation for long use. Steps can be sharpened if needed

PART NO. 18600

## BATTERY

**BATTERY CARRIER**

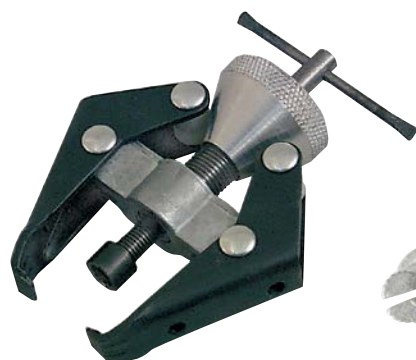
**Lift and Carry Batteries Safely**

Sturdy steel jaws securely hold batteries. Spring-action handle turns lifting power into battery gripping pressure. Form-fitting handle provides a solid gripping surface for your hand. Carrier works on nearly all batteries, from motorcycles to boats. Saw-tooth jaw tips provide no-slip battery gripping power. Carrier grips the battery just below the top lip for good balance. A heavy-duty tool that is built to last.

PART NO. 57850



Opens up to 254mm

**BATTERY TERMINAL & WIPER ARM PULLER**

**Removes Battery Terminals and Bolted on Wiper Arms**  
A dual-purpose puller. Easily removes stuck battery terminals. Tighten knurled cone to force jaws under the cable clamp. Turn centre screw to lift clamp off terminal. Also removes bolted on windshield wiper arms that fit over a tapered spline. The puller screw pad is designed to fit the top of the spline post for easy pulling.

PART NO. 54150

**BATTERY CLAMP SPREADER & CLEANER**

**One Tool for Two Jobs**  
Dual-use pliers spread battery post clamp and tapered, ribbed tips remove corrosion and build-up from inside the clamp.

PART NO. 55410

**BATTERY BRUSH**

Cleans dirt and corrosion from battery terminals and cable clamps. The external brush cleans cable clamps and internal brush cleans terminal posts. Case is made of high impact plastic that will not weaken in cleaning solutions

PART NO. 11120



## ELECTRICAL

### DELUXE RELAY TEST SET

**Includes 8 Jumpers to Fit Most Popular Relays. Also Includes Test Lead Kit and Relay Puller Pliers.**

Jumpers have tabs for clamping and flat pads to place test leads on. No need to pierce wires or connect multiple jumper wires.

Also Includes Test Lead Kit for easily and securely connecting Relay Test Jumpers to a multimeter. Jumper wire may be used between common and open to close the relay circuit for testing and has a test port to easily check voltage.

Also provides access for a clamp-on amp meter. Relay Puller Pliers easily remove electrical relays without damage to the relay or electrical box.

**PART NO. 60660**

Qty	Description
1	Green 4mm Banana to 1/4" Male Spade
1	Blue 4mm Banana to 7.75mm Male Spade
1	Relay Puller Pliers

Qty	Description	Part No.
1	Yellow Relay Test Jumper	56820
1	Red Relay Test Jumper	56830
1	Blue Relay Test Jumper	56840
1	Green Relay Test Jumper	56850
1	Orange Relay Test Jumper	60620
1	White Relay Test Jumper	60630
1	Purple Relay Test Jump	60640
1	Grey Relay Test Jumper	60650



### MASTER RELAY AND FUSED CIRCUIT TEST KIT

**Kit makes testing relays or live circuits quick and easy.**

\*Includes 8 Jumpers to fit most popular relays.

\*Includes Test Lead Kit for easily and securely connecting Relay Test Jumpers to a multimeter.

\*Terminal Leads with switch, fuse and power options provide easy access to check current or voltage on many fuses and relays used on vehicles today.

\*Also allows testing of relay configurations not covered by our eight Relay Test Jumpers, Like Volkswagen, BMW and other European vehicles.

\*Relay Puller Pliers easily remove electrical relays.

\*Works without piercing wires.

**PART NO. 69300**

Qty	Description	Part No
1	Switch with 4mm Stackable Banana	69260
1	4mm Female Banana to Alligator Clamp	69270
2	Red 4mm Banana to 1/4" Female Terminal	69280
2	Green 4mm Banana to 1/4" Male Spade	69290
2	Yellow 4mm Banana to 2.75mm Male Spade	69310
2	Blue 4mm Banana to 7.75mm Male Spade	69320
2	Black 4mm Banana to Stripped wire end	69330
1	4mm Banana males with inline ATO Fuse	69340
2	39 3/8" 4mm Female to 4mm Male Extension	69350
1	Relay Puller Pliers	

Qty	Description	Part No.
1	Relay Test Jumper Wire Set	
1	Yellow Relay Test Jumper	56820
1	Red Relay Test Jumper	56830
1	Blue Relay Test Jumper	56840
1	Green Relay Test Jumper	56850
1	Orange Relay Test Jumper	60620
1	White Relay Test Jumper	60630
1	Purple Relay Test Jump	60640
1	Grey Relay Test Jumper	60650



### BACK PROBE & ALLIGATOR CLIP SET

**17 PIECE**

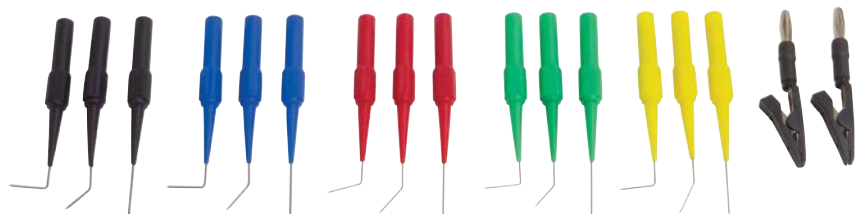
Provides the technician with an assortment of back probe pins with standard banana plug connections. Alligator clips allow many ways to connect to multimeter probes. The probes are fully insulated which provides added protection. The alligator clips provides a better way to connect, reducing the chance of a bad reading.

17 piece set will include probes that will work with .027 wire, (3)- red straight, 45°, and 90°, (3)- green straight, 45°, and 90°, (3)- yellow straight, 45° and (2)-black alligator clips. It will also include two set of probes that will work with .040 wire, (1)- blue straight, 45°, and 90° and , (1)- black straight, 45°, and 90°.

**PART NO. 64900**

Qty	Description
1	.027" Straight Back probe- Red
1	.027" Straight Back probe- Green
1	.027" Straight Back probe- Yellow
1	.027" 45 deg Back probe- Red
1	.027" 45 deg Back probe- Green
1	.027" 45 deg Back probe- Yellow
1	.027" 90 deg Brack probe- Red
1	.027" 90 deg Brack probe- Green

Qty	Description
1	.027" 90 deg Brack probe- Yellow
1	.040" Straight Backprobe- Blue
1	.040" Straight Backprobe- Black
1	.040" 45 deg Backprobe- Blue
1	.040" 45 deg Backprobe- Black
1	.040" 90 deg Brackprobe- Blue
1	.040" 90 deg Brackprobe- Black
1	Aligator Clip to Banana Plug



## ELECTRICAL



## RELAY TEST JUMPER KIT

Set of Four Relay Test Jumpers Make Testing Relays or Live Circuits Quick and Easy. Set includes four jumpers to fit the most popular size relays on domestic and import vehicles. Simply remove relay to be tested, insert correct jumper and insert relay into jumper. When using green four pin jumper be careful to align pins on jumper and relay correctly. No need to pierce wires or connect multiple jumper wires. Jumpers have tabs for clamping and flat pads to place test leads on.

PART NO. 56810

Available Individually:

## RELAY TEST JUMPER KIT II

Set Makes Testing Relays or Live Circuits Quick and Easy on Additional Applications. Set includes four jumpers to fit many popular relays on Honda, Hyundai, Mitsubishi, Nissan, Toyota, newer Ford and GM mini micro relays as well as International trucks. Simply remove relay to be tested, insert correct jumper and insert relay into jumper. When using grey four pin jumper be careful to align pins on jumper and relay correctly. No need to pierce wires or connect multiple jumper wires. Jumpers have tabs for clamping and flat pads to place test leads on.

PART NO. 60610

Available Individually:

60620	Orange Jumper	60640	Purple Jumper
60630	White Jumper	60650	Grey Jumper

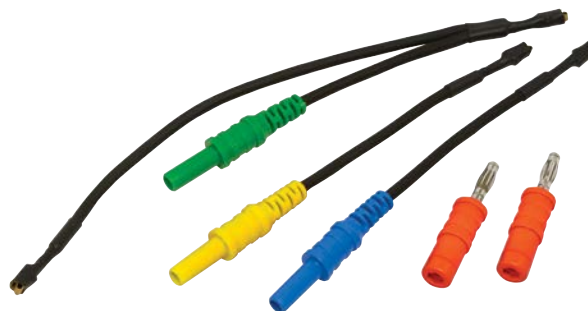
## TEST LEAD KIT FOR RELAY TEST JUMPERS

Use with 56810 or 60610 to Easily and Securely Connect Relay Test Jumper to a Multimeter. Can also use banana plug to pin probe adapter for use with pin probes. Kit contains two terminal to banana tip wires, two pin tip to banana plug adapters and one terminal to banana tip wire with jumper wire. Jumper wire may be used between common and open to close the relay circuit for testing and has a test port to easily check voltage. Also provides access for a clamp-on amp meter.

PART NO. 69200

Available Individually:

69210	Orange Banana Plug Adapter (2)
69220	Terminal to Blue Plug
69230	Terminal to Yellow Plug
69240	Terminal to Green Plug



## HEAT SHRINK TUBING ASSORTMENT

RoHS Compliant, Polyolefin heat shrink tubing for Insulating and Protecting Soldered Connections and Connectors

Includes 160 4" long tubes with six diameters in various colors. Also works for marking and bundling wires. Tubing is halogen free and UL & CSA certified at 600V@125°C. Shrinks at 194° - 248°F (90° - 125°C) with a radial shrink ratio of 2:1.

Part No	Description	Piece
27180	Heat Shrink Tube 1/16"	60 Piece
27190	Heat Shrink Tube 3/32"	35 Piece
27210	Heat Shrink Tube 1/8"	25 Piece
27220	Heat Shrink Tube 3/16"	20 Piece
27230	Heat Shrink Tube 1/4"	10 Piece
27240	Heat Shrink Tube 3/8"	10 Piece

PART NO. 27170



## MINI LIGHT WITH MAGNET

2 PIECE

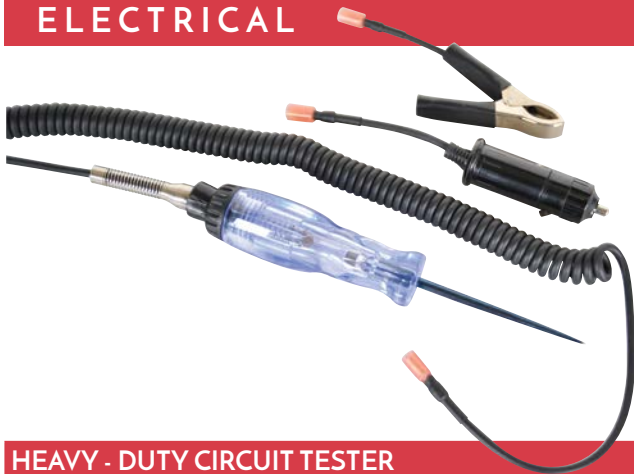
Mini Magnetic light is compact to fit into tight areas where standard flashlights will not

Extra bright 8 lumen double-chip LED for continuous use up to 8 hours. Strong magnets attach to ferrous metal objects for hands free use. Thumb switch for easy on and off. Includes 2 CR2032 batteries with quick change battery holder.

PART NO. 63350



## ELECTRICAL



### HEAVY - DUTY CIRCUIT TESTER WITH GROUNDING ADAPTERS

**Heavy-Duty Circuit Tester with Multiple Ground Source Connection Options**  
Heavy-duty circuit tester with multiple options for connecting to a ground source. Long, 12' cord has a quick coupler to securely connect clamp or power outlet plug. Large, strong clamp connects securely. Power outlet plug can always be used to provide ground in the cabin. For testing circuits up to 12 volts.

PART NO. 30610



### HEAVY DUTY CIRCUIT TESTER

**Quickly Tests Low Voltage up to 12 Volts**  
A heavy duty circuit tester for lifetime use. The probe, handle, cord and clamp are reinforced for extra durability. Comes with a strain relief spring on the cord

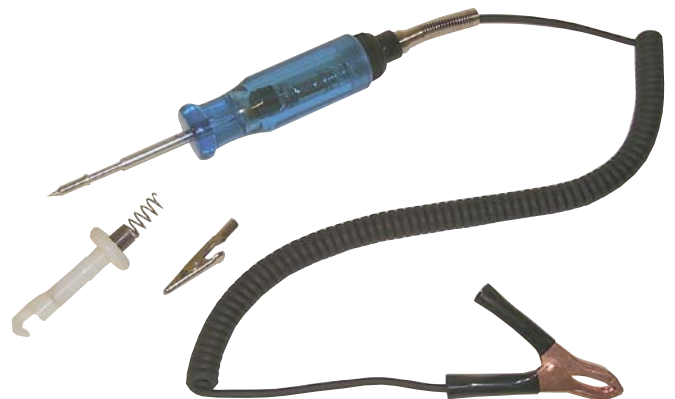
PART NO. 28400



### HEAVY DUTY CIRCUIT TESTER / JUMPER

**A 2-in-1 Tester that Tests Circuits up to 12 Volts and Works as a Jumper Wire for Power or Ground**  
Heavy-duty circuit tester for checking low voltage up to 12 volts. By depressing the red button the tester becomes a jumper for powering electrical components or a ground. The probe, handle, cord and clamp are reinforced for durability. Comes with a strain relief spring on the cord.

PART NO. 32900



### THE ULTIMATE CIRCUIT TESTER KIT

**Heavy Duty Tester Signals With a Light and Buzzer**  
The tester kit tests low voltage up to 28 volts. Also finds electrical shorts, checks polarity, detects battery drain, and checks circuits from a distance. Heavy-duty coil cord extends over 8 feet (2.4m). Detachable, spring-loaded hook pulls the center of the wire into the probe every time. Attach alligator clip to the probe when a clip-on connection is needed.

PART NO. 28640



### COMPUTER SAFE CIRCUIT TESTER

**Also Indicates Polarity**  
Safe for automotive computers. Won't damage sensitive electronic components. Draws less than 21 mA. at 12 volts DC. Operating range 3-28 volts. The red light indicates positive polarity, green indicates negative polarity.

PART NO. 24550



### LOW CIRCUIT TESTER

Quick check both AC and DC current up to 12 volts with power on. Helps locate shorts or breaks in wiring. Complete with insulated grounding clip.

PART NO. 26250





### PARASITIC DRAIN TESTER

**Provides an easy method to connect a Multimeter to the Vehicle Electrical System to Diagnose hidden Battery Drain**

Replaceable in-line fuses protect both the meter and tester in the event a high current source on the vehicle is left on. The multimeter is bypassed with the switch during connection in case of a power surge. The tester and meter can remain connected until other computer systems shut down, isolating the drain. As a convenience, stacking banana connectors are used on the tester. This allows voltage to be measured on various locations on the vehicle during the drain test, using standard test leads.

PART NO. 64970



### COIL-ON-PLUG SPARK TESTER

**Provides an easy way to check Ignition Systems with Coil-On Plugs.**

**Applications include Ford, Chrysler, Mitsubishi, Nissan and More**

It is the quickest way to test for no-start conditions. An inductive test cannot be performed, because there are no plug wires. High visibility white lettering makes it easy to read the gap measurement from 0 to 40k. The round knob provides easy gap adjustment and the 12" (300mm) ground wire comes with a shielded clip. The standard plug wire tip can be unscrewed so the tester can be used on small engines and some motorcycles.

PART NO. 20700

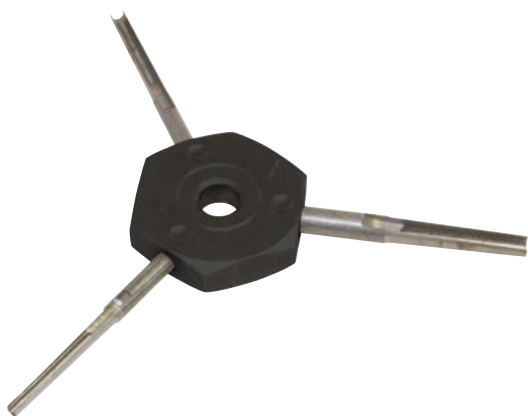


### OBD II SPLITTER WITH POWER & GROUND

**With more plastic found Inside Vehicles, the OBD II Splitter with Power & Ground Provides an easy way to find a ground for testing**

Plug a scanner into the Splitter to activate certain circuits while having access to power and ground for use with a multimeter, scope or test light. Standard 4mm banana plugs for connecting power and ground. Also useful for providing power and ground when installing aftermarket accessories such as cruise control, alarms, remote starters and stereo equipment.

PART NO. 64990



### DEUTSCH TERMINAL TOOL

**Works on OEM Electrical Connectors used on Trucks and Equipment such as Caterpillar, Kenworth, Peterbilt, Freightliner, Mack and More**

Also used on some Harley Davidson and industrial equipment connectors. Slotted tubes are made from stainless steel which is more durable than plastic. Built in a convenient "spider" design so the most popular sizes are always available.

PART NO. 59600



### WIRE TERMINAL TOOL KIT

**Set of Three Terminal Tools and Handle for removing wires from Terminals without damage**

Terminal tools work on conventional terminals as well as Pack-Con and Weather-Pack terminals found on many GM vehicles. New blue terminal tool fits many Ford applications. The handle slips over the probes to protect the technician's hand as well as to provide extra leverage.

PART NO. 57750

**Available Individually:**

14900	GM Terminal Tool
56500	Wire Terminal Tool
57780	Ford Terminal Tool
57790	Handle

## FEELER GAUGES



### MINI FEELER GAUGE

#### 16 Steel Blades

Precision blades ensure accurate measurements.

Blades from .010" to .035" (.254 - .889mm) are approximately 1/4" (6.35mm) wide by 1-3/4" (44.5mm) long.

PART NO. 68000

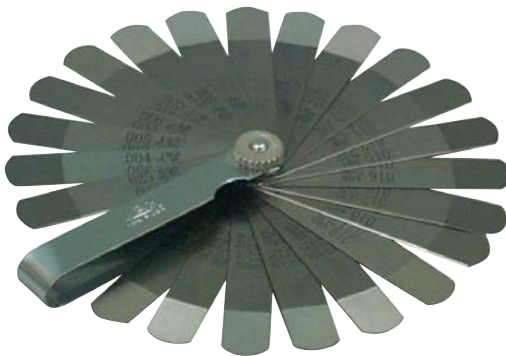


### VALVE TAPPET FEELER GAUGE

#### 11 Offset Steel Blades

Precision blades are offset at the proper angle for adjustment of valve tappets. Blades are approximately 1/2" (12.7mm) wide by 4" (101mm) long.

PART NO. 68050



### GO-NO-GO FEELER GAUGE

#### 22 Steel Blades

Precision stepped blades have a .002" step for accurate settings. Blades from .004" to .027" (.102 - .686mm) are approximately 1/2" (12.7mm) wide by 3-1/4" (82.6mm) long.

PART NO. 68150

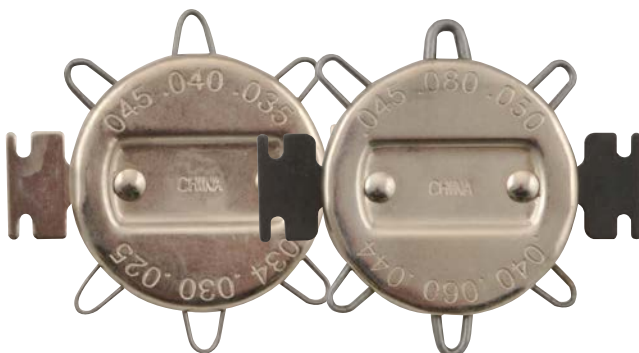


### STANDARD / HIGH ENERGY SPARK PLUG GAUGE & GAPPER

Gauges and Gaps all Types of Spark Plugs from .020" to .100" (.50mm to 2.53mm)

Tapered edge for gauging spark plugs. Specially designed hole with flange adjusts side wire of plug without pressuring center electrode.

PART NO. 67870



Part No. 67800

Part No. 67900

### SPARK PLUG GAPPERS

For Standard and Electronic Ignitions

67800 for standard ignition. 67900 for electronic ignition.

Standard Spark Plug Gapper

PART NO. 67800

Electronic Ignition Spark Plug Gapper

PART NO. 67900



### DELUXE FEELER GAUGE

#### 31 Blades. 1 Brass Blade .010"

Precision blades ensure accurate measurements. Blades from .0015" to .035" (.038 - .889mm) thickness are approximately 1/2" (12.7mm) wide by 3-1/2" (88.9mm) long.

PART NO. 68100

## FLARING / TUBING

### DOUBLE FLARING TOOL SET

#### Makes Both Single and Double SAE Flares

This tool set includes everything to flare thin wall steel, aluminum or .040 wall soft copper tubing. The set includes 5 thread dies and adapters for forming double flares on the following tubing sizes: 3/16", 1/4", 5/16", 3/8" and 1/2". However, this set is not for use on stainless steel tubing. Full instructions are included.

Long Bar	3/16" Adapter	5/16" Adapter
3/8" Adapter	1/4" Adapter	1/2" Adapter

PART NO. 31310



### 1/4" TUBING BENDER PLIERS

#### Bends 1/4" Brake Lines Without Kinking or Flattening, Especially in Tight Spots

Bends all types of 1/4" OD tubing. Unique head design bends tubing without collapsing the tube. Won't mark tube surface. Handles are more than 3-1/4" apart and unique head design keeps handles in line with the tubing for proper leverage even when bending steel tubing.

PART NO. 44070



### 3/16" TUBING BENDER PLIERS

#### Bends 3/16" Brake Lines Without Kinking or Flattening, Especially in Tight Spots.

Bend all types of 3/16" OD tubing. Unique head design bends tubing without collapsing the tube. Won't mark tube surface. The handles are more than 3-1/4" apart for proper leverage when handling even steel tubing.

PART NO. 44150

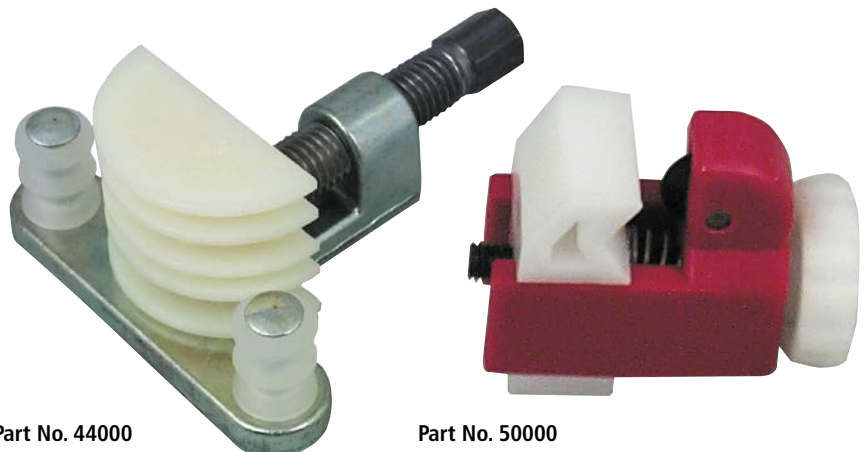


### TUBING BENDER

#### Bends 4 Sizes

Easy to use with one end connected - or can be mounted in a vice. Exclusive nylon form prevents kinking or flattening. For 3/16", 1/4", 5/16" and 3/8" O.D. tubing. Not recommended for 3/8" steel.

PART NO. 44000



Part No. 44000

Part No. 50000

### MINI-CUTTER

#### Smooth Nylon Action cuts Tubing Quickly

Easy-to-use Mini-Cutter features all nylon construction, giving you smoother, easier operation & longer tool life. Used in tight places right on the car. For all types of metal tubing. Handles smallest tubing to 5/8" O.D. Completely non-corrosive.

PART NO. 50000



## HOSE / GENERAL



### HOSE REMOVER PLIERS

**For Easy Removal of 5/32" to 1/2" Vacuum and Fuel Hoses**

Engage the tube (line) with the black jaw. This sharpened jaw actually "DIGS" into the tube to grip it! Squeeze and the hose is easily pushed off by the silver jaw.

PART NO. 47900

### FLAT BAND HOSE CLAMP PLIERS

**Adjustable Jaws fit all clamp sizes for easy removal and installation**

This tool removes and installs flat band hose clamps used on heater and radiator hoses. Tips screw in and out to fit all clamp sizes. Ratcheting lock mechanism holds the clamp in an open position for easy removal and installation. Tips can be switched to accommodate different applications. Offset jaws allow access in hard-to-reach areas

PART NO. 17100

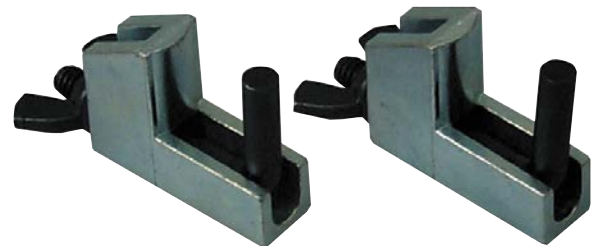


### HOSE CUTTER

**Cuts Flexible Hose up to 1-1/4"**

The Hose Cutter will cleanly cut heater hoses, fuel lines, and other types of flexible hose up to 1-1/4". The stainless steel blade is reversible for double the life. Plier is made of glass filled nylon for strength.

PART NO. 11420



### HOSE PINCHERS

A quick, easy way to pinch off vacuum lines, fuel lines, brake lines, etc. without damaging the line. Sold two per set

PART NO. 22850



### HOT SLEEVE

**Protects arms from burns while working around the Engine**

Made of durable, heat-resistant Kevlar®. Double wall construction for added heat protection. Will protect hand and forearm from hot objects. Will work on either right or left arm. Sleeve is washable.

PART NO. 18700



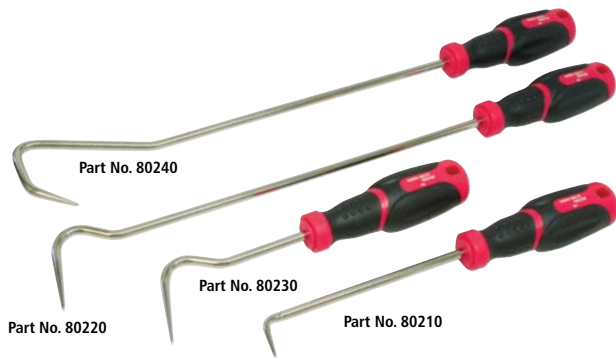
### ARM GLOVE

**Total hand and arm burn protection**

The heat resistant Kevlar® material protects hands and arms from hot surfaces. This enables work on hot engines and exhaust systems without waiting. Works on both right and left hands. The glove portion is coated with a vinyl tread for greater gripping power. Extends to 24". Washable.

PART NO. 21260

## GENERAL



## HOSE REMOVER SET

## 4 PIECE

## Set of Four Hose Removers with Many Uses

Contains long and short, standard and offset hooks. Can be used to remove hoses, mouldings, clips, clamps, seals, o-rings, cotter pins, gaskets, etc. Long pullers are 13" long. Handles are dual material for comfort and grip. Rods are heat-treated for strength and plated for durability. All hose removers are available individually skin-packed.

PART NO. 80200

## Available Individually:

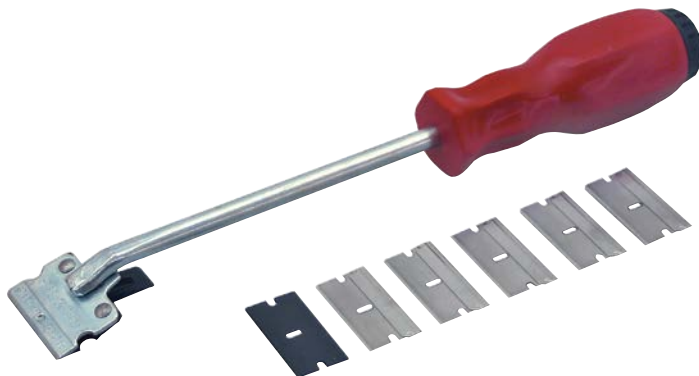
80210	Short Hose Pick	80230	Short Offset Pick
80220	Long Hose Pick	80240	Long Offset Pick

## GASKET REMOVER / PAN SEPARATOR

## For Use on any application with a Gasket Seal Such as Oil Pans, Transmission Pans and Differential Covers

For use on any application with a gasket seal such as oil pans, transmission pans and differential covers. Drive tool between gasket and pan with a hammer. Hardened carbon steel blade may be resharpener or replaced if damaged. Blade is not warranted other than when new.

PART NO. 50190



## RAZOR BLADE SCRAPER

## At last, a scraper that is designed to reach in tight places

Comes with five stainless steel blades for removing stickers from windshields, bumpers, etc. Also comes with a plastic blade for use on safety plastic laminated windshields to prevent scratching. Spring-release allows easy interchange of blades. Reverse blade in holder for storage. Hollow handle stores all blades when not in use.

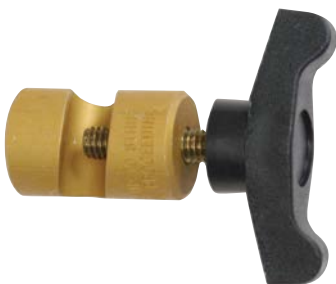
PART NO. 52000

## 100 PACK OF RAZOR BLADES

## Convenient Pack of Standard Razor Blades

Contains 100 stainless steel, single edged razor blades. Pack is resealable for organized storage. Fits all standard razor blade tools, including Lisle 52000 Razor Blade Scraper.

PART NO. 52150



## UNIVERSAL LIFT SUPPORT CLAMP

## Holds Weak Gas Charged Lift Supports Open

Tool holds gas charged lift supports found on hoods, tailgates, hatchbacks and trunks. Clamp securely holds weak lift supports in the extended position to allow access to the engine compartment or luggage area. The aluminum body and brass threads prevent damage to the lift support. Colourful flag serves as a reminder to remove the clamp.

PART NO. 44870

## HOOD (BONNET) PROP

## Works on All Makes of Cars and Trucks

The three-piece, telescoping design allows the mechanic to hold the hood in the desired position. The tool telescopes from 18-1/2" (482.6mm - 1187.4mm) to 46-3/4". Can be used from the side of car for better access to the engine compartment. Also great for body or repair work on door, trunk lids or hatchbacks.

PART NO. 45900

## SMALL MASTER CHUCK KEY

- Has 4 sizes.
- Strong neodymium magnets for attachment close to the worksite or toolbox. Cast from alloy steel for strength

PART NO. 12050

## LARGE MASTER CHUCK KEY

PART NO. 12060

## GENERAL



### "O" RING AND SEAL PICK

**Quickly Removes & Installs "O" Rings & Seals**  
Tips are angled for hard-to-reach areas typically found around brakes, air conditioning and transmissions. Tips are hardened to stay sharp. Handle is knurled for a sure grip.

PART NO. 31840

### SCRIBE

**For Marking Metal & Softer Material Surfaces**  
Comes with straight and 90° points to mark in even the tightest places. Heat-treated carbon steel points provide durability. Knurled aluminum handle provides a sure grip.

PART NO. 31800

### AUTOMATIC CENTER PUNCH

#### Automatic Firing Action

Automatic action fires to create a dimple when downward pressure is applied. No hammer is needed. Works on metal, plastic, wood and other materials. Pressure can be varied by turning the knurled knob. Length 5-1/2" (139.7mm).

PART NO. 30280



### TAP SOCKET SET

#### For Use in Restricted Areas

Ideal for use in areas where a T-handle won't fit. Set of 8 sockets fits all number and fractional M.C.T.I. standard taps thru 1/2". Also fits 1/8" NPT taps and metric taps thru 12mm manufactured to M.C.T.I. standards. Convenient vinyl holder. All sockets are available individually.

PART NO. 70500



### ALUMINIUM VICE JAW PADS

#### Ideal for Holding Round and Hex Parts Securely

V-shaped aluminum surface holds and helps protect round or hex parts. Specially designed ledge supports flat parts while clamping. Strong nitrile magnets will attach to any steel vise jaws. Pad length is 4".

PART NO. 48000

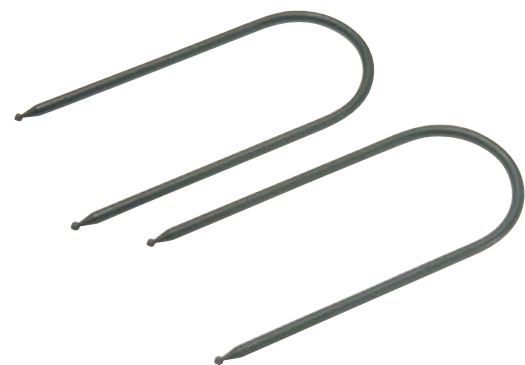


### TAP SOCKET SET

#### Three Larger Sizes in a Convenient Set

The three largest tap sockets, also available individually, are now packaged in a three piece set. Ideal for use where a T-handle won't fit, especially in restricted areas. For larger, fractional M.C.T.I. standard taps. #9 socket is 5/8" (16mm), #10 is for 11/16" (18mm) and #11 is for 3/4". Convenient vinyl holder. All sockets are available individually.

PART NO. 70940



### RADIO REMOVER

#### Disengages Retaining Clips on Fords and Imports

Tool quickly releases retaining clips on radios. Also works on some Saab, VW, Audi, and other import applications. Allows easy removal without damage. Set of two tools also serves as handles for removing the radio from the panel. Tools lock securely into clips on side of radio. Also works on some DIN mountings found on import vehicles.

PART NO. 11770



## MAGNETIC PICK-UP TOOLS

**Will retrieve parts and tools from hard to reach places**

Magnet shielded to concentrate magnetic field at end of tool.

31000 and 66500 have a super strong neodymium magnet.

31000 extends from 14-1/2" to 23-1/4". 66500 telescopes from 4-1/2" to 16-1/4".



Part No. 31000

31000

Extends from 14-1/2" to 23-1/4"  
(368.3 - 590.5mm)

PART NO. 31000

## TELESCOPING MAGNETIC POCKET PICK-UP

66500

Extends from 4-1/2" to 16-1/4"  
(114.3 - 412.7mm)

PART NO. 66500



Part No. 66500

## TELESCOPING MIRROR

**Enables you to see around corners**

2 1/4" (63.5mm) diameter mirror swivels to any position.

Length extends from 10" to 14" (254 - 355mm).

Has an insulated vinyl grip.



PART NO. 32050L

## LIGHTING



## FLEXIBLE FLASHLIGHT

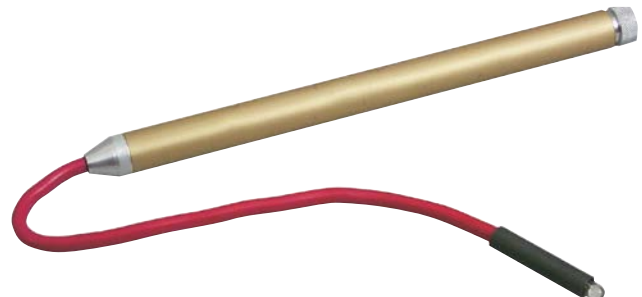
**Shines where other lights can't!**

Flexible wire holds the shape you give it. Focused high intensity bulb (only 1/4" in diameter) fits into the tight spots. Uses 2 AA batteries, not included.

PART NO. 32250

32310

Wire &amp; Bulb Assembly



## LED FLEXIBLE FLASHLIGHT

**LED Bulb lasts for up to 100,000 Hours**

Flexible wire works around obstructions and holds the shape you give it. White light brightly illuminates even the tightest work areas. Uses 3 AAA batteries not included.

PART NO. 35900

## LUBRICATION & TYRE



### WHEEL STUD PILOT PIN SET

**Easily Remove and Install Wheels on Many European Vehicles with Lug Bolts**

Three pairs of metric threaded wheel stud pilot pins allow you to hang the wheel without having to balance the wheel on the small lip of the hub. This helps prevent the wheel from falling and causing damage or injury. Set includes 12mm x 1.5, 14mm x 1.25 and 14mm x 1.5 threaded pins.

**PART NO. 13950**



### AXLE NUT SOCKET

**29MM**

Durable, impact-grade material. Deep to fit over variable axle lengths. Works where standard sockets won't. Use 1/2" drive.

40010 fits some GM and Ford 29mm 6pt applications.

**PART NO. 40010**



### AXLE NUT SOCKET

**35MM**

Durable, impact-grade material. Deep to fit over variable axle lengths. Works where standard sockets won't. Use 1/2" drive.

40020 fits some Mazda and Subaru 35mm 6pt applications.

**PART NO. 40020**

### NO SPLATTER PAD - 15" (381MM)

**15" Diameter Pad Protects Floors & Work Area from Messy Oil Splatter**

Insert 15" diameter pad in funnel or oil pan before oil change, to eliminate oil splatter. Porous material allows fluid to quickly pass through into funnel or pan. Pad material resists engine oil, transmission fluid, coolant, brake fluid, brake cleaner, gear oil and other solvents. 15" fits all standard oil lift drain funnels and oil pans. Pad can be trimmed for perfect fit. Important: Not for coolants or fluids that will be recycled in the vehicle. Material fibers may contaminate the fluid.

**PART NO. 38750**

### NO SPLATTER PAD - 22" (559MM)

**PART NO. 38780**



**Part No. 38750**



**Part No. 38780**



### THREADED OIL/TRANSMISSION FUNNEL

**Hands-Free filling on Threaded valve cover openings**

Two-piece design can be used separately or threaded together for a long super funnel. The larger section screws into threaded oil filler openings, found on many Ford, Dodge, Jeep & Chrysler cars, mini vans & SUVs. This holds the funnel upright for quick, mess free oil fills. Also works on some Honda and Nissan vehicles. The diameter of the smaller funnel is narrow enough to fit even the smallest applications including transmission filler holes

**PART NO. 19802**



### CATCH-ALL DRIP PAN

Ideal for use on showroom floors, garages, carports, or under equipment. Made of durable polyethylene material to assure longevity and flexibility. Holds 8 quarts. Dimensions are 24" x 36" x 1-1/2" (610 x 914 x 38mm).

**PART NO. 19722**

## LUBRICATION &amp; TYRE

## 4.5 GAL. PAN - BLACK 15 LITRE

PART NO. 17942

**Now with Built-in Ribs for Draining Filters in the Pan**  
For easy transfer of liquids. High-density polyethylene material is resistant to chemicals and solvents, and is easy to clean. 1" wide diameter spout for quick and easy pouring. The anti-splash lip and baffles help prevent spilling when carrying or pouring. Comes with large, easy-grip handles. Two colors: 17942 is black for oil and 17952 is green for anti-freeze



## 4.5 GAL. PAN - GREEN 15 LITRE

PART NO. 17952



## 6 QUART DRAIN PAN (5.5 LITRE)

Plastic drain pan with pour spout. The pan is 4" deep, 14" wide to the spout.

PART NO. 17932



## RIGHT ANGLE FUNNEL

**10" (254mm) Tall Translucent Funnel with a 6-3/4" (171mm) Offset from Centre of Mouth to Centre of Spout for Hard-to-Reach Applications**

Useful for adding brake fluid to master cylinders on mini-vans, adding gear lube to differentials, filling the DEF reservoir on GM Duramax diesels as well as other applications. The funnel mouth is 3.5" (89mm) O.D. and the spout is .7" (178mm) O.D.

PART NO. 17232



## 8 GALLON OIL LIFT DRAIN (22.7 LITRE)

## Quick Release Height Adjustment

This specially shaped, translucent jug holds 8 gallons (22.7L). Reinforced base will not warp with hot oil. Has a wide working range from 36 1/2" to 74" (927 - 1880mm). Its lower center of gravity increases stability and four 2 1/2" (63.5mm) ball bearing wheels swivel and roll easily. Also has a heavy-duty adjustment clamp, large handle and big pour spout with threaded cap. Large 15" (381mm) funnel has strainer built-in to catch drain plugs. Base of funnel is 1 3/4" (44mm) wide.

PART NO. 11102

## TRUCK &amp; TRAILER WHEEL PAN

**Catches Oil from Wheel Hubs after Removing Cap**  
Prevents oil mess during wheel repair. The pan fits rims with 13-3/4" (349.3mm) ID and larger. Handle compartments hold hub nuts out of the oil. Made of polypropylene for durability. Will not warp if oil is warm. Capacity 88 ounces (2.6 Litres).

PART NO. 19852



## VALVE CORE TOOL

## Removes and installs valve cores &amp; valve core caps

The double ended core driver reverses in the tool body. The reversible driver fits both large & small valve cores. Use the reverse end to remove and install valve core caps. The long tool handle will access inside dual wheels. The lightweight aluminum body is equipped with a pocket clip

PART NO. 14100



## TYRE DEFLATOR SET

**Quickly evacuates air from tyres without removing valve core**

Simply replace a standard sized valve cap with this handy tool and the special design will depress the pin in the valve core. Large openings on the sides of the tool allow air to escape quickly from the tire. Tools are marked so tyres can be returned to their original position on the vehicle so TPMS will not need to be reset. Also saves time since the valve core has not been removed from the sensor.

PART NO. 19860

## 6 QUART OIL DISPENSER (5.5 LITRE)

Translucent (see through) polyethylene material enables the user to read the liquid level on the container. Marked in both quarts and liters. The flexible 8" (203mm) pouring spout enables easy transfer of liquid

PART NO. 19732



## VALVE CORE TOOL

**Heat-Treated steel tip for removing and installing standard valve cores**

A dual durometer handle for comfort with a rotating knob on the end allowing the tool to turn smoothly while applying pressure with the palm of your hand. The 5.7" (145mm) long tool can reach valve stems on the inner dual wheels. Includes a handy pocket clip.

PART NO. 15190



## 1 QUART SPRAY BOTTLE (0.94 LITRE)

Industrial sprayer for use with light oils, solvents, and detergents. The durable polyethylene bottle is impervious to high and low temperatures. The trigger mechanism is resistant to damage caused by caustic materials

PART NO. 19772

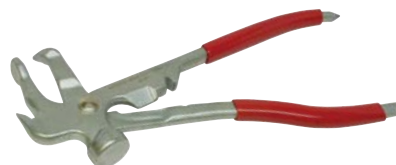


## WHEEL WEIGHT TOOL

**Removes, Trims and Installs Clip-on Wheel Weights**

Tyre lever and offset flat tip for removing wheel covers. Use hammer head to pound on wheel weights. Pliers action grabs weights for removal. Also cuts weights. Sturdy vinyl grips provide a good grip.

PART NO. 68130





CREEPER



LOW PROFILE SEAT CREEPER

**Features an Adjustable Cushioned Backrest**  
The legs and wheels can be flipped over for a 5" (127mm) or 8" (203mm) working height at the top of the seat cushion. The seat creeper assembly is 30" (762mm) wide by 13" (330mm) deep with 1" (25.4mm) of ground clearance. The backrest has a 3" (76.2mm) adjustment range with a quick-release pin, or can be removed when used as a knee creeper. Two locking wheels for extra stability when needed.

PART NO. 93502

CREEPER SEAT / STEP

**Ergonomic design with a 300 Lb. capacity that can be rotated forward onto rubber feet to make a stable 14" (355mm) tall step**  
Spacious storage tray below the seat keeps tools, test equipment and parts within easy reach. Perfect for brake and tire service, body work, etc. Wheels pop into tubular steel legs with an outrigger design for added stability.

PART NO. 93402



LARGE WHEEL PLASTIC CREEPER

**Bigger Wheels for a Better Ride**  
Our popular plastic creepers are now available with larger, 4" (101.6mm) pop-in urethane wheels. The larger wheels provide a much smoother ride on cracked or uneven floor surfaces, over floor debris and under heavy loads. Also rolls better on regular floor surfaces.  
The creeper body is the same as our low profile plastic creeper models 92102, 93102 and 94102.

Part No. 92032	Red Plastic Creeper
Part No. 93032	Yellow Plastic Creeper
Part No. 94032	Blue Plastic Creeper
Replacement Parts:	
96412	Headrest
96572	Castor (Single)

## CREEPERS



## LOW PROFILE PLASTIC CREEPERS

**Built for Strength & Comfort**

This body-fitting design was developed through testing on many body types to provide optimum comfort. Creeper body is 2" (50.8mm) longer for a better fit. Urethane rollers are inserted into steel bushings which are moulded into the creeper body. Provides added strength and easy roller replacement. Low profile, 7/8" (22.2mm) floor clearance. Easy to clean surface is resistant to solvents, greases and fuels. Dimensions: Length 38" (965mm), Width 17-1/2" (445mm), Height 4" (102mm).

Part No. 92102	Red Plastic Creeper
----------------	---------------------

Part No. 93102	Yellow Plastic Creeper
----------------	------------------------

Part No. 94102	Blue Plastic Creeper
----------------	----------------------

Part No. 97102	Black Plastic Creeper
----------------	-----------------------

**Replacement Parts:**

96412	Headrest
92132	Castor (Single)

## 42" (1067MM) PADDED LOW PROFILE STEEL CREEPER

145KG

A fully padded creeper on a 42" (1067mm) tubular steel frame. Pad is made of heavy-duty vinyl and offers maximum comfort. Comes with four 2" (51mm) ball bearing wheels. 80lb (36.3Kg) casters. 17" (432mm) wide, Padded Board is 12" (305mm) wide.

PART NO. 96302



## FOLD UP CREEPER

**The Padded Vinyl Creeper Adds Comfort and Protection on the Job**

Works great on off road situations and under a vehicle where no jacks or lifts are used. Folds up and hangs for convenient storage. Dimensions: 1220mm x 460mm

PART NO. 95002



## FENDER PROTECTOR

**Durable, Heavy Duty**

Heavy, long wearing foam vinyl protects the car and provides a convenient place for holding small tools and parts.

PART NO. 24750

